



# Marcon International, Inc. NEWSLETTER

## Winter 2005

Phone: (360) 678-8880  
Fax: (360) 678-8890

Website: [www.marcon.com](http://www.marcon.com)  
Email: [info@marcon.com](mailto:info@marcon.com)

**\$20.00 U.S., Canada & Mexico: One Year**  
**\$25.00 Other Countries: One Year**

Past Newsletters  
available in .pdf  
format at  
[www.marcon.com](http://www.marcon.com)

Tugboats	2-4
Push Boats	4
Deck Barges	5-6
Derrick Barges	6
Tank Barges	6-7
Misc. Barges	7
Hopper Barges	7-8
Supply Boats	8-9
Utility Boats	9
Crew Boats	9-10
Landing Crafts	10
Research, Dive	10-11

For more extensive list-  
ings of Vessels and  
Barges, including pho-  
tos, surveys, drawings,  
etc., check our website  
at [www.marcon.com](http://www.marcon.com)

**Complete article at [www.marcon.com](http://www.marcon.com)**

### Best of "This Week In Petroleum" for 2004

U.S. Energy Information Administration

The year 2004 may be characterized as a year of extremes, which witnessed record prices for crude oil and gasoline, a severe hurricane season, and world energy markets that were roiled by unexpectedly high oil demand in China and continued volatility in the Middle East. West Texas Intermediate (WTI) crude oil prices for the near-term futures contract on the New York Mercantile Exchange, the benchmark crude oil for the United States, soared and closed at an all-time record of more than \$55/bbl on October 22, a level about two-thirds above the \$33.78/bbl price of crude oil at the beginning of the year. Since the October peak, WTI crude oil prices have fluctuated downward to about \$42/bbl as of December 28, 2004.

Although the record high crude oil price this year can be attributed to a number of factors, the most influential of those were: low U.S. crude oil inventories held in commercial storage, particularly during the early months of the year; uncertainty about the flow of Iraqi oil exports in the face of the high level of turmoil within that country; the damage inflicted on Gulf Coast and offshore oil installations following hurricanes "Charley", "Frances", and "Ivan"; unexpectedly strong world oil demand, particularly in China; and capacity constraints (upstream, downstream, and transportation). Moreover, Venezuelan political instability, Nigerian labor strikes, and internal strife between the Russian government and oil giant Yukos also contributed to keep crude oil and other petroleum prices higher this year.

Rising crude oil prices also pushed most petroleum product prices higher during 2004, including retail regular gasoline which set a record U. S. average of 206.4 cents per gallon (unadjusted for inflation) on May 24th. The U.S. average regular gasoline price ended 2004 about 19% higher than at the beginning of the year, rising from 151.0 cents/gallon in early January to 179.1 cents/gallon by December 27, 2004. Another noteworthy item during 2004 was record distillate fuel demand, which, spurred by nearly unprecedented demand for on-highway diesel fuel, measured nearly 4.1 million bbl/day. Even high diesel fuel

#### Featured Vessels



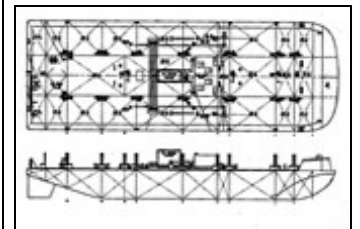
DB30013  
Deck Barge



TG57004  
Twin Screw Tug



RV26660  
Seismic Vessel



TB53000  
Ocean Tank Barge

(Continued on page 11)



## Vessels for Sale and Charter Tug Boats

File	Dimensions	Machinery	HP	Built	Price
> TG01047	48x11x-	1xSKL	100	66	Request
+ TG01118	18x-x-	1xGM4-71	115	-	8,750
★ TG01626	27x11x-	1xGM6-71	165	-	15,000
+ TG01632	36x11x4	1xGM6-71	165	58	60,000
★ TG02245	45x13x7	1xGM8V71	220	55	Request
★ TG02327	28x10x-	1xGM8V71	230	-	58,000
+ TG02334	34x-x-	1xGM8V71	230	-	Request
> TG03055	56x12x-	2xMWM	350	52	Request
> TG03065	65x15x7	1xB&W	300	K 67	Request
+ TG03357	52x14x6	2xGM6-71	330	51	47,500
> TG03358	58x18x-	1xLister	330	T 72	185,000
+ TG03525	25x10x-	1xGM6-71	165	55	50,000
> TG03635	35x10x-	1xCATD343	365	-	39,000
+ TG04007	42x14x7	1xMurphy	350	K 86	80,000
★ TG04042	42x13x8	2xGM6-71	330	57	52,500
+ TG04243	43x14x6	1xCATD353	425	65	65,000
+ TG05015	53x20x8	2xGM8V71	480	K 73	305,000
★ TG05135	35x14x5	2xCummins	510	02	185,000
> TG06367	68x22x-	1xBergen	630	68	165,000
+ TG07021	68x18x10	1xCAT348	725	45	80,000
	TG07060	2xGM12V71	680	56	475,000
+ TG07066	65x22x6	4xGM6-71	660	42	65,000
> TG07068	58x20x9	2xCAT3406	700	92	Request
> TG07072	66x20x9	2xCummins	700	K 03	Request
+ TG07085	85x32x10	1x Enterprise	700	44	75,000
	TG07255	2xGM12V71	680	72	475,000
+ TG07654	64x20x9	2xCAT3406	760	K 93	210,000
	TG07655	2xCAT3406	760	81	Request
> TG07661	61x17x8	2xGM12V71	680	44	170,000
> TG08014	61x17x8	2xGM8V71	460	43	170,000
+ TG08040	63x17x-	1xCAT3412	765	46	Request
+ TG08055	55x19x6	2xCummins	800	57	400,000
> TG08060	60x19x8	2xGM12V71	680	81	Request
> TG08064	60x19x8	2xCummins	800	81	Request
★ TG08065	65x23x9	2xCAT353	850	69	400,000
> TG08073	66x20x8	2xGM12V71	680	59	Request
> TG08079	78x22x12	1xCummins	800	K 93	525,000
> TG08451	52x19x-	2xGM12V71	680	77	Request
> TG08664	64x20x9	2xCAT3406	860	K 95	275,000
> TG09052	53x20x9	2xIveco	900	K 04	Request
+ TG09060	60x22x-	2xCummins	900	72	400,000
+ TG09063	65x17x9	1xCAT	925	K 41	50,000
> TG09074	72x26x11	2xCummins	940	97	Request
> TG09086	85x20x10	1xB&W	880	56	105,000
> TG09472	72x23x10	2xCummins	940	96	180,000

Listings Updated Daily On Internet

File	Dimensions	Machinery	HP	Built	Price
> TG10014	80x20x10	1xGM16V149	1000	45	280,000
> TG10067	65x18x-	2xGM12V71T	1000	41	Request
> TG10073	70x25x10	2x-	1000	95	385,000
> TG10091	75x22x11	2xCummins	1020	01	Request
> TG10094	75x22x11	2xCummins	1100	K 03	Request
> TG10105	75x22x11	2xCummins	1000	K 02	Request
★ TG10107	101x24x14	2xGM6278A	1000	45	200,000
+ TG10118	100x25x11	1xCATD399	1125	45	Request
> TG10272	72x20x10	2xVolvo	1020	K 00	Request
> TG10892	93x23x13	1xMWM	1080	56	170,000
> TG11001	70x20x9	1xCAT3512	1075	63	Request
> TG11058	57x20x7	1xCAT3412	1100	01	350,000
> TG11080	80x20x8	1xGM16V149	900	44	280,000
> TG11088	77x25x10	2xYanmar	1100	K 96	460,000
> TG11091	78x21x10	2xVolvo	1100	02	425,000
> TG11384	79x25x-	2xMirrlees	1130	83	Request
> TG11691	91x24x13	1xMWM	1160	71	157,000
+ TG12000	91x25x10	1xCATD399	1125	42	Offer
> TG12063	69x22x9	2xCATD397	1000	56	Request
+ TG12069	75x24x7	2xGM16V92	1200	80	625,000
> TG12112	77x24x11	2xCummins	1200	00	475,000
	TG12118	2xGM16V92	1200	77	900,000
> TG12129	65x22x11	2xCAT3412	1200	K 75	630,000
★ TG12132	95x27x14	1xGM12278	1200	39	150,000
> TG12134	88x25x9	2xRuston	1200	T 67	Request
> TG12138	106x26x13	1xMWM	1200	60	Request
> TG12477	77x24x11	2xYanmar	1240	04	Request
> TG12878	78x25x12	2xYanmar	1280	K 02	Request
> TG13071	71x22x12	1xWichmann	1320	17	Request
> TG13084	84x25x13	1xDeutz	1320	K 64	235,000
> TG13087	85x25x12	1xDeutz	1320	K 69	390,000
> TG13109	107x27x15	1xMWM	1365	52	130,000
+ TG13116	125x24x11	2xCAT3412	1250	26	80,000
> TG13200	84x25x-	1xDeutz	1320	T 70	Request
> TG13673	74x22x-	1xDeutz	1362	K 70	Request
+ TG14076	75x23x12	2xCATD398	1500	63	Request
	TG14081	2xGM12V149	1400	71	630,000
	TG14086	2xGM12V149	1400	K 84	Request
+ TG15002	87x24x13	1xEMD12645	1500	K 43	Offer
	TG15075	3xCAT3406	1500	03	Request
	TG15089	1xEMD12645	1500	56	Request
+ TG15093	93x24x13	1xEMD12645	1500	K 57	205,000
> TG15102	98x28x13	1xFairbanks	1200	K 63	Request
	TG15110	1xEMD12645	1500	59	200,000
> TG16106	96x27x14	2xRusski	1600	K 92	625,000
> TG16114	101x26x16	1xGM12278	1600	61	Request
+ TG16573	75x24x10	2xCummins	1850	78	Request
> TG16575	75x25x10	2xBaudouin	1650	72	Request
> TG16597	98x28x14	1xFairbanks	1650	56	305,000
	TG17008	2xCATD398	1700	67	Request
+ TG17011	102x27x15	2xCAT3512	2400	44	Request
> TG17015	85x30x13	2xSACM	1840	Z 93	Request

K = Kort

Z = Azimuthing

Details believed correct, not guaranteed. Offered subject to prior sale or charter.



File	Dimensions	Machinery	HP	Built	Price
> TG17074	72x25x9	2xCATD398	1700	80	Request
> TG17090	85x26x13	2xCummins	1700	01	Request
> TG17099	85x30x13	2xSACM	1989	Z 94	Request
> TG17115	106x27x15	1xCAT3516	1200	56	Request
> TG18003	78x24x11	2xGM16V149	1800	78	Request
> TG18018	108x30x-	2xDeutz	1800	T 68	Request
> TG18066	67x21x10	1xNiigata	1800	93	Request
TG18086	80x30x12	3xCAT3412	1800	02	Request
★ TG18105	100x27x11	1xEMD16567	1800	65	250,000
★ TG18108	103x27x13	1xFairbanks	1800	57	100,000
★ TG18113	100x25x14	1xFairbanks	1800	08	105,000
> TG18115	96x26x-	2xRuston	1800	57	Request
+ TG18877	77x26x10	2xCummins	1880	81	Request
> TG19060	60x23x10	2xCAT3508	1920	K 98	Request
> TG19063	60x23x10	2xCAT3508	1920	K 04	Request
+ TG19065	65x23x-	2xGM12V149	1350	K 77	Request
> TG19085	85x20x9	2xGM12V149	1880	99R	Request
TG19590	90x32x12	3xCAT3412	1950	K 03	Request
> TG20083	84x28x12	2xStork	2000	K 84	Request
> TG20088	85x28x14	2xCAT3508	2000	Z 99	Request
> TG20091	85x28x14	2xCAT3508	2000	Z 99	Request
> TG20099	90x28x13	2xMitsubishi	2000	03	Request
+ TG20109	108x29x16	1xFairbanks	2000	65	Request
TG20115	105x29x15	2xEMD8645	1950	74	Request
TG20128	110x25x14	1xFairbanks	2000	09	Request
> TG20130	85x26x12	2xStork	2000	K 84	750,000
> TG20131	95x28x13	2xCummins	2000	K 99	Request
> TG20137	95x30x14	2xWartsila	2000	98	Request
TG20146	101x25x13	1xEMD16645	1950	45	250,000
★ TG20148	110x26x13	1xFairbanks	2000	53	160,000
TG20150	118x26x14	1xEMD16645	1950	03	Request
+ TG21084	84x30x-	3xLugger	2200	97	Request
★ TG21097	97x27x11	1xEMD12645	2150	44	210,000
> TG21998	98x22x16	1xRuston	2190	K 72	Request
> TG22012	110x30x16	1xCrepelle	2200	75	605,000
+ TG22075	75x26x14	2xGM12V149	2200	78	650,000
> TG23075	75x24x12	2xCAT3508	2300	K 02	Request
TG24091	90x33x13	2xCAT3512	2400	Z 94	3,600,000
TG24093	90x33x13	2xCAT3502	2400	Z 94	3,600,000
> TG24117	94x28x13	2xCummins	2400	K -	Request
TG24125	105x27x10	2xEMD12645	2300	91R	160,000
★ TG24137	109x30x14	1xEMD16567	2400	60	80,000
★ TG24138	102x27x14	1xNohab	2400	57	210,000
> TG25097	93x28x12	2xDeutz	2320	T 77	Request
> TG25113	94x28x-	2xRuston	2580	T 80	Request
> TG25124	125x30x-	2xNiigata	2500	K 76	Request
> TG26001	108x32x16	1xRuston	2640	K 82	Request
> TG26008	117x30x15	2xYanmar	2600	K 77	Request
> TG26089	90x28x10	2xNiigata	2600	74	Request
> TG26096	97x32x14	2xWartsila	2700	Z 94	Request
TG26134	103x25x11	1xAlco	2600	52	500,000
> TG26135	124x30x15	1xRuston	2640	K 76	Request

K = Kort

T = Tractor

File	Dimensions	Machinery	HP	Built	Price
★ TG26141	100x25x11	1xPolar	2600	57	265,000
> TG26144	104x28x12	2xYanmar	2600	Z 78	370,000
+ TG27001	106x29x15	2xCAT3512	3000	67	Request
> TG27088	89x28x12	2xCAT3512	2700	92	1,650,000
> TG27107	105x30x12	2xStork	2680	Z 81	Request
> TG27295	95x29x16	1xBergen	2727	94	Request
> TG28105	104x32x16	2xMAK	2800	70	Request
TG28112	103x25x11	1xAlco	2800	56	300,000
> TG28129	128x33x16	2xRuston	2800	67	Request
> TG29088	89x30x14	2xWartsila	2920	Z 81	Request
> TG29119	108x33x15	2xMAN	2940	T 83	Request
+ TG30024	107x30x14	2xEMD12645	3000	K 63	Request
> TG30031	105x30x14	1xB&W	3180	K 81	Request
> TG30032	111x31x-	2xStork	2800	T 69	Request
★ TG30096	95x24x-	1xAlco	3560	40	185,000
TG30104	105x34x17	2xEMD12645	3000	81	Request
TG30113	105x28x12	2xEMD12645	3000	66	Request
TG30122	122x31x12	2xEMD12645	3000	K 68	Request
+ TG30123	101x28x16	2xEMD12645	3000	K -R	Request
TG30125	125x34x16	2xEMD12645	3000	69	1,875,000
> TG30135	113x31x13	2xNippon	3000	K 71	Request
TG30153	115x33x17	2xEMD12645	3000	69	Request
> TG30159	157x35x16	2xYanmar	3000	90	Request
TG30179	103x27x12	1xGE	3000	52	400,000
> TG30185	106x28x12	2xNiigata	3000	Z 84	Request
> TG30187	113x30x13	1xDeutz	3000	K 74	Request
> TG31110	110x32x16	1xCrepelle	3100	K 80	Request
> TG31597	97x28x-	1xRuston	3150	K 80	Request
> TG32095	88x26x13	2xCummins	3200	K 03	3,450,000
> TG32105	100x32x14	2xStork	3200	94	Request
> TG32124	120x30x13	2xDaihatsu	3400	Z 84	1,250,000
> TG32131	131x37x16	2xYanmar	3200	K 04	Request
> TG32134	135x36x16	2xYanmar	3200	K 82	Request
> TG32136	105x-x-	2xFuji	3200	K 75	Request
> TG32138	98x35x15	2xCummins	3200	03	Request
> TG32160	159x40x15	2xYanmar	3200	K 82	Request
> TG33001	120x33x-	2xRuston	3380	69	Request
> TG33101	100x32x14	2xDeutz	3350	Z 04	Request
> TG33105	105x34x18	2xCAT3516	3300	Z New	Quote
TG33120	120x34x16	2xWichmann	3300	K 83	2,750,000
> TG33130	130x31x15	2xFuji	3300	76	Request
> TG34118	100x32x14	2xCAT3516	3400	Z New	Quote
> TG35085	86x26x13	2xCAT3512	3500	K 02	Request
> TG35121	116x30x14	2xFuji	3500	89	Request
> TG36088	89x32x15	2xYanmar	3600	Z 04	Request
> TG36096	98x32x18	2xCAT3516	4000	Z 94	3,500,000
★ TG36110	110x26x-	2xFairbanks	3600	49	400,000
★ TG36125	125x32x11	2xFairbanks	3200	67	500,000
> TG36126	118x32x14	2xNiigata	3600	Z 95	Request
> TG36134	108x31x-	2xMirrlees	3600	92	Request
> TG37106	106x30x-	1xWartsila	3700	K 84	Request
> TG38124	122x33x18	2xRuston	3800	K 78	Request

+ Located West Coast   ★ Located East Coast   > Foreign Flag



## Tug Boats Continued

File	Dimensions	Machinery	HP	Built	Price
> TG39115	115x33x15	2xWichmann	3600 K	77	Request
+ TG39132	132x32x15	2xEMD16645	3900	67	Request
> TG39133	133x34x16	1xMAN	3900	73	650,000
TG39143	143x33x16	2xEMD16567	3280	45	1,400,000
TG39150	152x33x19	2xEMD16645	3900	45	900,000
★ TG40086	90x41x16	3xCummins	4350 K	98	Request
TG40110	110x32x18	2xStork	3500 K	75	Request
> TG40156	97x31x-	2xYanmar	4000	95	Request
> TG40173	128x31x14	2xNiigata	4600	91	Request
TG40177	121x34x19	2xAlco	4000	74	Request
> TG42132	131x33x16	2xYanmar	4200	79	1,260,000
> TG42147	148x41x17	2xYanmar	4200 K	04	Request
TG43121	124x32x19	2xEMD12645	4300	67	3,200,000
> TG44102	98x32x18	2xCAT3516	4400 Z	02	Request
> TG44117	98x35x16	2xCummins	4400	-	Request
> TG44120	120x33x19	2xAlco	4400 K	76	Request
> TG44121	120x37x18	2xWartsila	4400 K	05	Request
★ TG44122	122x34x18	2xFairbanks	4400	70	Request
> TG44127	128x35x16	2xCummins	4400 K	-	Request
> TG44137	138x55x17	1xCockerill	4400	77	Request
TG46123	124x35x19	2xWartsila	5000 K	74	3,750,000
> TG49098	98x36x17	2xDeutz	4900 Z	New	Request
> TG49124	125x36x16	2xCAT3516	4960 K	New	Quote
TG51090	90x41x16	3xCummins	5100 K	02	Request
> TG54092	92x38x17	3xNiigata	5430 Z	05	Request
> TG54105	106x38x17	2x-	5500 Z	05	Request
> TG55163	163x45x19	2x-	5500 K	05	Request
> TG55164	163x45x19	2x-	5500 K	05	Request
> TG56148	148x23x20	2xBergen	5600 K	73	Request
> TG56154	155x36x22	2xNohab	5600 Z	70	Request
TG57004	135x38x20	2xEMD16645	5750 K	74	Request
TG57007	145x35x17	2xEMD16645	5750	68	Request
> TG57142	126x36x19	2xEMD16645	5750 K	78	Request
TG60110	110x41x16	3xWartsila	5100 K	87	Request
> TG63103	104x39x18	3xCAT3516	6300	New	Quote
> TG69239	234x59x30	2xRusski	7000	83	Request
TG70136	135x38x20	2xEMD20645	8000 K	00R	Request
> TG70144	144x38x20	2xNohab	7072 K	75	1,050,000
> TG70153	154x38x21	2xMirrlees	7200 K	75	Request
> TG72009	150x39x20	2xEMD20645	7200 K	-	Request
TG72149	150x40x24	2xEMD20645	7200 K	76	Request
> TG74148	148x42x20	2xAlco	7460 K	-	Request
> TG80150	151x43x-	2xPielstick	8000 K	78	Request
> TG80152	149x35x16	2xMAK	8000 K	75	Request
> TG80214	238x43x20	2xNiigata	8000 K	77	Request
> TG90214	237x43x20	2xHanshin	9000 K	76	Request
> TG99001	181x49x17	2xFuji	8440	77	Request
> TG99013	219x43x21	2xEMD20645	7200	78	Charter
TG99999	157x53x-	1xMAN	15200	81	Request

Listings Updated Daily On Internet

## Push Boats

File	Dimensions	Machinery	HP	Built	Price
TP02051	50x18x5	1xGM6-71	165	53	42,500
TP03045	45x15x4	1xGM6110	245	62	105,000
TP03065	65x20x4	1xGM1271	340	79	76,000
★ TP03233	34x14x5	2xCummins	320	81	47,500
> TP03368	69x28x5	-	330	87	75,000
TP03550	50x17x5	2xGM6-71	330	58	Request
TP04036	36x15x4	1xGM12V71	340	72	60,000
TP04042	40x20x6	2xCAT3208	420	-	Request
TP04144	44x15x6	2xGM6-71	330 K	95	Request
+ TP05000	60x20x5	2xGM8V71	460	68	100,000
★ TP05014	40x14x4	2xGM8V71	460	-	89,500
+ TP05026	56x17x6	2xGM8V71	460	70	175,000
+ TP05042	42x12x4	2xCAT	500	57	70,000
★ TP05043	44x16x7	2xGM8V71	460	-	290,000
TP06061	60x22x8	2xCAT3408	600	69	Offer
TP06088	88x20x-	1xAtlas	600	47	Offer
+ TP06845	45x17x6	2xGM12V71	680	94R	275,000
> TP07015	36x16x7	2xGM12V71	680	65	Request
★ TP07024	56x22x8	2xGM12V71	680	76	Request
★ TP07047	48x16x5	2xCAT3306	600	59	250,000
TP07062	60x20x7	2xGM12V71	680	67	330,000
TP07065	60x22x7	2xGM12V71	680	68	185,000
TP07066	55x19x6	2xGM12V71	680	58	Offer
+ TP07268	68x22x7	2xGM12V71	680	79	375,000
TP08040	40x16x6	2xJohn Deere	750	01	315,000
> TP08049	49x27x6	2xVolvo	800	65	Request
TP08056	55x19x7	2xGM12V71	800	67	195,000
> TP09049	49x31x5	2xGM	900	62	Request
TP09088	88x22x8	1xEMD	900	39	Offer
> TP10058	58x24x7	2xCATD346	960 K	71	265,000
TP10140	140x25x9	2xEMD12567	1080	28	Offer
+ TP11060	60x17x9	2xCAT3406	900	58	550,000
TP11140	140x25x9	2xEMD12567	1080	28	Request
TP12052	52x23x8	2xCummins	1200	New	Quote
★ TP14559	59x20x8	2xCATD348	1450	90	500,000
TP15114	114x30x8	3xCooper	1575	42	Request
TP16102	102x28x8	2xSuperior	1640	56	Request
TP16103	103x23x-	1xEMD16567	1600	41	Request
TP18005	72x30x10	2xCummins	1700	New	Quote
★ TP20143	143x29x9	2xEMD12567	2000	45	295,000
> TP22465	66x33x8	2xGM16V149	2400	74	230,000
TP28120	120x30x12	2xGM16278	2880	48	Request
TP30093	91x30x10	2xEMD12645	3000	73	890,000
TP32100	100x28x-	2xGM16278	3200	56	Request
> TP33114	115x42x9	2xDeutz	3300	-	300,000
> TP36114	115x43x7	3xMAK	3600	95R	Request
TP37150	150x35x9	2xAlco	3720	52	105,000
TP39132	132x34x11	2xEMD16645	3900	57	600,000
TP41130	130x40x-	3xEnterprise	4125	56	Request

+ Located West Coast   ★ Located East Coast   > Foreign Flag

Details believed correct, not guaranteed. Offered subject to prior sale or charter.



### Deck Barges

File	Dimensions	Remarks	Built	Price
+ DB01510	15x10x7	Sectional	-	Request
★ DB02007	20x7x4	Sectional	-	6,500
> DB02009	20x8x6	Sectional	-	Request
+ DB02014	20x10x7	Sectional	-	Request
> DB02024	20x8x8	Sectional	-	Request
★ DB02406	24x7x4	Sectional	-	6,500
+ DB03020	30x20x4	Inland	-	Request
★ DB03027	30x27x7	Sectional	-	21,500
> DB04008	40x8x4	Sectional	-	Request
+ DB04010	40x10x5	Sectional	-	Request
+ DB04011	40x10x7	Sectional	-	Request
> DB04014	40x8x6	Sectional	-	Request
> DB04022	40x8x8	Sectional	-	Request
DB05020	50x20x6	Inland	-	Request
+ DB05634	56x28x4	Inland	-	37,000
> DB05920	59x20x5	Inland	-	Request
> DB08000	80x26x6	Inland	-	Request
+ DB08020	80x20x4	Inland	-	30,000
> DB08233	82x33x7	Coastal	90	Request
+ DB08340	80x40x10	Inland Conveyor	52	Offer
★ DB09030	90x30x9	Inland	-	42,500
> DB09139	92x39x9	Inland Spud	-	160,000
★ DB10030	100x30x8	Inland Spud	-	52,500
DB10035	100x35x8	Inland	-	Request
+ DB10840	108x40x11	Inland	-	Request
DB11023	110x30x7	Inland	76	63,000
DB11026	110x26x6	Inland Spud	-	Request
DB11041	110x30x7	Inland - (3)	77	58,000
+ DB11047	110x54x11	Inland	45	140,000
★ DB11059	110x34x9	Inland	-	79,000
> DB11245	112x45x8	Inland Spud	67	275,000
> DB11748	117x49x8	Ocean	-	Request
★ DB12020	120x40x11	Inland	62	127,500
DB12030	120x30x7	Inland	-	Request
DB12032	120x30x7	Inland	78	63,000
> DB12048	120x44x-	Inland Spud	32	250,000
DB12063	120x30x7	Inland	97	Request
> DB12065	120x40x10	Ocean - (5)	-	Request
★ DB12081	120x40x11	Inland	62	Request
DB12088	120x30x7	Inland	-	42,000
★ DB12541	125x40x11	Inland	63	185,000
★ DB12833	128x34x9	Inland - (41)	-	42,500
> DB12941	129x42x9	Ocean	75	Request
★ DB13042	130x42x12	Inland	63	Request
> DB13134	131x34x11	Coastal	72	Request
> DB13503	135x35x-	Inland	-	137,500
DB13530	135x30x9	Inland	-	59,000
DB13550	135x50x11	Inland	62	175,000
+ DB14004	140x39x9	Ocean Ramp	79	675,000

File	Dimensions	Remarks	Built	Price
> DB14005	140x40x10	Ocean	81	265,000
DB14034	140x34x9	Inland	-	Request
★ DB14045	140x40x8	Inland	71	Request
★ DB14052	140x39x9	Inland	69	Request
★ DB15045	150x45x9	Inland	79	Request
+ DB15063	150x52x11	Inland	44	168,000
+ DB15236	152x36x14	Inland	43	90,000
> DB15449	154x49x11	Ocean	74	Request
DB16005	160x40x11	Ocean	68	265,000
DB16236	164x36x-	Ocean	82	Request
> DB16456	164x57x13	Ocean	94	760,000
> DB16553	165x44x12	Inland	59	125,000
> DB16654	167x54x11	Ocean	87	Request
+ DB17042	170x42x10	Inland	68	210,000
> DB17350	173x50x10	Ocean	97	187,500
DB17360	175x36x8	Inland	-	Request
> DB18007	180x50x10	Ocean	92	185,000
+ DB18050	180x50x12	Inland	74	185,000
+ DB18051	180x48x12	Inland	78	210,000
> DB18054	180x54x12	Ocean	72	400,000
> DB18069	180x50x12	Ocean	94	157,500
> DB18071	180x52x10	Inland	62	125,000
+ DB18078	180x45x10	Inland	74	90,000
> DB18079	180x50x10	Ocean	99	330,000
DB19536	195x35x11	Inland	-	Request
DB20042	200x42x10	Ocean	99	Request
> DB20043	200x43x-	Inland	-	157,500
> DB20080	200x80x16	Coastal	48	491,500
> DB20849	209x50x-	Ocean	74	Request
+ DB21057	210x54x13	Inland	61	Request
★ DB21338	213x39x9	Inland Spud	11	85,000
> DB21480	215x80x26	Ocean - (2)	74	Request
★ DB21542	215x42x15	Inland	45	132,500
> DB22043	230x43x15	Ocean	51	Request
★ DB22049	240x49x13	Inland	-	236,000
★ DB22052	220x54x14	Ocean	92	Request
★ DB22063	220x60x14	Ocean	98	Request
> DB22068	220x60x14	Ocean - (2)	00	Request
+ DB22356	223x55x12	Ocean Reefer	63	650,000
★ DB23043	230x43x15	Ocean	51	Request
> DB23061	230x60x14	Ocean	00	467,500
> DB23069	230x60x14	Ocean - (10)	01	Request
★ DB24005	240x72x16	Ocean	77	850,000
DB24050	240x50x10	Inland	-	Request
> DB24063	240x60x16	Ocean	New	Quote
> DB24068	240x60x16	Ocean	95	Request
> DB24078	240x72x17	Ocean	77	1,160,000
+ DB24262	242x60x16	Ocean	77	Request
DB24948	250x48x15	Ocean	48	Request
DB25027	250x100x16	Ocean	76	Request
> DB25028	250x72x15	Ocean	82	Request
DB25034	250x72x16	Ocean	81	Request

+ Located West Coast   ★ Located East Coast   > Foreign Flag



## Deck Barges Continued

File	Dimensions	Remarks	Built	Price
+ DB25050	250x50x13	Inland	60	200,000
★ DB25077	250x72x15	Ocean	81	1,200,000
> DB25097	250x80x16	Ocean - (2)	03	Request
> DB25105	250x70x17	Ocean	67	1,050,000
★ DB26012	260x64x12	Inland - (2)	90	525,000
+ DB26048	261x48x	Inland House	44	157,500
★ DB26860	268x60x19	Ocean	68	735,000
> DB27072	270x70x16	Ocean - (2)	00	Request
> DB28080	280x80x16	Ocean - (2)	03	Request
> DB28083	280x80x18	Ocean - (4)	03	Request
> DB28090	280x90x18	Ocean - (2)	03	Request
> DB28154	281x54x11	Ocean	82	Request
DB29051	290x50x12	Inland	-	290,000
DB29754	297x54x12	Inland	-	Request
+ DB29991	299x90x19	Ex-Ocean	82	210,000
DB30013	300x90x19	Ocean	82	2,500,000
> DB30026	300x90x20	Ocean	78	Request
> DB30034	300x90x20	Ocean	76	Request
> DB30080	300x80x18	Ocean	05	1,125,000
> DB30103	300x90x20	Ocean	94	Request
> DB30104	300x90x20	Ocean	84	Request
> DB30111	300x90x19	Ocean	76	Request
> DB30114	300x90x20	Ocean	77	Request
> DB30127	300x80x18	Ocean	96	Request
> DB30210	302x103x22	Ocean - (2)	00	Request
> DB32899	328x121x23	Ocean	75	Request
> DB32999	330x100x20	Ocean	04	Request
> DB33092	330x90x20	Ocean	New	Quote
> DB33654	337x54x9	Ocean - (2)	79	Request
> DB36096	387x76x24	Coastal	77	Request
★ DB37085	370x85x24	Ex-Ocean	70	Offer
> DB39301	394x131x25	Ocean	77	Request
> DB40012	400x10x25	Ex-Ocean	76	Request
+ DB40104	400x100x20	Ex-Ocean	70	Request
DB40108	400x100x20	Ex-Ocean	75	Request
+ DB43857	437x56x28	Inland	-	150,000
> DB44298	443x131x25	Ocean	04	Request

## Derrick Barges

File	Dimensions	Machinery	HP	Built	Price
DK06026	60x26x4	Inland	-	-	Request
DK06052	60x52x-	Inland Whirley	-	-	90,500
DK07036	70x35x5	Inland	-	-	Request
DK08045	80x45x7	Inland	-	-	Request
> DK08233	82x33x5	Inland Demag	-	60	Request
> DK08234	82x33x-	32T	-	60	Request
★ DK08546	85x46x6	Inland 40T	-	-	Request

Listings Updated Daily On Internet

File	Dimensions	Remarks	Built	Price
> DK09037	90x37x10	Inland	-	235,000
DK09232	92x32x6	Inland Dredge	71	600,000
★ DK10040	100x40x9	Inland Clyde 20T	62	285,000
★ DK10050	100x50x8	Inland Am.	-	710,000
> DK10952	109x53x14	Coastal 120T	-	455,000
> DK11234	112x34x9	Coastal	72	Request
> DK11961	119x61x10	32T	82	Request
+ DK12006	116x32x6	50T/Pedestal	-	Offer
★ DK12041	120x40x8	Inland Crane	-	Request
> DK12046	120x45x7	Inland Spud	84	236,500
> DK12052	120x50x10	Inland Spud	-	950,000
★ DK12262	122x62x10	Inland 60T	43	415,000
★ DK13034	130x34x6	Inland 18T	-	210,000
DK13527	135x27x-	Inland Spud	-	68,500
DK13528	135x27x-	Inland 50T	-	Request
DK13535	135x35x-	Inland 70T	-	Request
> DK13650	136x50x10	Inland 75T	64	460,000
DK14046	150x50x11	Ex-Ocean	80	Offer
+ DK14085	140x84x15	Inland 200T	17	370,000
> DK14090	140x90x10	Inland 150T	66	1,500,000
DK14736	143x36x11	Inland	21	225,000
> DK15046	150x45x9	Inland Spud	-	262,500
> DK15047	150x45x8	Inland Spud	78	262,500
DK15075	150x74x10	200T "A"	79	1,575,000
★ DK15139	151x39x11	Inland	-	37,500
> DK15368	153x69x13	Propelled 140T	87	2,200,000
DK15552	155x51x11	Inland 90T	43	275,000
> DK15850	158x50x12	Ocean	99	385,000
> DK16257	162x57x11	Propelled 150T	80	Request
> DK16475	164x75x14	Sheerleg 300T	74	Request
> DK16540	165x40x9	Inland Spud	43	200,000
DK16542	165x47x12	100T	27	800,000
> DK16745	167x46x-	Coastal	93	Request
> DK17059	170x59x10	150T Crane	94	Request
> DK18049	180x50x10	150T Crawler	88	Request
> DK18055	180x54x12	Inland Spud	81	367,500
> DK18362	184x62x-	150T Crawler	75	Request
DK19535	195x35x11	Inland	76	Request
> DK24668	246x69x16	Ocean 100T	80	Request
★ DK25060	250x60x16	Inland Spud	62	500,000
> DK31562	315x62x-	350T Sheer	75	Request

## Tank Barges

File	Dimensions	Machinery	HP	Built	Price
★ TB00001	57x8x-	-	Inland	-	21,500
★ TB00357	46x20x6	357	Inland	-	21,500
★ TB00857	70x19x8	857	Inland	52	21,500
+ TB01008	86x20x7	-	Inland	48	39,500
> TB01106	66x24x6	1190	Inland	-	Request
> TB01325	98x25x6	1325	Propelled	77	180,000

Details believed correct, not guaranteed. Offered subject to prior sale or charter.



## Tank Barges Continued

File	Dimensions	BBL	Remarks	Built	Price
TB02094	94x28x6	2000	Inland	-	69,000
TB04514	140x30x7	4500	Inland	61	69,000
> TB07012	126x37x12	7660	Inland	67	Request
> TB07014	148x60x-	7850	Ocean	87	540,000
TB07140	140x35x10	7000	Ex-Ocean	66	132,500
TB08000	97x54x10	8000	Inland	-	95,000
> TB08012	127x32x15	-	Propelled	89	Request
TB08297	97x54x10	8260	Inland	72	105,000
TB08400	195x35x12	8400	Inland	70	160,000
TB10012	125x50x12	10000	Inland	59	Offer
TB10028	195x35x12	10528	Inland	71	Request
> TB12015	220x48x13	13043	Coastal	-	427,000
TB12020	205x35x14	-	Inland	52	Offer
TB12023	235x40x12	-	Inland	53	315,000
TB12024	235x40x12	-	Inland	-	370,000
TB13014	148x54x12	13388	Inland Dbl - (4)	-	Request
TB14019	195x50x14	14351	Inland	59	157,500
> TB14022	190x50x14	-	Ocean - (3)	01	Request
TB17016	147x54x14	16947	Inland	75	142,500
TB17018	155x54x12	17030	Inland	75	Request
TB18023	225x54x13	18500	Inland	75	395,000
TB18029	297x54x13	18000	Inland - (3)	69	210,000
TB18030	298x54x14	18000	Inland	69	315,000
> TB19040	401x38x16	19172	Terminal	01	Request
TB20037	290x54x11	20607	Inland	70	340,000
TB21031	290x50x11	21494	Inland	65	265,000
> TB22003	264x54x12	22000	Inland	79	Request
TB22025	250x50x12	22286	Inland	80	Request
> TB25033	230x60x16	22216	Ocean	01	Request
TB26032	297x54x12	26987	Inland - (5)	76	Request
> TB27049	300x49x14	27324	Propelled	58	Request
TB28030	300x54x12	28808	Inland - (2)	81	Request
TB29031	297x54x12	29405	Inland	75	617,000
TB30033	295x54x12	30464	Inland	75	640,000
TB30734	346x53x14	-	Inland LPG	67	Request
> TB30912	220x60x16	30921	Coastal	99	Request
TB31029	297x54x12	31771	Inland - (6)	76	400,000
TB36290	290x60x18	30912	Ocean Dbl	72	Request
★ TB39729	295x54x16	39702	Inland	68	Request
> TB40023	230x60x18	-	Ocean	03	Request
★ TB40030	300x60x17	44526	Inland	75	Request
★ TB40031	300x60x17	44915	Inland - (2)	74	Request
★ TB40032	300x60x17	44526	Inland	70	Offer
+ TB53000	274x76x21	55000	Ocean	85	Request
+ TB71320	320x64x23	70600	Ocean	81	Request
TB75000	340x90x19	70000	Ocean	82	Request
★ TB97039	390x68x29	95000	Ocean	67	Request
TB99037	376x78x31	123037	Ocean	76	Request
★ TB99041	400x95x25	149000	Ocean	76	Request

## Miscellaneous Barges

File	Dimensions	Remarks	Built	Price
> MB04141	42x41x8	Jack-Up	65	Request
MB06050	60x50x12	Quarters	-	52,500
MB08035	80x35x11	Quarters	-	Request
> MB08585	85x35x11	Jack-Up	99	1,750,000
> MB08731	87x30x7	Dredge Booster	-	Request
MB10030	100x30x6	Quarters - 30	78	315,000
+ MB10428	110x28x11	Maintenance	-	73,500
MB12029	120x30x7	Quarters - 22	88R	315,000
> MB14081	140x80x15	Jack-Up	81	Request
+ MB15044	150x44x12	Quarters - 54	93	Request
MB15051	150x50x12	Inland Work	69	157,500
MB15535	155x35x12	Cement Barge	77	Request
> MB18099	180x175x25	Jack-Up	82	Request
> MB22143	221x44x-	Work Barge	86	Offer
> MB22587	225x87x15	Chip Processor	-	Request
> MB24283	247x82x16	Ocean Work Barge	80	Request
> MB25652	256x52x12	Cable Barge	81	Request
+ MB26048	260x48x-	Work Barge	45	Request
> MB27172	271x72x15	Floatel - 210+	77	Request
> MB29599	295x245x130	Semi-Sub	77	Request
> MB30001	300x90x20	Ocean Work Barge	80	Request
> MB30002	300x92x20	Ocean Work	77	2,590,000
> MB30085	300x85x20	Quarters - 300	-	Request
> MB30091	330x90x25	Ocean Lay Barge	67	Request
> MB36400	364x45x-	Quarters	76	Request
> MB36737	367x45x10	Quarters - 400	86	Request
> MB38066	380x65x40	Storage	71	Request

## Hopper Barges

File	Dimensions	Remarks	Built	Price
> HB14027	140x28x9	Ocean Dump - (4)	00	Request
HB14036	140x36x-	InlandCement	79	370,000
★ HB14440	144x40x14	Inland	54	21,500
★ HB14638	146x38x17	Inland	52	Request
★ HB14640	146x38x17	Inland Open	48	79,000
> HB15455	155x56x17	Ocean Dump	89	Request
> HB15539	155x39x8	Dump	87	Request
> HB15540	155x39x8	Coastal Dump - (2)	86	Request
> HB16340	163x41x15	Coastal Dump	03	Request
> HB16341	163x40x-	Coastal Dump	03	Request
> HB16540	165x40x10	Propelled Dump	90	Request
> HB16745	167x28x16	Coastal	93	Request
★ HB17140	171x42x16	Inland Dump	62	147,500
★ HB17141	171x42x16	Inland Dump	62	170,000
★ HB17143	171x42x16	Inland Dump	62	210,000
> HB18145	181x45x16	Coastal	93	Request
★ HB18345	183x45x16	Dump	-	42,500



## Hopper Barges Continued

File	Dimensions	Remarks	Built	Price
> HB18632	187x33x11	Inland Dump	71	Request
> HB18633	187x33x11	Inland Dump	69	Request
★ HB18643	186x43x16	Ocean Dump	55	Offer
> HB19442	194x42x20	Ocean Dump - (4)	74	760,000
HB19527	195x26x12	Inland - (16)	82	68,500
HB19529	195x35x16	Ocean	71	Request
★ HB19546	195x46x15	Inland Dump	59	42,500
★ HB19556	195x46x15	Inland Dump	59	85,000
> HB22931	230x31x10	Inland	91	Request
> HB23234	233x34x-	Inland	84	Request
> HB23545	235x45x17	Ocean Dump	-	210,000
> HB25038	250x37x13	Inland	93	Request
> HB25042	250x37x11	Inland	81	Request
★ HB25056	250x55x12	Inland Dump	55	530,000
> HB25131	250x31x11	Inland	89	Request
★ HB27269	272x68x23	Ocean Hopper	59	1,200,000
> HB29537	295x37x14	Inland	87	Request
> HB34165	341x66x31	Ocean	84	Request
> HB36037	360x37x23	Inland	78	Request
> HB36039	360x39x14	Inland	86	Request
> HB36268	362x69x38	Ocean	91	Request
HB38568	386x68x39	Ocean	45	Offer
> HB40175	337x75x24	Coastal	69	895,000
★ HB42082	420x80x31	Ocean	64	Request
★ HB47281	472x80x43	Ocean Self-Unload	68	Request
HB52300	495x68x39	Ocean	43	Request

## Supply Boats

File	Dimensions	Machinery	HP	Built	Price
> SU13136	131x36x26	2xCAT3516	4000	04	Request
> SU14739	148x39x19	2xEMD16645	6000 K	76	Request
SU15005	150x35x12	2xGM12V149	1400	80	790,000
SU15034	150x34x12	2xGM12V149	1400 K	65	Request
SU15532	150x32x13	2xEMD8645	1800	76	315,000
SU15738	157x38x14	2xCATD398	1700	81	1,000,000
SU15739	157x38x14	2xCATD398	1700	81	1,000,000
> SU16000	160x39x15	2xEMD12645	3000 K	69	Request
SU16038	157x38x14	2xCATD398	1700	81	1,000,000
> SU16140	161x40x14	2xYanmar	3000 K	82	Request
> SU16340	163x41x14	2xDaihatsu	2600	80	1,250,000
SU16510	185x36x15	2xEMD12645	4300	97R	Request
SU16537	165x36x13	2xCATD398	1700	68	Request
SU16540	165x36x15	2xGM16V149	1800	67	Request
SU16548	165x38x13	2xGM16V149	1800	81	945,000
SU16614	166x38x13	2xGM16V149	1800	76	945,000
SU16620	166x36x12	2xGM16V149	1860	78	Request
SU16653	166x36x12	2xGM16V149	1800	77	Request

Listings Updated Daily On Internet

File	Dimensions	Machinery	HP	Built	Price
> SU17001	170x37x14	2xLister	2400 K	68	Request
> SU17339	172x47x16	2xMWM	3500	75	Request
SU17341	173x40x14	2xGM16V149	1800	82	Request
SU17500	175x40x13	2xGM16V149	1800	80	Request
SU17600	176x38x13	2xCATD399	2250	72	790,000
SU17618	174x38x13	2xCATD399	2250	71	500,000
> SU17684	176x38x14	2xCAT3512	2400	82	945,000
> SU17943	180x38x15	2xB&W	2480	81	Request
> SU18001	180x38x14	2xCATD399	2250	75	Request
SU18006	180x38x14	2xCATD399	2250	78	945,000
SU18011	180x40x14	2xCATD399	2250	80	945,000
SU18016	180x38x14	2xEMD8645	1950	74	525,000
SU18019	180x44x15	2xEMD12645	3000	79	525,000
SU18022	180x40x14	2xEMD12645	3000	79	790,000
SU18044	180x40x14	2xCATD399	2250	80	945,000
SU18063	180x40x14	2xEMD12645	2700	76	630,000
SU18087	180x38x14	2xEMD12645	3000 K	78	Request
> SU18120	180x40x16	2xAlco	4100 K	82	1,260,000
SU18125	180x40x14	2xGM16V149	2560	79	945,000
> SU18142	180x38x14	2xEMD16567	3280	75	Request
SU18343	183x40x14	2xEMD12645	3000	83	Request
> SU18348	183x38x16	2xEMD16645	5750	76	Request
> SU18445	184x47x17	2xMWM	3500	74	1,050,000
> SU18507	185x39x15	2xLister	4000 K	73	Request
> SU18535	185x35x13	2xCATD398	1700	76	Request
> SU18543	185x41x16	2xAllen	4543 K	72	1,200,000
> SU18565	185x38x14	2xCATD398	1700	77	Request
SU18568	185x40x14	2xEMD12645	4300	79	945,000
> SU18701	187x38x15	2xEMD16567	3200	75	Request
> SU18839	188x38x18	2xMAN	4600 K	76	1,260,000
> SU18936	185x36x17	2xNohab	4600 K	73	1,400,000
> SU18952	190x43x16	4xDaihatsu	4400 K	74	Request
> SU18957	189x45x18	2xWartsila	5500	New	Quote
SU19038	190x38x16	2xEMD12645	5750	73	Request
SU19042	190x38x14	2xGM16V149	1800	75	Request
SU19056	185x40x16	2xEMD16645	3900 K	78	945,000
> SU19250	193x48x18	2xCAT3516	4750	04	Request
> SU19541	196x42x18	2xMirrlees	6166	83	Request
> SU19548	195x42x16	2xRuston	6670 K	73	1,050,000
> SU19602	196x40x20	2xNohab	6160 K	73	Request
> SU19652	197x52x18	2x-	4000 K	05	Request
> SU19847	198x47x21	3xMirrlees	4700 K	86	Request
> SU20039	200x38x15	2xYanmar	3520	80	Request
> SU20142	201x42x20	2xNiigata	6000	75	Request
> SU20145	201x44x19	2xCAT3606	5440 K	03	Request
> SU20200	202x38x15	2xYanmar	3520	84	Request
> SU20240	202x38x15	2xYanmar	3520	83	Request
> SU20241	202x38x15	2xYanmar	3520	84	3,200,000
> SU20244	202x44x20	2xDaihatsu	6500 K	82	Request
> SU20639	206x39x19	2xB&W	3100	75	Request
> SU20745	207x45x21	2xWichmann	4200	77	2,500,000
> SU20746	207x45x21	2xWichmann	4200	75	Request

Details believed correct, not guaranteed. Offered subject to prior sale or charter.





File	Dimensions	Machinery	HP	Built	Price
> SU20749	208x49x23	2xStork	10000 K	83	Request
> SU20851	208x48x33	2xStork	9200	83	Request
> SU20946	210x44x21	2xStork	8000 K	75	1,250,000
> SU20948	209x43x20	2xStork	8000 K	74	Request
> SU21001	210x44x21	2xDelaval	7360 K	77	1,250,000
> SU21122	211x45x16	2xNohab	7040 K	78	Request
> SU21202	211x42x23	2xWichman	7100 K	79	4,500,000
> SU21244	211x45x23	2xWartsila	11140 K	85	Request
> SU21246	212x45x22	2xWichmann	8000 K	83	Request
> SU21646	216x46x23	2xBolnes	4200 K	77	Request
> SU22001	220x50x24	4xMAK	14400 K	82	Request
> SU22051	220x50x24	4xMAK	14400 K	82	Request
> SU22066	220x55x23	4xWartsila	6760	82	Request
> SU22222	222x48x23	4xBergen	12240 K	83	Request
> SU22548	225x48x16	4xBergen	12240 K	83	Request
> SU22601	226x49x24	4xMAK	12240 K	83	Request
> SU23600	236x49x23	4xBergen	10560 K	82	Request
> SU24754	248x54x26	2xWartsila	12000 K	84	Request
> SU25557	255x57x24	2xBergen	6120	82	Request
> SU26265	230x53x25	2xCAT3616	17000 K	01	Request
> SU26560	265x60x23	2xMAK	4000	76	Request
> SU26667	266x53x23	2xSulzer	7200	83	Request

## Utility Boats

File	Dimensions	Machinery	HP	Built	Price
> UB02207	22x7x4	1xPetter	15	84	Request
+ UB05614	56x14x8	2xGM6-71	330	66	82,000
★ UB06524	65x24x6	2xGM	330	51	Request
> UB06525	65x24x6	1xGM	300	94	315,000
> UB06819	69x19x9	2xGM12V71	680	81	210,000
+ UB08024	80x24x2	2xGM8V71	460	69	Request
UB08533	85x33x11	2xGM12V92	900	81	Request
> UB09126	91x26x10	2xGM16V92	1200 K	79	840,000
> UB09721	97x26x8	2xGM16V92	1200	80	Request
UB10024	100x24x11	2xGM12V71	680	66	157,500
UB10036	100x24x11	2xGM12V71	680	82	350,000
> UB10080	100x26x14	2xCAT3408	1000	97	Request
> UB10225	103x25x13	2xGM12V71	910	75	345,000
UB11013	120x26x12	2xGM12V71	680	77	Request
> UB11018	110x26x10	2xGM16V92	1272	81	Request
UB11035	110x24x11	2xGM12V71	680	74	Request
UB11049	110x26x10	2xGM16V92	1200	81	375,000
UB11050	110x26x11	2xGM16V71	910 K	81	Request
UB11055	110x26x9	2xGM16V71	910	76	395,000
UB11056	110x26x9	2xGM16V71	910	76	395,000
> UB11429	114x30x13	2xNiigata	2600	72	525,000
UB11526	115x26x9	2xGM16V92	1200	77	500,000
UB11535	115x26x11	2xGM16V71	910	76	Request
UB11602	116x26x9	2xGM16V92	1200	78	Request
> UB11603	116x26x10	2xGM16V92	1250	81	Request

K = Kort

Z = Z-peller

File	Dimensions	Machinery	HP	Built	Price
UB11824	120x24x9	2xCAT3412	900	72	Request
UB12001	120x26x7	2xGM16V71	910	79	Request
UB12026	120x26x-	2xGM16V71	910	79	385,000
UB12030	120x26x11	2xGM16V92	1200	81	685,000
> UB12031	120x28x10	2xCATD379	1130	79	Request
UB12506	125x26x12	2xGM16V71	910	78	Request
UB12507	125x26x10	2xGM12V149	1400	78	Request
UB12529	125x26x11	2xGM12V149	1400	78	Request
UB12534	125x26x10	2xGM16V71	910	64	Request
+ UB14026	140x26x10	2xGM12V149	1400	78	Request

## Crew Boats

File	Dimensions	Machinery	HP	Built	Price
CB02913	29x8x-	1xGM6-71	228	74	33,000
★ CB03110	31x10x6	1xGM6V53	230	-	37,500
> CB03322	34x10x3	2xVolvo	470	-	Request
> CB03410	34x10x-	2xPerkins	300	-	Request
★ CB03411	34x11x4	2xGM6-71	330	73	69,000
+ CB03610	36x10x4	1xGM6-71	165	59	55,000
CB03613	36x12x-	2xGM6-71	330	72	69,000
CB03618	36x15x5	2xGM6V92	800	93	165,000
CB03817	38x14x4	2xGM8V71	460	75	85,000
CB03818	38x14x6	2xGM6v71	330	71	85,000
CB03819	38x16x6	2xGM6V71	330	72	85,000
+ CB03820	38x14x2	2xCummins	600	94	150,000
+ CB03821	38x14x6	2xGM6-71	360	81	Request
> CB03909	39x9x3	1xYanmar	450	86	Request
CB03913	44x13x7	2xGM6-71	330	79	139,000
> CB04018	40x14x6	2xGM8V71	460	91	165,000
+ CB04020	40x20x4	2xCummins	500	91	125,000
★ CB04115	41x14x6	2xGM6V92	460	-	127,500
> CB04211	42x11x4	1xCAT3208	435	97	Request
CB04214	42x14x6	2xGM6V92	700	82	175,000
CB04220	42x13x4	2xGM6-71	330	67	130,000
> CB04513	45x14x6	2xGM8V71	460	91	160,000
> CB04514	45x13x6	2x-	600	04	155,000
> CB04615	46x14x-	2xVolvo	938	94	Request
★ CB04616	46x15x-	2xGM8V71	480	83	Request
> CB04720	46x15x-	2xCAT3208	300	77	54,000
> CB04812	48x12x4	2xGM8V71	460	89	132,000
> CB04913	50x13x6	2xCAT3406	1100	04	Request
> CB04914	49x13x7	2x-	490	97	Request
+ CB05161	61x18x-	1xCATD379	510	64	110,000
> CB05214	52x15x7	2xGM12V71	1080	83	Request
> CB05216	52x16x6	2xMTU	1068	94	Request
> CB05218	52x16x6	2xMTU	1068	96	Request
> CB05313	52x13x7	2xGM12V71	760	98	260,000
> CB05417	54x13x7	2xGM12V71	680	94	Request
> CB05418	54x13x7	2xGM12V71	760	93	260,000
> CB05816	59x16x7	2xSKL	177	53	Request

+ Located West Coast

★ Located East Coast

> Foreign Flag

Details believed correct, not guaranteed. Offered subject to prior sale or charter.



### Crew Boats

File	Dimensions	Machinery	HP	Built	Price
> CB06015	60x16x-	2xGM12V71	1240	99	580,000
> CB06016	60x17x-	2xCAT3406	882	00	Request
> CB06228	63x28x9	2x-	-	78	Request
> CB06315	63x14x7	2xGM12V71	500	95	Request
+ CB06521	65x18x7	2xGM6-71	360	69	135,000
CB06535	65x16x-	2xGardner	160	47	Request
★ CB06536	65x17x9	2xGM12V71	1020	88	Request
★ CB06538	65x17x9	2xGM12V71	680	67	Request
> CB07621	76x21x9	1xMirrlees	330	70	Request
> CB08219	82x20x-	2xMAN	2000	98	Request
> CB08221	82x21x9	2xGM12V92	1520	94	Request
> CB08522	86x22x10	2xCAT3412	1000	99	Request
CB09021	90x21x9	3xGM12V71	1530	73	400,000
> CB09921	100x22x7	3xGM12V71	1530	77	Request
CB10001	100x24x10	3xGM12V71	1530	80	Request
CB10009	100x23x10	3xGM12V71	1530	78	Request
CB10013	100x23x10	3xGM12V71	1530	76	Request
+ CB10019	100x20x6	3xGM12V71	1320	81	420,000
CB10024	100x22x10	2xGM12V71	1000	92	1,350,000
CB10048	100x21x9	3xGM12V71	1530	77	Request
> CB10123	102x21x10	3xGM12V71	1530	85	Request
CB10502	105x24x10	3xGM12V71	1530	81	Request
> CB10503	105x22x9	3xGM12V71	1530	82	Request
CB10524	105x22x9	3xGM12V71	1530	74	450,000
> CB10529	105x23x10	2xCAT3512	3600	New	Quote
> CB10532	105x32x-	2xCAT3412	1100	04	Request
> CB11021	110x20x11	2xGM16V149	3070	83	Request
CB11037	110x22x10	3xGM12V71	1530	81	Request
CB11047	110x26x9	4xGM12V71	2040	78	525,000
> CB11051	110x25x7	4xGM12V71	2040	77	370,000
CB11052	110x22x10	2xGM12V71	1000	-	1,100,000
> CB11130	112x24x10	3xMAN	2160	79	700,000
CB12024	120x23x10	4xGM12V71	2140	79	800,000
CB12025	120x26x10	4xGM12V71	2040	81	895,000
CB12029	120x26x10	4xGM12V71	2040	79	895,000
> CB12202	122x24x9	2xCAT3512	2890	81	Request
CB12525	125x25x11	4xCummins	2600	85	Request
CB12530	125x24x10	3xCAT3412	2475	77	975,000

### Landing Crafts

File	Dimensions	Machinery	HP	Built	Price
> LC07223	72x21x9	4xGM6-71	660	-	241,000
+ LC07301	73x22x5	2xGM12V71	680	54	185,000
+ LC07401	74x21x-	4xGM6-71	660	60	132,500
+ LC07421	74x21x-	4xGM8V71	460	54	85,000
★ LC07423	74x21x4	4xGM6-71	660	-	150,000
> LC07425	74x21x-	2xGM12V71	680	-	85,000

Listings Updated Daily On Internet

File	Dimensions	Machinery	HP	Built	Price
> LC08621	87x21x9	2xDorman	500	86	Request
+ LC09024	95x24x5	2xGM8V71	460	77	Request
> LC11432	114x32x-	2xCummins	1000	95	Request
> LC11829	118x30	2xCATD343	-	79	Request
> LC11924	119x25x6	4xDeutz	720	66	Request
> LC12124	121x25x7	2xMitsubishi	640	97	420,000
> LC12326	126x25x7	2xMitsubishi	640	95	315,000
> LC13228	132x27x-	2xMercedes	1260	55	Request
+ LC13530	135x30x5	2xGM12V71	680	77	Request
+ LC13538	135x38x7	3xCAT3406	975	85	Request
> LC13639	136x39x10	2xCAT3306	760	91	800,000
> LC13640	136x39x10	2xDeutz	750	91	800,000
> LC14839	148x39x11	2xCAT3412	1200	04	Request
+ LC15223	152x23x11	2xGM16V71	910	44	55,000
> LC15535	155x35x-	2xCAT3412	1230	00	Request
> LC16229	162x29x-	-	660	91	495,000
LC16254	162x54x10	4xCAT3406	1100	04	Request
> LC16436	185x35x8	2xCummins	700	94	710,000
> LC16439	147x39x10	2xCAT3408	730	82	Request
> LC16701	167x42x11	2xDeutz	1740	77	Request
> LC16832	168x33x-	2xMitsubishi	1580	89	Request
> LC16835	168x35x9	2xCAT	1000	68	Request
> LC17345	173x46x8	2xCAT3408	805	93	Request
> LC18033	180x33x12	2xMTU	1700	99	Request
> LC19139	192x40x11	2xGM12V92	1220	93	Request
> LC19147	192x46x12	2xGM16V92	1200	83	1,500,000
> LC20133	201x34x-	2xDeutz	1200	72	Request
> LC21845	245x55x12	2xCATD399	2250	77	Request
> LC23649	236x49x15	2xMirrlees	2000	77	Request
> LC23650	236x49x15	2xMirrlees	2000	77	Request

### Research Dive Seismic & Rescue

File	Dimensions	Machinery	HP	Built	Price
+ RV00805	8x5x-	Submersible	-	99	1,200,000
★ RV04312	43x12x8	1xGM6-71	-	69	Request
+ RV07422	74x22x7	4xGM6-71	660	54	325,000
+ RV08922	89x22x-	2xGM12V71	800	-	Request
> RV09626	96x26x-	2xMAN	550	82	Request
> RV09824	98x24x11	1xSKL	540	59	Request
> RV10624	106x25x13	1x-	-	76	Request
> RV10719	107x20x11	2xStork	950	64	Request
★ RV11024	110x24x12	2xGM12V71	680	65	Request
> RV11030	110x30x-	1xCAT3512	1360	79	915,000
> RV11542	125x43x12	2xCATD398	1700 K	78	Request
> RV11832	118x33x13	2xVolvo	550	00	Request
> RV12001	120x36x8	2xGM12V71	680	82	Request
+ RV12524	125x24x11	2xCAT3412	1250	26	80,000
> RV12628	127x28x9	2xBrons	900	69	Request
> RV13031	130x30x20	1xRuston	1650	75	Request
+ RV13232	132x32x8	2xCATD375	600	56	Request

+ Located West Coast   ★ Located East Coast   > Foreign Flag



File	Dimensions	Machinery	HP	Built	Price	File	Dimensions	Machinery	HP	Built	Price
+ RV13333	133x33x12	2xCATD353	850	44	Request	> RV23550	240x62x17	3xEMD16645	9210 K	85	Request
> RV13632	136x32x15	2xAllen	1040	67	550,000	RV23795	237x95x46	2x-	3000	04	Request
+ RV13636	136x36x11	2xEnterprise	1000	56	650,000	> RV23849	238x48x16	4xFairbanks	5330	59	Request
> RV13728	137x27x13	1xWichmann	600	59	Request	> RV24949	249x49x26	4xWartsila	6168	05	Request
> RV13729	153x30x21	1xWichmann	1200	71	Request	> RV24965	249x65x20	-	5500	05	Request
> RV13731	137x27x13	1xBergen	495	60	Request	> RV26360	263x60x21	4xWartsila	12000	84	Request
> RV13832	138x32x23	2xMAN	1200	67	Request	> RV26450	294x57x22	1xSulzer	4800	76	Request
> RV14132	141x32x15	1xDeutz	1080	66	Request	> RV26459	265x50x22	2xMAK	4000	75	Request
> RV14523	145x24x12	1xMAK	1200	64	Request	> RV26660	262x60x23	2xCAT3608	7200	78	Request
> RV15023	150x24x-	1xB&W	990	30	Request	> RV26849	268x49x17	1xSulzer	4200	86	Request
> RV15032	150x32x9	2xMan	2450	85	Request	> RV27256	272x56x25	2xBergen	6500	93	9,750,000
RV15037	150x36x13	2xCATD398	1700	65	Request	> RV27747	278x47x23	4xCATD399	4500	80	Request
> RV15427	154x27x21	1xMWM	1200	65	Request	> RV29557	295x57x33	1xSulzer	4290	89	Request
> RV15430	155x30x16	2xMirrlees	2200	80	Request	> RV30321	321x74x-	2xPaxman	2000	-	Request
> RV15533	155x34x21	1xBergen	1550	79	Request	> RV32182	323x82x22	2xWichmann	7000	78	Request
> RV16000	159x40x15	2xYanmar	3200 K	82	Request	> RV32710	327x105x26	2xBergen	7300	76	Request
> RV16232	162x31x16	1xPaxman	700	71	Request	> RV36556	366x56x31	None	-	92	Request
> RV16328	163x28x20	1xDeutz	1500	82	Request	> RV36760	367x60x38	2xPielstick	8000	73	Request
> RV16535	166x35x20	2xSACM	1650	70	Request	> RV37360	374x61x39	3xSulzer	5400	87	Request
> RV16729	167x29x17	1xDeutz	1600	50	Request	> RV42572	419x72x31	4xWartsila	14965	99	Request
★ RV17239	175x38x14	2xCATD398	1700	83	Request	> RV52172	522x74x39	2xSulzer	15600	87	Request
> RV17336	173x36x13	2xMWM	1900	73	Request						
> RV17601	157x36x18	1xCAT3606	2000	-	Request						
> RV17635	176x35x20	1xSKL	1320	81	Request						
> RV17737	177x37x15	2xLister	2400	69	Request						
RV18001	180x40x14	2xCATD399	2250	81	1,050,000						
> RV18036	180x36x18	1xStork	2000	77	Request						
> RV18138	180x38x15	2xB&W	2480	77	Request						
> RV18243	183x39x18	4xBaudouin	2400	77	Request						
> RV18444	185x45x17	2xMirrlees	4000 K	73	Request						
> RV18529	185x29x17	1xDeutz	1000	63	Request						
> RV18540	185x38x15	2xCATD399	2250	76	Request						
★ RV18640	186x40x15	2xWichmann	2700	80	1,100,000						
> RV18910	189x40x15	2xYanmar	2600	79	Request						
★ RV18933	205x33x21	1xB&W	2800	80	Request						
★ RV18937	189x37x20	4xLister	2640	68	Request						
★ RV18938	189x38x14	2xCATD399	2250	79	Request						
★ RV19039	190x40x18	2xEMD12567	2750	77	Request						
> RV19229	192x30x23	1xB&W	1050	49	Offer						
> RV19545	188x45x17	4xEMD16567	6400 K	73	Request						
> RV19840	198x40x17	2xEMD12645	3000 K	81	Request						
> RV20042	235x40x25	2xRuston	2160	70	Request						
> RV20534	205x33x16	1xWichmann	1155	71	Offer						
> RV20829	208x29x20	1xDeutz	1500	82R	Offer						
> RV20844	209x44x22	2xMAK	4200	75	Request						
> RV20847	211x61x20	4xYanmar	6400 K	82	Request						
RV21014	210x40x14	2xCAT3516	3000	82	1,575,000						
> RV21931	219x31x-	1xDeutz	1655	62	Request						
> RV22445	224x45x17	2xDeutz	2400	78	Request						
> RV23040	258x44x-	1xB&W	1500	74	1,000,000						
> RV23140	231x40x20	2xMirrlees	2735	81	Request						
★ RV23440	235x39x26	1xRuston	2160	66	Request						

K = Kort

Z = Z-peller

(Continued from page 1)

prices, reaching a record (unadjusted for inflation) 221.2 cents/gallon on October 25, 2004, were not sufficient to temper strong demand that was in part fueled by a still strong U.S. economy. Diesel fuel prices have exceeded the price of regular unleaded gasoline since late August of this year.

This year also marked one of the most severe hurricane seasons in many years with three back-to-back storms pummeling large sections of Florida, Alabama and Mississippi. The hurricanes caused major disruptions to Gulf of Mexico crude oil production, in addition to causing damage to port facilities, oil platforms, and refineries located near the Gulf Coast. The hurricanes also delayed the offloading of crude oil imports in the Gulf region, compounding the already low U.S. crude oil supply situation at that time.

Last but not least, the December deep-freeze that sent arctic temperatures roaring across major portions of the nation during the last days of 2004 caused some petroleum market analysts to debate the adequacy of heating fuel inventories for the upcoming winter heating season.

As we start the New Year, the current situation in oil markets may strike a chord with those of us old enough to remember the final scene in the last episode of the "Mary

(Continued on page 12)

Details believed correct, not guaranteed. Offered subject to prior sale or charter.

(Continued from page 11)

*Tyler Moore Show*". For those who are too young or don't remember, the cast is enjoying a group hug and is crying, since most of them have been fired and will no longer see each other, when someone mentions that they need a tissue. However, rather than one person going to get the tissue box and bringing it back, the entire group remains in their hug and shuffles en masse over to the tissue box. The wide fluctuations in daily oil prices seen in recent trading sessions, especially given lighter-than-normal trading over the last two weeks due to the holidays, conjures up an image of traders staying clustered together and helping to move oil prices one way or another on what appears to be fairly insignificant or old news. For example, the near-month futures price for light, sweet crude oil was up about \$2 per barrel at one point yesterday on news that Saudi Arabia had cut their production by 500,000 barrels per day. Yet, this "news" is exactly what had been announced when OPEC met last month, and most analysts had expected Saudi Arabia to follow through on its commitment. But, once prices started edging up, the increase snowballed. This followed a drop of \$1.33 per barrel the previous day, ostensibly on the forecast for warmer-than-normal weather to continue in the Northeast and central Atlantic regions, where most of the heating oil is consumed in this country. What's an analyst to think?

It is important to distinguish the difference between day-to-day oil price movements and the outlook for oil markets over many months. Day-to-day price movements may be strongly influenced by weather forecasts, statements by key oil ministers, and any current events that have the potential to affect near-term oil supply. However, fundamentals of supply and demand will be the major determinant of oil prices over the next several months and beyond. Global oil demand growth is likely to be the key factor for oil markets in 2005. While most analysts expect global oil demand growth to be significantly less than the 2.6 million barrels per day seen in 2004, markets will remain tight if it is close to the 2.0 million barrels per day EIA expects in 2005, a level that exceeds expected growth in non-OPEC supply and downstream refinery capacity. However, if world oil demand grows by less than 1.5 million barrels per day in 2005, as some analysts are expecting, oil markets could loosen up and the likelihood that prices could ease in 2005 would increase. One thing is clear, however. While there may be an element of a group mentality in the day-to-day movements in oil prices, there is no such group consensus on what path oil prices will take over the next 12 to 24 months, other than that is likely to be a bumpy ride on a day-to-day basis.

MARCON INTERNATIONAL, INC.  
P.O. Box 1170, 9 NW Front Street  
Coupeville, Washington 98239

Address Service Requested

Presorted Standard  
U.S. Postage  
PAID  
Coupeville, WA 98239  
Permit No. 43

TG49124 — New Build Multi-Purpose Tug

