



Marcon International, Inc. NEWSLETTER

Winter 2002

Phone: (360) 678-8880
Telex: 4931464
Website: www.marcon.com

Fax: (360) 678-8890
Email: info@marcon.com

\$20.00 U.S., Canada & Mexico: One Year
\$25.00 Other Countries: One Year

Join us at the
Seattle Maritime
Salvage Conference
2002 on January
16-17.

Tugboats	pg. 2-4
Push Boats	pg. 4
Deck Barges	pg. 5-6
Derrick Barges	pg. 6-7
Tank Barges	pg. 7
Misc. Barges	pg. 7-8
Hopper Barges	pg. 8
Supply Boats	pg. 8-9
Utility Boats	pg. 10
Crew Boats	pg. 10
Landing Crafts	pg. 11
Research, Dive	pg. 12

For more extensive listings of Vessels and Barges, including photos, surveys, drawings, etc., check our website at www.marcon.com

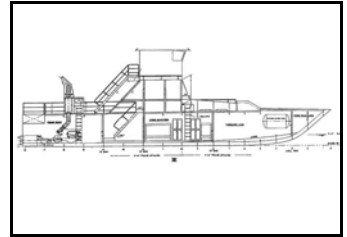
We will soon be adding to our website library a Marine Terminology Glossary that will include definitions, foreign translations, photos and drawings.

A DIVERSE YEAR IN REVIEW

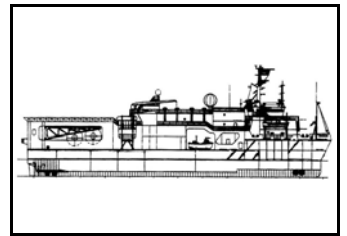
At the start of 2001, although economies headed lower, the oil market was still picking up. Oil was priced at high 20's and we seemed headed for a strong recovery. Natural gas prices set records increasing drilling. Day rates were higher, in some sectors above those in '97. Sales were strong and Marcon brokered 30 vessels in six months. In the summer though, the market hit a plateau. Economic factors lessening demand dampened the market though oil prices, driven by OPEC, remained stable. It seemed to be only a matter of time though before either OPEC would falter and prices fall, or the economy would recover and demand strengthen. Given these possibilities, oil majors hedged bets. They weren't going full-speed, but weren't slashing budgets either. The summer plateau was a tenuous watch-game of demand and price controls. The US Gulf saw the first influence of a slowing economy on natural gas prices. The energy crisis in the western US gave way to over-supply, driving utilization down, especially in G.O.M. shallow-water ops. In September, unprecedented terrorist attacks shocked energy markets. Prior to the attacks, OPEC controls were purely driven by economics. Following September 11th, they had to factor in political ramifications of cutting supply to hold prices. Given the unclear state of the world late September and early October, OPEC was forced to keep oil flowing. A cut in production was not politically viable, even as demand worldwide almost immediately fell. The short-term decline in refined product demand and general market psychological factors since saw, the price of oil slide nearly 25% from levels prior to the attacks. Since the attacks, OPEC started trying to obtain cuts from non-OPEC members. OPEC's cuts over the last 4 years to keep prices high, reduced their market share. Non-OPEC countries have been raising production to take advantage of higher prices, thus forcing OPEC to cut further. In recent negotiations, Russia agreed to a small cut, but refuses to make dramatic moves. OPEC is now forced to decide whether to cut further, or play a dangerous game of driving prices down to keep non-OPEC production lower. With overall lessening demand, it is difficult to know the best policy. Predicting oil prices over the first half 2002 will be difficult. World economies play an important roll. If economic activity rebounds, prices should stabilize and head higher. If demand weakens further, OPEC could lose the control they've enjoyed over the last 2 years. Given this uncertainty, we see a continuing cautious approach to E+P. Another shift in 2001 was a slowing marine telecommunications business. This market provided employment for many oilfield vessels 1998-2000. During 2001, the telecommunications & internet technology slowdown finally caught up to the marine side. Cable support and lay vessels are now in the same predicament faced by oilfield counterparts in '98. The market should recover in 2-3 years as demand catches up with networks already in place, but in the meantime there are idle boats. During the earlier upswing in the cable market, Marcon brokered the sale of several vessels from oilfield to cable roles. Now with the slowdown, we have new listings of large DP vessels seeking work in the oilfield. 2001 was a mixed bag of unpredictable markets and unthinkable events, but is ending on a cautiously positive note. Although the second half saw a slowdown, Marcon still maintained the average of one vessel sold per week, ending up with our best year ever in revenues. It is difficult to predict what will happen in 2002, but all we can do is keep working and hope for the best.

Complete article at www.marcon.com

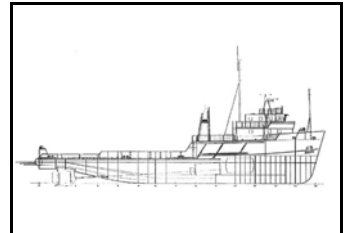
Featured Vessels



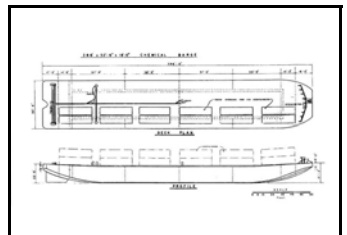
CB07534



RV26759



SU17103



TB28286



Vessels for Sale and Charter Tug Boats

File	Dimensions	Machinery	HP	Built	Price
+ TG01822	22x9x-	1xGM6-71	165	-	36,500
+ TG02051	50x14x-	1xBuda	200	35	35,000
★ TG02052	50x15x6	1xGM6-71	174	41	55,000
+ TG03357	57x14x6	2xGM6-71	330	51	79,000
+ TG03525	25x10x-	1xGM8V71	340	55	Request
+ TG03540	10x44x6	1xCummins	225	58	37,500
★ TG03552	52x14x6	1xGM12V71	340 K	60	157,500
> TG03640	40x16x7	1xCummins	365 K	81	110,000
TG03642	42x13x18	2xGM6-71	330	57	79,000
TG04047	48x16x7	2xGM6-71	330	76	150,000
+ TG05007	50x15x6	1xCATD379	500	50	52,500
> TG05050	50x16x-	2xCAT3412	504	82	Offer
> TG06055	57x20x-	1xCummins	660	71	125,000
+ TG06065	65x17x6	1xCATD379	565	41	85,000
> TG06083	80x20x10	1xGM12V149	940	45	Request
TG06818	56x18x-	2xGM12V71	680	78	375,000
> TG06857	58x19x-	2xGM12V71	680	72	260,000
TG06867	65x22x9	2xGM12V71	680	69	Request
> TG07020	71x20x10	2xGM12V71	680	62	Request
> TG07021	68x18x10	1xCATD348	725	45	100,000
> TG07365	66x20x10	2xCAT3408	730	79	63,000
> TG07654	54x19x8	2xCAT3406	760 K	93	315,000
> TG07661	61x17x-	2xGM8V92	600	-	232,000
> TG07664	64x20x9	4xGM6-71	660	1895	45,000
> TG08000	54x17x9	2xCAT3408	816	-	Request
> TG08014	61x17x7	2xGM12V71	680	92R	Request
★ TG08023	81x23x9	1xEMD8567	900	43	Request
> TG08053	53x16x-	1xCATD398	765 K	75	Request
★ TG08065	65x23x9	2xCATD353	850	69	390,000
> TG08078	76x22x9	2xCAT3408	800 K	96	395,000
+ TG08257	57x16x6	3xGM6-110	825 K	56	350,000
★ TG08568	66x18x9	1xCATD398	850 K	42	Request
> TG08654	54x17x8	2xCAT3408	866 K	88	Request
> TG08974	74x22x10	1xDeutz	890	68	Request
> TG08988	89x20x-	1xCAT	890	66	210,000
+ TG09063	63x17x9	1xCATD398	850 K	41	150,000
> TG09073	65x26x8	3xGM8V71	900	80	210,000
> TG09076	74x23x-	1xGM16V149	900 K	69	Request
> TG09080	75x23x9	2xCAT3408	940 K	98	Request
> TG09084	84x21x9	1xStork	900	53	77,500
> TG09086	85x20x10	1xB&W	880	56	210,000
> TG09087	86x25x14	1xPolar	900 K	69	Request
> TG09088	88x26x-	1xF'banks	900	62	420,000
> TG09101	101x28x6	2xGM16V71	926	56	130,000
★ TG09159	59x20x7	2xGM16V71	910	58	Request

Listings Updated Daily On Internet

File	Dimensions	Machinery	HP	Built	Price
> TG09363	64x19x9	1xDeutz	930	63	Request
> TG09455	55x17x-	2xCAT3408	940	99	Request
> TG09471	71x22x10	2xCAT3408	940	92	298,000
+ TG09556	56x14x8	2xCAT3408	950	44	200,000
> TG09829	98x28x14	1xEMD	1500 K	-	Request
+ TG10016	94x25x12	1xE'prise	1000	42	175,000
> TG10067	65x18x-	2xGM12V71T	1000	-	370,000
+ TG10073	73x21x12	1xCummins	1050	52	Request
> TG10080	80x20x10	1xCATD398	765	53	240,000
> TG10089	90x26x12	1xMWM	1000 K	65	160,000
> TG10093	92x26x-	1xMAN	1000 K	59	240,000
> TG10099	100x25x14	1xDeutz	1000 K	60	79,000
> TG10102	99x25x13	2xLister	1000	57	Request
> TG10876	76x23x10	2xCAT3412	1080	94	328,000
> TG10892	93x23x13	1xMWM	1080	56	210,000
+ TG11000	71x21x9	2xCATD379	1130 K	61	650,000
+ TG11017	65x17x9	2xCATD379	1130	61	350,000
> TG11077	78x24x11	2xDeutz	1128	77	Request
> TG11078	77x24x10	2xYanmar	1100	96	Request
> TG11082	82x24x11	2xYanmar	1100	83	Request
> TG11090	90x25x13	1xPolar	1190 K	59	Request
> TG11106	106x28x15	1xEng. Elec.	1130	67	Request
> TG11589	90x21x10	1xDeutz	1150	64	157,000
+ TG12000	91x25x10	1xCATD399	1125	42	Request
★ TG12002	101x24x12	2xE'prise	1200	39	70,000
+ TG12003	97x25x14	1xEMD12567	1200	52	Request
+ TG12024	85x24x10	1xEMD12645	1800	43	Request
> TG12063	69x22x9	2xCATD397	1000	56	275,000
> TG12066	65x23x-	2xGM8V149	1200	85	600,000
+ TG12069	75x24x7	2xGM16V92	1200	80	Request
> TG12086	78x21x-	1xNohab	1200	28	Request
TG12109	105x25x13	1xCATD399	1125	42	132,500
> TG12113	77x25x10	2xYanmar	1280	98	Request
+ TG12115	107x27x14	1xF'banks	1200	54	60,000
> TG12118	77x25x10	2xYanmar	1280	96	Request
> TG12119	103x28x-	1xRuston	1270	58	Request
> TG12181	83x18x8	1xCAT3512	1210 K	71	Request
> TG12889	89x26x13	2xSulzer	1200	76	110,000
+ TG13069	73x24x10	2xGM16V92	1200 K	79	Request
> TG13071	71x22x-	1xWichmann	1320	17	150,000
> TG13076	76x23x10	2xCATD3412	1342	97	Request
> TG13101	94x26x12	2xLister	1320	61	Request
> TG13102	102x23x-	1xRuston	1360 K	67	95,000
> TG13107	106x28x13	1xPolar	1364	58	Request
> TG13108	107x28x-	1xMWM	1300	64	122,500
+ TG13116	117x24x11	2xCAT3412	1250	26	Request
> TG13297	98x30x15	2xLister	1320	57	Request
> TG13483	84x25x10	2xCAT3412	1342 K	97	394,000
> TG14024	80x24x10	2xGM12V149	1400	82	Request
> TG14088	89x24x12	2xStork	1320	71	Request
TG14103	103x25x15	2xGM12278	1200	43	155,000
+ TG15002	87x24x13	1xEMD12645	1500 K	43	350,000

K = Kort

Z = Z-peller

Details believed correct, not guaranteed. Offered subject to prior sale or charter.



Tug Boats Continued

File	Dimensions	Machinery	HP	Built	Price
> TG15005	104x23x11	1xMAK	1500 K	53	315,000
+ TG15087	87x24x12	1xEMD12645	1500 K	84R	50,000
> TG15098	96x26x13	2xCAT398	1530	90R	Request
> TG15102	98x27x13	1xF'banks	1500 K	62	267,500
> TG15107	100x26x-	1xRuston	1465 K	65	145,000
> TG15108	92x23x10	1xDeutz	1500 K	-	290,000
> TG15112	111x28x7	2xCAT	1530	46	187,500
> TG16030	80x21x-	2xCummins	1600 K	01	945,000
> TG16104	100x31x11	1xDeutz	1578 K	64	Request
TG16107	104x31x-	1xMAK	1600	18	132,500
> TG16108	101x29x16	1xNohab	1660 K	77	Request
+ TG16113	112x25x16	1xEMD16645	1680	41	Request
> TG18008	95x24x11	2xGM16V149	1800	65	265,000
> TG18018	108x30x-	2xDeutz	1800	68	Request
> TG18065	85x28x11	2xGM16V149	1860 K	82	1,100,000
★ TG18094	89x25x12	1xEMD16567	1800	56	265,000
> TG18136	150x33x20	2xGM16V149	2400	44	895,000
> TG19085	85x20x-	2xGM12V149	1880	R	550,000
> TG19098	98x30x12	2xCAT3508	1920 K	98	Request
+ TG19151	151x33x-	1xF'banks	1920	57	250,000
> TG19173	174x30x13	2xDaihatsu	1900	72	Request
+ TG20076	76x26x10	2xCAT3508	2000	00	Request
> TG20082	89x26x12	2xNiigata	2000	82	265,000
TG20092	90x32x13	2xCAT3508	2000 K	98	Charter
★ TG20093	93x22x11	1xF'banks	2000	03	Request
> TG20099	87x31x18	2xMitsui	2000	97	Request
★ TG20101	125x28x17	1xE'prise	2000	57	575,000
> TG20105	103x28x14	1xNohab	2040	84	Request
TG20121	108x29x14	1xF'banks	2000	67	Request
> TG20122	122x29x15	2xDeutz	2200 K	69	Request
TG20125	125x28x17	1xE'prise	2000	57	275,000
+ TG21001	99x25x14	1xEMD12645	2150	52	300,000
> TG21002	116x29x13	1xMirrlees	1810 K	68	250,000
> TG22003	94x29x-	2xCATD399	2250 K	80	Request
TG22010	100x27x14	2xCAT	2250	74	Request
> TG22096	94x30x14	2xCATD399	2250 K	81	Request
> TG22112	110x32x16	2xCATD399	2250	70	400,000
★ TG22121	121x32x17	1xEMD16645	2200	65	Charter
★ TG22122	110x32x16	1xEMD16645	2200	65	Request
★ TG22123	122x32x17	1xEMD16645	2200	65	750,000
> TG22510	100x29x13	2xCATD399	2250	69	420,000
> TG22585	85x25x12	2xCATD399	2250 K	96	980,000
> TG22595	96x28x14	2xCrepelle	2250	77	800,000
> TG23096	95x29x15	2xCrepelle	2360 K	81	Request
> TG23105	96x30x14	2xDeutz	2320	75	525,000
> TG23126	126x26x20	1xDeutz	2375 K	83R	Request
> TG24003	95x28x13	2xYanmar	2400	96	Request
+ TG24094	94x25x-	2xGM12V149	2400	-	120,000
> TG24109	95x30x14	2xYanmar	2400 K	01	1,500,000

File	Dimensions	Machinery	HP	Built	Price
> TG24110	95x28x13	2xNiigata	2400 Z	72	275,000
> TG24120	105x31x15	2xYanmar	2400	94	1,500,000
> TG24121	95x30x14	2xCAT3512	2400	00	Request
> TG24128	105x28x12	2xE'prise	2400	65	525,000
> TG24130	105x30x13	2xNiigata	2400 Z	71	275,000
> TG24696	97x28x14	1xRuston	2460	68	525,000
> TG24882	83x28x15	1xB&W	2480	80	Request
> TG25006	92x32x15	2xGM16V149	2500 Z	96	Request
> TG25087	87x26x13	2xMWM	2900 K	82	Request
> TG25100	100x27x12	2xGM16V149	2560	66	475,000
> TG25114	114x30x14	2xNiigata	2500 K	76	Request
> TG25118	117x26x8	4xGM16V71	2100 K	69	Request
> TG25124	125x30x-	2xNiigata	2500 K	76	Request
> TG25129	129x30x-	1xMirrlees	2520 K	68	Request
★ TG25600	95x28x13	2xGM16V149	2560 K	75	1,360,000
> TG26008	117x30x15	2xYanmar	2600 K	77	Request
> TG26096	97x32x14	2xWartsila	2655 K	94	2,200,000
> TG26104	104x28x11	2xYanmar	2600 K	78	525,000
> TG26108	106x31x14	2xDaihatsu	2600 Z	82	800,000
★ TG26109	107x26x-	2xGM16V149	2560	54	975,000
> TG26492	93x29x-	2xRuston	2640 K	81	Request
> TG27005	94x30x-	2xDeutz	2720	84	1,500,000
> TG28086	86x24x-	2xNiigata	2800	89	Request
> TG28098	97x26x15	1xEMD16645	2800	80	Request
> TG28108	95x29x14	2xYanmar	2800	-	Request
> TG28109	108x30x13	2xMTU	2800	77	Request
> TG28129	128x33x16	2xRuston	2800	67	375,000
> TG28210	109x32x-	2xRuston	2820 K	80	900,000
> TG30011	101x31x14	2xYanmar	3000	96	Request
> TG30082	82x28x15	2xCAT3512	3300 K	01	Request
TG30113	105x28x12	2xEMD12645	3000	66	2,000,000
+ TG30123	107x28x14	2xEMD12645	3000 K	54	Request
TG30138	121x28x-	1xAlco	3000	95R	300,000
> TG30141	124x32x16	2xMAN	3000	97R	Request
★ TG30154	120x30x-	2xCAT3516	3000	68	Request
> TG30161	125x30x-	1xRuston	3000 K	-	Request
> TG31111	112x29x13	2xNiigata	2600	94	Request
> TG32012	110x31x14	2xNiigata	3200	75	Request
> TG32100	119x32x14	2xNiigata	3200 Z	94	1,900,000
> TG32104	104x32x14	2xCummins	3200 K	00	Request
> TG32116	106x29x12	2xPielstick	3200	97	Request
> TG33001	120x32x-	2xRuston	3380 K	69	385,000
> TG33107	105x34x16	2xCAT3516	3300 Z	00	3,300,000
> TG33119	120x33x-	2xRuston	3380	69	Request
> TG33130	130x31x-	2xFuji	3300	76	900,000
> TG34105	98x31x12	2xDeutz	3400	97	Request
> TG34116	117x33x16	2xRuston	3380 K	69	Request
> TG34119	105x30x14	1xNohab	3380	89	Request
> TG34128	127x29x15	1xRuston	3400 K	71	Offer
> TG35116	116x30x40	2xFuji	3500	80	Request
> TG36002	134x25x13	1xAlco	3560 K	43	250,000
> TG36085	85x32x15	2xYanmar	3600	02	Request

K = Kort

Z = Z-peller

+ Located West Coast

★ Located East Coast

> Foreign Flag



Tug Boats Continued

File	Dimensions	Machinery	HP	Built	Price
> TG36099	97x28x12	2xNiigata	2400	69	265,000
> TG36106	98x31x16	2xYanmar	3600	Z 99	Request
> TG36107	98x31x16	2xYanmar	3600	01	Request
> TG36114	112x39x12	2xNiigata	3600	K 82	895,000
+ TG36122	123x30x18	1xEMD20645	3600	95R	Request
> TG38124	122x33x18	2xRuston	3800	K 78	Request
> TG39119	107x32x-	1xPielstick	3900	74	1,300,000
> TG39131	131x34x16	1xMAN	3900	73	Request
> TG39135	135x34x19	2xRuston	3900	K 70	Request
★ TG40086	90x41x16	3xCummins	4350	K 98	Request
> TG40113	101x37x17	2xCAT3516	4000	K 99	Request
> TG40126	121x35x16	2xYanmar	4000	K 96	3,500,000
> TG40136	136x36x17	2xAlco	4460	K 78	Offer
> TG40138	121x35x16	2xYanmar	4000	K 98	Request
> TG40145	144x35x17	2xAllen	3852	K 72	1,360,000
> TG40153	130x33x17	2xYanmar	4000	93	Request
> TG40361	123x36x-	2xVoith	4000	T 75	Request
> TG42098	98x32x18	2xMAK	4200	97	Request
> TG42101	105x34x17	2xCAT3516	4200	K 00	Request
> TG42105	105x34x17	2xCAT3516	4200	Z 00	Request
> TG42106	100x33x16	2xCAT3516	4200	00	Request
> TG42109	104x31x-	2xFuji	4200	K 69	Request
> TG42119	112x33x15	2xNiigata	4200	72	Request
> TG42123	123x33x17	2xMWM	4250	K 78	Request
> TG43138	138x37x19	2xMAK	4300	K 73	Request
> TG43171	172x36x19	2xEMD12645	4300	K 72	1,365,000
TG43221	124x32x-	2xEMD12645	4300	67	Request
> TG43412	100x31x-	2xWartsila	4344	Z 01	Request
> TG44000	105x34x18	2xCAT3516	4400	Z 01	Request
> TG44098	98x32x16	2xDeutz	4460	01	Request
★ TG44122	122x34x18	2xFairbanks	4400	00R	Request
> TG44135	136x36x17	2xAlco	4460	K 78	Request
+ TG45205	205x39x-	4xCATD399	4500	44	Offer
> TG46097	97x33x16	2xMTU	4660	K 02	Request
> TG46119	119x37x19	2xRuston	4600	K 85	Request
★ TG46128	128x33x14	2xFbanks	4600	67	Request
TG48097	96x35x22	2xAlco	4800	79	Request
> TG49130	130x33x17	2xB&W	4960	K 74	945,000
> TG50098	98x32x18	2xMAK	5000	98	Request
> TG50106	107x36x-	2xABC	5050	00	Request
> TG50114	114x36x18	2xYanmar	5000	Z 01	5,000,000
> TG50122	121x37x16	2xYanmar	5000	K 98	Request
> TG50131	131x33x17	2xAlpha	4960	K 75	Request
> TG50134	135x33x18	2xMAK	5000	K 78	Request
> TG50150	150x33x18	2xNordberg	5000	86R	Offer
TG51090	90x41x16	3xCummins	5100	K 00	Request
> TG52096	97x36x-	2xCAT3606	5200	01	Request
> TG52120	121x31x14	2xYanmar	5200	83	Request
> TG53096	97x36x-	2xCAT3606	5300	02	Request

Listings Updated Daily On Internet

File	Dimensions	Machinery	HP	Built	Price
> TG56147	147x37x17	2xMWM	5600	K 74	Request
> TG56148	148x36x20	2xBergen	5600	K 73	Request
TG57007	145x35x17	2xEMD16645	5750	68	Request
> TG57181	181x77x30	2xEMD16645	5750	K 75	Request
> TG58155	156x39x18	2xEMD16645	5750	K 77	Request
TG60110	110x41x16	3xWartsila	5100	89	Request
> TG65151	150x36x22	2xNohab	6500	K 77	Request
TG70135	135x38x20	2xEMD20645	8000	K 00R	Request
TG70136	138x38x21	2xEMD20645	8000	K 00	Request
> TG70144	144x38x20	2xNohab	7072	K 75	1,050,000
TG72150	150x40x22	2xEMD20645	7200	K 76	2,500,000
> TG73714	148x46-21	2xCAT3608	7370	95	Request
> TG80150	151x43x-	2xPielstick	8000	K 78	Request
> TG80152	146X35X16	2xMAK	8000	K 75	Request
> TG84000	155x41x20	2xMAK	8400	K 77	1,950,000
TG84111	120x44x29	2xMAK	8400	91	Request
TG90237	238x43x20	2xHanshin	9000	K 76	Request
> TG90305	304x-x-	2xRussky	9000	77	Request
★ TG99999	156x53x-	1xMAN	15200	81	Request

Push Boats

File	Dimensions	Machinery	HP	Built	Price
TP01542	64x-x-	1xCAT	150	-	Request
TP02053	53x18x-	1xGM8V71	230	-	Request
> TP03085	85x23x-	1x-	300	87	Request
> TP03328	69x28x5	2x-	330	87	53,000
+ TP03341	40x16x-	2xGM6-71	330	-	38,500
+ TP03656	56x15x-	2xGM6-71	360	45	Request
+ TP04025	25x14x5	2xGM6-71	330	88	55,000
TP04040	40x16x6	2xGM6-71	330		Request
TP04048	48x16x6	1xGM12V71	340		Request
TP04847	47x16x-	2CAT3306	485	88	250,000
+ TP05037	38x17x-	2xGM8V71	460	44	Request
TP06856	56x24x8	-x-x-	-	69	395,000
TP07000	55x20x-	2xGM12V71	680	68	Request
TP07248	49x21x8	3xGM8V71	720	98R	Offer
★ TP07610	100x24x5	2xCAT353	760	42	265,000
+ TP08009	50x22x7	2xCAT3408	730	82	Offer
TP10060	60x22x10	2xCAT3408D	1000	78	Request
TP10061	61x22x-	2xGM16V92	1000	80	Request
TP10062	61x22x-	2xCummins	1000	81	Request
TP10085	56x24x9	3xGM	1080	80	525,000
+ TP11060	60x17x9	2xCAT3406	1100	-	600,000
TP16585	85x26x9	1xEMD567	1650	51	150,000
TP17001	74x38x7	2xCAT	1750	80	790,000
★ TP20143	143x29x9	2xEMD12567	2000	45	295,000
> TP32144	106x34x10	3xFiat	3270	98	Request
TP37150	150x35x-	2xAlco	3720	49	105,000
TP38000	142x34x10	2xEMD16	3800	49	1,925,000
★ TP39120	120x38x8	2xEMD16645	3900	60	1,150,000

+ Located West Coast ★ Located East Coast > Foreign Flag

Details believed correct, not guaranteed. Offered subject to prior sale or charter.



Deck Barges

File	Dimensions	Remarks	Built	Price
★ DB02007	20x7x4	Sectional	-	6,500
★ DB02406	24x7x4	Sectional	-	6,500
★ DB03027	30x27x7	Sectional	-	21,500
★ DB04029	40x10x-	Sectional	-	Request
★ DB04055	40x12x5	Sectional	New	Quote
★ DB04528	45x28x4	Inland	-	21,500
★ DB04816	48x16x4	Propelled	-	32,000
> DB06027	60x25x8	Sectional	99	110,000
★ DB06030	60x30x7	Inland	-	31,500
> DB08030	80x30x-	Inland	-	Request
+ DB08134	81x34x9	Inland	-	31,500
★ DB08536	85x36x8	Inland	66	85,000
★ DB09030	90x30x9	Inland	-	42,500
> DB09139	92x39x9	Inland Spud	-	190,000
+ DB09632	96x32x8	Inland	-	52,500
+ DB10047	100x45x8	Inland	33	65,000
+ DB10229	102x29x12	Inland	44	Offer
+ DB10440	104x40x5	Inland - (2)	-	79,000
+ DB10447	104x47x8	Inland Work	60	240,000
+ DB10501	104x29x8	Inland	44	37,500
DB10931	110x30x7	Inland Spud	78	52,500
DB11024	110x30x7	Inland Spud	77	52,500
+ DB11036	110x34x-	Inland	-	Request
+ DB11043	110x30x8	Inland	70	79,000
+ DB11044	110x30x7	Inland	43	132,000
+ DB11063	110x32x-	Inland	-	50,000
> DB11245	112x45x8	Inland Spud	-	265,000
★ DB12020	120x40x11	Inland	62	127,500
DB12027	120x30x7	Inland	77	63,000
DB12028	120x30x7	Inland	79	52,500
★ DB12031	120x30x-	Inland	-	105,000
DB12037	120x30x7	Inland - (2)	92	125,000
★ DB12043	120x40x8	Inland	-	Request
> DB12048	120x44x-	Inland Spud	32	275,000
★ DB12053	120x38x11	Inland	60	120,000
> DB12055	120x35x-	Inland	-	118,000
★ DB12060	120x30x10	Inland	-	Request
★ DB12081	120x40x11	Inland	62	123,000
★ DB12091	120x60x9	Inland	45	105,000
+ DB12535	125x34x9	Inland	-	125,000
> DB13165	131x66x-	Inland	-	Request
> DB13503	135x35x-	Inland	-	185,000
★ DB13852	138x52x9	Inland	-	31,500
+ DB15023	150x42x11	Coastal	64	215,000
★ DB15040	150x40x10	Inland	-	Request
+ DB15043	150x42x14	ex-Ocean	68	225,000
+ DB15044	150x42x12	Inland	-	157,500
+ DB15051	150x48x10	Inland	67	Request
+ DB15053	150x50x8	Inland	01	Request

File	Dimensions	Remarks	Built	Price
+ DB15060	150x42x12	Inland	67	Request
> DB15090	150x90x20	Ocean - (2)	75	425,000
> DB15449	154x49x11	Ocean	74	Request
> DB15939	160x40x9	Ocean	96	170,000
> DB16041	151x40x11	Coastal	85	350,000
+ DB16043	160x40x8	Inland	01	Request
> DB16552	165x44x11	Inland Chip - (3)	-	125,000
> DB17644	175x44x13	Coastal	59	Request
> DB18031	180x56x12	Ocean - (2)	95	Request
> DB18032	180x50x10	Ocean	91	132,500
> DB18033	180x50x10	Ocean - (2)	91	132,500
+ DB18041	180x54x12	Ocean	80	790,000
+ DB18050	180x50x12	Inland	74	210,000
> DB18052	180x50x10	Ocean	00	Request
+ DB18059	180x54x13	Ocean	81	895,000
> DB18061	180x54x12	Ocean	72	315,000
> DB18067	180x50x10	Ocean - (4)	90	132,500
> DB18071	180x57x13	Ocean	-	Request
> DB18073	180x50x12	Ocean	96	Request
DB18076	180x54x12	Ocean Work	80	615,000
DB18077	180x54x12	Ocean	80	615,000
> DB18080	180x50x10	Ocean	97	240,000
+ DB18142	181x42x11	Inland	68	225,000
+ DB19001	190x50x12	Inland House	72	Charter
+ DB19251	192x52x13	Ocean	-	840,000
> DB20043	200x43x-	Inland	-	157,500
> DB20051	200x50x-	Inland	-	105,000
+ DB20066	200x52x15	Ocean	69	420,000
DB20554	206x54x18	Ocean	-	Request
> DB21059	210x56x12	Ocean	91	Request
DB21061	210x60x12	Ocean	New	Quote
> DB21067	210x60x12	Ocean - (3)	93	Request
> DB21349	213x49x11	Ocean	-	Request
> DB21450	214x49x11	Ocean	93	Request
★ DB21542	215x42x15	Inland	45	132,500
> DB22000	220x60x14	Ocean - (2)	97	298,000
> DB22043	220x43x14	Coastal	56	190,000
★ DB22049	220x49x12	Inland	-	236,500
DB22052	220x54x14	Ocean	92	895,000
> DB22062	220x60x14	Ocean	96	288,000
> DB22065	220x64x12	Ocean	88	Request
> DB22067	220x60x14	Ocean	97	300,000
+ DB22464	224x64x14	Ocean House	78	Request
+ DB23005	230x55x15	Inland	68	Request
+ DB23060	230x60x14	Ocean	New	Quote
> DB23069	230x60x14	Ocean	01	Request
+ DB23650	236x50x14	Ocean Subm	66	850,000
★ DB24005	240x72x16	Ocean	77	1,050,000
> DB24010	240x80x16	Ocean	89	525,000
> DB24064	240x64x14	Ocean	01	575,000
> DB24180	241x80x16	Ocean	82	Request
+ DB24261	242x60x16	Ocean - (2)	77	Request

+ Located West Coast ★ Located East Coast > Foreign Flag



Deck Barges Continued

File	Dimensions	Remarks	Built	Price
+ DB24454	244x54x14	ex-Ocean	64	420,000
> DB24663	246x63x18	Ocean	78	630,000
+ DB24848	248x48x12	Inland	54	420,000
★ DB24976	249x75x16	Ocean	76	Request
+ DB25028	250x72x15	Ocean	87	Request
DB25031	250x72x15	Ex-Ocean	82	Request
+ DB25050	250x50x13	Inland	60	200,000
> DB25070	250x70x16	Ocean	New	Quote
DB25073	250x72x15	Ocean - (2)	81	Request
> DB25085	250x80x16	Ocean	98	780,000
> DB25098	250x80x16	Ocean - (2)	99	840,000
+ DB25368	253x68x16	Ocean House	80	Request
DB26049	260x48x15	Inland	44	525,000
★ DB26053	260x48x15	Inland House	48	265,000
+ DB26056	260x48x15	Ex-Ocean	44	Request
DB26088	260x74x14	Ocean	75	Request
DB26452	264x50x10	Inland - (3)	76	Request
DB26860	268x60x19	Ocean	68	Request
+ DB26868	268x60x19	Ocean Freezer	69	1,350,000
> DB27070	270x70x16	Ocean	92	420,000
> DB27072	270x70x16	Ocean	00	Request
> DB27073	270x70x16	Ocean	New	Quote
> DB27077	270x70x14	Ocean Ramp	97	500,000
> DB27078	270x70x16	Ocean	94	Request
> DB28248	287x48x18	Inland	15	230,000
+ DB28278	282x78x18	Ocean	78	Request
> DB28290	282x90x18	Ocean	94	1,100,000
> DB29011	290x118x18	Ocean - (2)	98	Request
+ DB29991	299x90x19	Ex-Ocean	82	210,000
> DB30004	330x96x20	Ocean - (2)	New	Quote
> DB30009	300x90x20	Ocean	75	1,465,000
DB30013	300x90x19	Ocean	82	Request
> DB30015	300x90x20	Ocean - (2)	76	Request
> DB30026	300x90x20	Ocean	78	Request
> DB30034	300x90x20	Ocean	76	Request
> DB30076	300x76x18	Ocean	96	790,000
> DB30077	300x76x18	Ocean	97	870,000
> DB30080	300x80x18	Ocean	New	Quote
> DB30083	300x80x18	Ocean	01	1,050,000
> DB30090	300x90x18	Ocean	93	950,000
> DB30092	300x90x18	Ocean	94	Request
> DB30095	300x90x20	Ocean	84	1,050,000
> DB30097	300x100x25	Ocean	84	Request
DB30101	300x100x20	Ocean	99	Charter
> DB30104	300x90x20	Ocean	84	800,000
> DB30108	300x90x-	Ocean	77	Request
> DB30291	300x90x20	Ocean	77	1,195.00
+ DB30550	305x50x-	Inland	45	Offer
> DB31173	311x74x18	Ocean	New	Quote

Listings Updated Daily On Internet

File	Dimensions	Remarks	Built	Price
> DB31265	312x66x18	Ocean	76	Request
> DB31598	328x99x25	Ocean	82	Request
> DB32285	322x84x28	Ocean	55	630,000
> DB32883	328x82x24	Ocean	New	Quote
> DB32899	328x121x23	Ocean	75	Request
+ DB33076	330x76x18	Inland	63	685,000
+ DB33078	330x78x20	Ocean	82	Request
> DB33082	330x80x18	Ocean - (2)	96	1,770,000
> DB33097	330x96x20	Ocean - (2)	99	2,200,000
> DB33100	330x100x20	Ocean	01	Request
> DB33894	338x94x21	Ocean	77	630,000
> DB34631	347x105x20	Ex-Ocean	80	420,000
> DB35292	352x92x21	Ocean Ice Str.	75	Request
★ DB36640	366x40x11	Inland	-	157,500
> DB37696	376x96x22	Ocean	91	Request
> DB39302	394x131x25	Ocean	77	Request
> DB39880	399x80x25	Ocean	76	2,075,000
> DB40003	400x100x24	Ocean	75	1,900,000
> DB40007	400x120x25	Ocean	83	Request
★ DB40017	400x100x25	Ocean	76	Offer
DB40105	400x100x25	Ocean House	76	Request
> DB40590	405x90x20	Ocean	76	Request
> DB40655	407x56x-	Inland	92	Request
★ DB41710	417x105x20	Ocean Ro/Ro (2)	76	Offer
+ DB43857	437x56x28	Inland	-	Offer
DB46065	460x65x22	Ocean ITB	88	Request
> DB48500	482x105x28	Ocean Ice Str.	81	Request
DB56885	568x85x24	Ocean ITB	82	Charter
> DB60000	600x154x38	Ocean	78	Request

Derrick Barges

File	Dimensions	Remarks	Built	Price
+ DK00001	-	250T Crane	72	Request
+ DK03922	39x22x7	-	-	30,000
★ DK07530	75x30x5	40 Ton	-	Offer
+ DK07922	79x22x7	-	-	45,000
> DK08229	82x30x-	25 Ton	86	Request
+ DK09030	90x30x5	B.E. 30B	85	105,000
> DK09142	92x43x-	30 Ton	82	420,000
★ DK10040	100x40x9	Clyde 20T	62	315,000
★ DK10050	100x50x8	American R-20	-	Request
> DK10952	109x52x14	120 Ton	-	Offer
+ DK11054	110x52x10	120 Ton/Whirley	-	Request
★ DK11056	110x48x12	88B Pedestal	-	Request
> DK11233	113x34x9	Pedestal	72	Request
> DK11876	119x77x-	200 Ton	70	1,050,000
+ DK11943	119x43x9	-	-	210,000
> DK11961	120x61x10	32 Ton	82	Offer
+ DK12006	116x32x6	50T/Pedestal	-	Offer
★ DK12040	120x40x12	Inland	59	79,500

Ask for List of Sectional and Other Size Barges

Details believed correct, not guaranteed. Offered subject to prior sale or charter.



Derrick Barges Continued

File	Dimensions	Remarks	Built	Price
+ DK12044	120x44x9	50T/Whirley	43	450,000
★ DK12060	120x60x10	Inland	45	132,500
> DK12334	123x34x-	Pedestal 100T	58	Offer
> DK13262	132x62x9	100 Ton/Revolver	64	525,000
> DK13650	136x50x10	75 Ton	64	580,000
+ DK13948	139x48x8	-	94	Request
★ DK14050	140x50x11	-	75	295,000
+ DK14085	140x84x15	200 Ton	17	370,000
> DK14446	145x46x-	45 Ton	68	Request
> DK14465	144x65x9	100T/revolving	84	Request
> DK14855	148x56x11	150 Ton	83	Request
> DK15050	150x50x10	-	99	Request
> DK15053	150x50x10	-	99	Request
> DK15056	150x50x10	-	99	Request
> DK15166	151x66x15	250Ton Revolver	68	1,500,000
> DK15257	152x58x13	75 Ton	74	Request
> DK15970	159x70x14	Propelled	01	Request
★ DK16060	160x60x9	-	-	210,000
★ DK16063	160x60x9	-	-	210,000
> DK17050	170x50x9	Lima 150T	68	Request
> DK18072	180x72x12	350T/A-Frame	79	Request
> DK18462	184x62x-	350T/Sheerleg	75	Request
> DK21060	210x60x12	-	97	Request
> DK21576	215x76x15	302 Ton	74	Request
> DK24668	246x69x16	100T	80	Request
> DK24970	249x69x-	Clyde 275 Ton	67	1,750,000
> DK30101	301x100x25	3000T "A"	85	5,500,000
> DK35292	352x92x20	No Crane	75	1,500,000
> DK48716	488x164x26	1200T Revolver	01	Request

Tank Barges

File	Dimensions	BBL	Remarks	Built	Price
★ TB00001	57x8x-	-	Inland	-	26,500
★ TB00250	43x16x-	250	Inland	80	Request
★ TB00857	70x19x8	857	Inland	52	26,500
> TB01325	98x25x6	1325	Propelled	77	221,000
+ TB03510	109x23x-	3592	Inland	-	12,000
> TB04212	125x26x9	-	Propelled	99	315,000
TB05615	150x35x8	-	Inland	74	225,000
> TB08025	255x46x8	8020	Inland	94	Request
TB10002	232x35x11	10360	Inland	84	200,000
TB10012	123x50x12	10000	Inland	59	165,000
TB10019	196x35x-	10000	Inland	-	60,000
+ TB10225	250x50x18.5	10285	Ocean	66	Request
TB14019	195x50x14	14958	Inland	59	Offer
TB15024	240x40x11	15000	Inland	61	220,000
> TB16210	210x56x12	13000	Ocean	98	Request

File	Dimensions	BBL	Remarks	Built	Price
TB17321	215x54x13	17323	Inland	74	385,000
TB17322	228x54x13	17323	Inland	74	Request
> TB17950	180x50x11	19000	Coastal (2)	82	Request
> TB18871	210x59x-	18000	Ocean	89	900,000
★ TB21007	290x53x23	21000	Ex-Ocean	56	685,000
TB21029	290x50x11	21494	Inland	65	Offer
TB22229	295x54x13	22239	Inland	74	490,000
> TB22634	349x46x16	-	Coastal	00	1,365,000
TB24929	295x54x-	24978	Inland	74	550,000
> TB25002	-x-x-	25000	Propelled	89	Request
> TB25023	230x60x18	-	Ocean	01	Request
> TB26260	260x48x10	25000	Inland	60	Request
> TB27049	300x49x14	27324	Inland	58	Offer
> TB28025	260x55x17	-	Propelled	70	Request
TB28286	287x52x18	-	Ocean	73	Offer
★ TB29000	298x54x12	28870	Inland	75	690,000
★ TB29001	298x54x12	28858	Inland	75	730,000
TB30734	346x53x14	30760	LPG	67	Request
> TB30921	220x60x16	30921	Coastal	99	950,000
TB31270	270x72x-	-	Ocean	02	Request
+ TB37240	240x70x19	37000	Ocean	83	Request
TB52392	391x56x26	-	ITB	71	Request
> TB65000	328x87x22	65000	Ocean	New	2,200,000
★ TB99021	562x90x45	282,942	Ocean	56	Offer

Miscellaneous Barges

File	Dimensions	Remarks	Built	Price
> MB05016	50x16x5	Inland House	-	17,000
MB06428	64x28x5	Jack-Up	72	205,000
> MB06868	70x70x7	Jack-Up	85	1,200,000
> MB07529	76x30x-	Lift Boat	-	Request
> MB08066	80x60x7	Jack-Up	81	900,000
> MB08585	85x85x11	Jack-Up	-	2,300,000
> MB08730	87x30x7	Dredge Booster	-	Request
+ MB10428	110x28x11	Maintenance Barge	-	74,000
+ MB11135	106x34x11	Quarters - 30	45	Request
★ MB11531	106x34x6	Restaurant	-	70,000
MB12031	120x30x7	Quarters Barge	-	205,000
MB12033	120x33x11	Reefer Barge	-	375,000
> MB13165	131x66x10	Ocean Work	01	790,000
> MB13612	146x122x14	Jack-Up Quarters	83	Request
> MB14292	142x92x12	Jack-Up	72	Request
MB14531	145x31x9	Cement Barge	68	425,000
MB15032	150x32x9	Quarters - 60	-	750,000
+ MB15044	150x44x12	Quarters - 54	93	815,000
MB15910	160x100x-	Jack-Up	60	Offer
> MB15965	159x65x12	Ocean Work	-	Request
+ MB16050	160x50x12	Quarters - 28	67	600,000
> MB17990	179x90x13	Jack-Up	53	2,500,000
+ MB18038	180x38x-	Quarters	-	Offer

+ Located West Coast ★ Located East Coast > Foreign Flag



Miscellaneous Barges Continued

File	Dimensions	Remarks	Built	Price
+ MB18450	184x50x12	Inland Work	43	Request
> MB19688	197x89x16	Pile Driver	87	Request
> MB19773	197x74x16	Maintenance	88	Request
> MB20050	200x50x8	Inland House	86	Request
> MB20051	200x50x-	Quarters Barge	-	525,000
> MB20738	207x39x10	Quarters Barge	70	Request
MB20830	208x30x7	Quarters Barge	-	Request
> MB21365	213x65x-	Ocean Work	81	3,500,000
> MB22145	221x44x12	Inland Work	84	370,000
> MB22339	224x39x-	Quarters Barge	62	Request
> MB22587	225x87x15	Chip Processor	-	Request
> MB23668	237x69x-	Cable Barge	-	Request
> MB24282	243x82x16	Ocean Work	80	Request
★ MB24550	245x50x15	Inland House	-	150,000
> MB25560	246x60x27	Cable Layer	98	Request
★ MB26148	261x48x15	Quarters	-	685,000
MB26149	261x48x15	Quarters Barge	45	Offer
> MB27172	271x72x15	Ocean Work	77	Request
> MB29059	300x90x21	Ocean Work	76	5,500,000
> MB30090	300x90x20	Ocean Lay	75	6,000,000
> MB31984	325x85x20	Ocean Work	80	Request
> MB32825	328x252x32	Jack-Up Rig	-	Request
> MB33095	330x96x-	Ocean Work	01	Request
> MB33107	331x107x22	Ocean Work	95	6,500,000
> MB33669	337x70x18	Ocean Work	83	6,500,000
MB35061	350x60x22	Ocean Lay	58	Offer
★ MB36290	362x90x22	Quarters - 1100	-	Request
> MB36590	365x90x20	Ocean Work	75	Request
> MB36737	367x45x38	Quarters Barge	86	Request

Hopper Barges

File	Dimensions	Remarks	Built	Price
HB05025	50x25x-	Inland Dump	-	Request
HB06231	62x31x13	Lash	74	Request
> HB12537	126x36x13	Inland Dump	80	Request
★ HB14440	144x40x14	Inland Dump	54	26,500
★ HB14531	145x31x9	Inland Cement	68	Offer
★ HB14640	146x38x17	Inland	-	121,000
★ HB14646	146x38x18	Inland	-	158,000
> HB15280	152x80x11	Inland	95	Offer
★ HB17140	171x42x16	Inland Dump	62	185,000
★ HB17141	171x42x16	Inland Dump	62	210,000
★ HB17143	171x42x16	Inland Dump	62	265,000
★ HB17144	171x43x16	Inland Dump	-	52,500
★ HB18345	183x45x16	Dump Barge	-	52,500
★ HB18643	186x43x15	Ocean Dump	55	850,000
HB19537	195x35x11	Inland Cement	59	250,000

File	Dimensions	Remarks	Built	Price
HB19545	195x35x12	Inland Cement - (4)	69	80,000
★ HB19546	195x46x15	Inland Dump	59	52,500
HB19556	195x46x15	Inland Dump	59	158,000
HB19560	195x35x12	Inland - (2)	-	Request
HB19564	195x35x12	Inland	78	Offer
> HB19736	197x36x13	Dump Coastal	00	Request
HB20040	200x35x12	Inland	79	Request
> HB21337	213x37x-	Ocean	82	Offer
> HB24938	249x37x14	Inland	84	Request
> HB24939	249x37x13	Inland	83	Request
> HB25043	250x43x23	Inland Cement	09	160,000
HB25053	250x53x11	Inland Cement	67	250,000
★ HB30339	303x38x17	Inland	58	250,000
> HB34851	359x50x24	Ocean	61	840,000
> HB40175	333x75x24	Coastal	69	950,000
★ HB42081	420x80x32	Ocean	67	Request
> HB43081	430x80x29	Ocean	70	Request
HB45376	453x76x36	Ex-Ocean	79	900,000
> HB47578	475x75x35	Ex-Ocean	66	685,000

Supply Boats

File	Dimensions	Machinery	HP	Built	Price
SU13030	130x30x12	2xGM16V92	1200	82	Request
SU13031	130x30x12	2xCAT3412	1350	-	Request
> SU13832	138x32x15	2xGM16V149	2120 K	72	1,000,000
> SU14033	140x33x14	2xB&W	2000	81	1,050,000
> SU14034	140x33x14	2xB&W	1800	81	Request
> SU14739	147x39x18	2xEMD16645	6000	76	Request
SU15034	150x34x12	2xGM12V149	1400	65	550,000
> SU15236	152x36x13	4xGM12V71	1360	66	295,000
SU15532	150x32x13	2xEMD8645	1950	76	1,050,000
SU15738	157x38x14	2xCATD398	1700	81	1,000,000
> SU15739	147x39x18	2xEMD16645	6000	76	1,000,000
> SU16000	160x39x16	2xEMD12645	3000 K	69	Request
SU16038	157x38x14	2xCATD398	1700	81	1,000,000
> SU16340	166x41x15	2xDaihatsu	2600	80	Request
SU16501	165x36x12	2xCATD398	1700	77	Request
> SU16531	165x38x12	2xCATD398	1700	67	525,000
SU16548	165x38x13	2xGM16V149	1800	81	945,000
SU16614	166x38x13	2xGM16V149	1800	76	945,000
SU16617	166x38x13	2xGM16V149	2240	76	945,000
SU16619	166x38x13	2xGM16V149	1860	79	1,300,000
SU16621	166x38x12	2xCATD398	1700	77	1,050,000
SU16636	166x38x13	2xGM16V149	1800	80	Request
> SU16638	166x38x13	2xGM16V149	1860	79	Request
> SU16639	166x38x13	2xGM16V149	1860	80	Request
> SU16648	166x38x13	2xGM16V149	1860	79	790,000
SU16649	166x38x13	2xGM16V149	1860	80	945,000
+ SU16838	168x3x814	2xEMD12645	3000	77	Request
> SU17001	170x37x14	2xLister	2400 K	68	Request

Listings Updated Daily On Internet

+ Located West Coast ★ Located East Coast > Foreign Flag

Details believed correct, not guaranteed. Offered subject to prior sale or charter.



Supply Boats

File	Dimensions	Machinery	HP	Built	Price
> SU17004	171x38x15	2xEMD16567	3280	K 72	Request
> SU17009	171x38x15	2xEMD16567	3280	73	Request
SU17014	170x38x14	2xEMD12567	2400	71	1,000,000
> SU17039	170x39x17	2xDaihatsu	2480	85	Request
SU17040	180x40x14	2xCAT3516	3400	79	Request
> SU17103	171x38x14	2xEMD16567	3240	73	Offer
> SU17337	173x36x13	2xMWM	1900	72	Request
> SU17347	173x38x14	2xCAT3512	2350	-	945,000
> SU17437	174x37x15	2xIndustrie	2000	74	Request
> SU17442	174x38x18	2xIndustrie	2000	75	Request
SU17501	175x40x15	2xGM16V149	1800	82	1,900,000
SU17504	175x38x13	2xCATD399	2250	78	Request
> SU17536	175x37x13	2xMAK	3500	72	Request
SU17641	176x40x14	2xEMD12645	3000	82	Request
> SU17648	176x45x12	2xCAT3412	1248	97	Request
> SU17684	176x38x14	2xCAT3512	2400	82	945,000
> SU17939	180x38x15	2xB&W	2480	77	Request
> SU17940	179x40x14	2XSulzer	4320	K 79	Request
> SU18001	180x38x14	2xCATD399	2250	75	Request
> SU18003	180x40x15	2xGM	2560	75	Request
SU18006	180x38x14	2xCATD399	2250	78	945,000
> SU18022	180x40x14	2xEMD12645	3000	79	790,000
SU18029	180x40x14	2xCATD399	2250	78	945,000
> SU18050	180x40x14	2xCATD399	2250	79	945,000
SU18061	180x38x14	2xEMD16645	3900	75	945,000
> SU18065	180x38x14	2xEMD16567	3280	76	945,000
SU18068	180x38x14	2xGM16V149	2240	76	1,800,000
> SU18092	180x40x14	2xGM16V149	1800	81	Request
> SU18103	180x38x14	2xEMD12645	3000	74	945,000
> SU18119	180x40x16	2xAlco	4100	K 82	1,050,000
> SU18120	180x40x16	2xAlco	4100	K 82	1,260,000
> SU18138	182x38x15	2xB&W	2480	77	Request
> SU18142	180x38x14	2xEMD16567	3280	75	Request
> SU18244	182x45x17	2xMirrlees	2880	K 83	Request
> SU18430	185x38x14	2xCATD399	2250	79	Request
> SU18445	184x47x17	2xMWM	3500	74	1,050,000
SU18502	185x38x15	2xEMD16645	3900	70	Offer
> SU18506	185x38x16	2xEMD16645	3900	72	Request
> SU18507	185x39x15	2xLister	4000	K 73	Request
SU18510	185x40x14	2xCATD399	2250	82	Request
SU18540	185x40x14	2xCATD399	2250	82	Request
> SU18548	185x45x17	2xYanmar	3000	01	Request
> SU18560	185x38x15	2xEMD16645	3900	81	1,050,000
> SU18562	185x38x14	2xEMD16567	3200	82	945,000
SU18562	185x40x14	2xEMD12645	4300	79	945,000
SU18571	185x40x14	2xGM16V149	2200	82	945,000
SU18603	186x38x13	2xCAT3512	2350	82	945,000
> SU18642	186x43x15	2xDeutz	3500	K 77	945,000
> SU18710	187x38x15	2xEMD16567	3200	75	800,000

K = Kort

Z = Z-peller

File	Dimensions	Machinery	HP	Built	Price
> SU18738	187x38x15	2xEMD16567	3200	75	850,000
> SU18839	188x38x18	2xMAN	4600	76	1,260,000
> SU18845	188x40x16	2xEMD16645	4610	83	945,000
> SU18907	189x40x15	2xYanmar	2800	K 82	Request
> SU19053	190x45x18	2xYanmar	4000	02	Request
> SU19055	190x40x16	2xEMD12645	4300	79	1,050,000
SU19056	185x40x16	2xEMD16645	3900	K 78	945,000
> SU19058	190x40x14	2xEMD16645	3900	80	945,000
> SU19145	191x42x20	2xMAK	5300	74	Request
> SU19205	192x43x22	2xBergen	7200	K 84	Request
> SU19219	191x42x20	2xEMD12645	5600	K 75	Request
> SU19400	194x40x17	2xNohab	7040	K 74	Request
> SU19410	195x40x16	2xDaihatsu	5200	84	Request
> SU19443	194x43x16	2xWartsila	4810	K 83	Request
SU19447	194x40x15	2xEMD16645	4500	82	1,260,000
> SU19448	194x40x15	2xEMD16645	4500	83	1,260,000
> SU19541	195x41x17	2xMirrlees	6166	84	Request
> SU19543	195x42x16	2xAllen	5600	K 73	Request
> SU19548	195x42x16	2xRuston	6670	K 73	1,050,000
> SU19643	196x43x21	2xMAK	6000	76	1,050,000
> SU19645	196x43x18	None	-	99	1,500,000
> SU19705	196x43x21	2xMAK	7300	77	1,315,000
> SU19706	197x44x21	2xMAK	7300	76	1,315,000
> SU19749	197x43x20	2xSulzer	8640	K -	2,760,000
> SU20008	201x41x18	2xNohab	7040	K 76	Request
> SU20018	201x41x18	2xNohab	7040	K 76	2,075,000
> SU20044	201x43x21	2xMAK	7000	K 75	1,600,000
> SU20129	202x40x19	2xDeutz	7200	K 83	Request
> SU20200	202x38x15	2xYanmar	3520	84	Request
> SU20239	202x38x15	2xYanmar	3520	82	2,750,000
SU20640	206x40x15	2xAlco	5600	76	790,000
> SU20842	200x42x19	2xStork	7200	74	Request
> SU20943	210x44x20	2xStork	8000	K 74	Request
> SU20950	210x49x18	2xWartsila	8920	99	13,000,000
> SU20951	210x44x21	2xStork	8000	K 75	Request
> SU20954	209x73x16	2xStork	8000	K 76	Request
> SU20955	210x44x21	2xStork	8000	K 73	Request
> SU21002	205x45x18	2xEMD20645	7200	75	Request
> SU21003	210x45x18	2xEMD20645	7200	75	Request
> SU21007	210x73x17	2xDelaval	7500	K 77	Request
SU21400	214x42x16	2xEMD16645	6140	K 82	Request
> SU21442	214x42x18	2xMirrlees	6166	85	Request
> SU21546	215x45x23	2xWartsila	9700	83	Request
> SU21556	215x56x21	2xWartsila	7200	K 02	Request
> SU21802	218x46x20	2xCAT3608	7260	K 93	Request
SU21942	220x42x16	2xEMD16645	6140	82	Request
> SU22051	220x50x24	4xMAK	14400	K 82	Request
> SU24355	244x54x25	2xWartsila	8000	K 99	Request
> SU25345	256x47x24	2xMAK	9450	K 76	Request
> SU26600	266x54x24x	2xSulzer	7200	85	Request
> SU28859	289x58x33	4xStork	23200	83	Request
> SU29756	298x57x33	2xSulzer	16800	K 79	Charter

+ Located West Coast

★ Located East Coast

> Foreign Flag

Details believed correct, not guaranteed. Offered subject to prior sale or charter.



Utility Boats

File	Dimensions	Machinery	HP	Built	Price
+ UB02107	21x7x-	1xPerkins	-	K -	12,900
★ UB02500	25x-x-	2xEvinrude	310	84	23,600
> UB02507	25x8x2	1xFord	140	01	Request
+ UB04001	40x12x-	1xGM6-71	165	-	18,000
> UB04115	41x16x-	2xCAT3306	440	99	Offer
> UB04116	41x16x-	-	-	99	Offer
+ UB05000	50x-x-	2xGM6-71	330	-	Offer
+ UB05614	56x14x8	2xGM6-71	330	66	80,000
> UB06819	69x19x9	2xGM12V71	680	81	Request
+ UB08528	85x28x9	2xGM6-71	610	66	450,000
UB08533	85x33x11	2xGM12V92	900	81	405,000
> UB08627	86x27x14	2xRussky	2400	71	Request
> UB09126	91x26x10	2GM16V92	1200	K 79	840,000
> UB09521	95x21x-	1xB&W	800	75	160,000
UB09600	96x24x11	2xGM12V71	680	75	Request
UB10024	100x24x11	2xGM12V71	680	66	395,000
UB10324	103x24x10	2xGM16V71	910	78	475,000
> UB10325	103x25x10	2xCAT3412	1050	80	525,000
UB10426	104x26x-	-	1500	76	Request
UB10502	110x24x10	2xGM12V71	680	71	500,000
UB10526	105x26x11	2xGM16V92	1272	80	Request
> UB10728	107x28x12	2xYanmar	1500	K 77	242,500
UB11004	116x26x10	2xGM16V92	1238	79	950,000
> UB11006	110x26x10	2xGM16V92	1200	81	Request
UB11035	110x25x11	2xGM12V71	680	74	Request
UB11040	110x28x11	2xKelvin	1040	82	Request
> UB11043	110x26x11	2xGM16V71	910	82	525,000
> UB11044	110x28x10	2xCAT3412	1040	80	370,000
> UB11047	110x26x10	2xGM16V71	910	82	525,000
> UB11127	111x28x10	2xDeutz	1200	78	475,000
UB11226	112x26x-	2xGM16V71	910	64	Request
> UB11229	112x26x11	2xGM16V92	1200	81	315,000
> UB11231	112x26x11	2xGM16V92	1252	79	315,000
> UB11502	115x26x11	2xGM16V92	1200	81	525,000
UB11530	115x27x12	2xGM16V71	910	76	Request
UB11537	115x36x11	2xGM16V92	1200	77	685,000
UB11824	118x24x9	2xGM16V71	910	70	Request
> UB11826	118x26x11	2xGM16V92	1200	80	370,000
UB11927	120x27x-	2xGM16V92	1600	80	630,000
UB12001	120x26x-	2xGM16V71	910	79	Request
> UB12004	120x27x11	2xGM16V92	1200	81	Request
UB12026	120x26x-	2xGM16V71	910	79	720,000
> UB12029	120x28x12	2xCATD379	1130	80	450,000
UB12031	125x28x10	2xGM16V92	1200	81	Request
> UB12035	120x26x9	2xGM16V92	1200	81	630,000
> UB12036	120x28x8	2xGM16V92	1200	81	760,000
> UB12038	120x26x10	2xGM12V149	1400	79	420,000
UB12041	120x28x10	2xCATD379	1130	79	Request
> UB12043	120x27x11	2xGM16V92	1200	81	Request

Listings Updated Daily On Internet

File	Dimensions	Machinery	HP	Built	Price
UB12200	122x27x8	2xCATD353	850	65	1,050,000
UB12506	125x26x12	2xGM16V71	910	78	Request
> UB13031	130x30x12	2xGM16V92	1200	82	Request
UB13034	130x32x-	2xCummins	-	01	Request
> UB13232	131x32x13	2xMirrlees	2000	K 84	Request
> UB13518	135x19x12	2xMGO	2200	K 72	Request
> UB13732	138x33x10	3xVolvo	480	75	Request
UB14026	140x26x10	2xGM12V149	1400	78	Request

Crew Boats

File	Dimensions	Machinery	HP	Built	Price
CB02809	26x8x9	2xYamaha	450	65	Request
CB02912	29x10x-	2xGM6-71	228	77	28,000
CB02913	29x8x-	1xGM6-71	228	74	33,000
CB03112	31x10x6	1xGM6V53	320	-	Offer
CB03211	32x11x-	1xGM6-71	228	K 69	26,000
> CB03212	32x12x12	2xDiesel	420	01	270,000
CB03213	31x11x5	1xDetroit	240	79	Request
CB03217	32x10x-	1xGM6-71	228	72	33,000
CB03220	32x10x-	1xGM6-71	228	71	33,000
★ CB03512	35x12x6	2xVolvo	460	72	63,000
CB03813	38x13x-	2xGM6-71	330	78	132,500
+ CB03814	38x14x5	2xGM6V-71	360	54	75,000
CB03915	40x13x6	2xGM8V71	460	63	Request
CB04013	41x14x-	2xGM8V71	460	65	Request
★ CB04015	40x14x6	1xGM8V71	230	64	25,000
> CB04214	42x14x-	2xGM8V71	460	82	119,000
★ CB04219	42x12x-	2xGM8V71	460	-	120,000
CB04236	42x14x5	2xGM6-71	330	78	150,000
+ CB04314	43x14x6	2xGM8V71	460	77	128,000
CB04605	46x15x6	2xGM8V71	600	90	185,000
> CB04616	46x16x5	2xGM6V92	480	92	Request
★ CB04702	47x15x6	2xGM8V71	460	74	120,000
★ CB04717	47x15x7	2xGM8V92	600	81	205,000
> CB04811	48x15x6	2xGM12V71	1020	80	70,000
> CB04915	49x15x-	2xDaimler Benz	644	76	152,000
CB05015	50x15x6	2xMTU	1196	96	Offer
+ CB05161	61x18x8	1xCATD379	510	64	110,000
> CB05216	53x16x7	2xMTU	1068	94	860,000
> CB05217	52x16x-	2xGM	650	75	Offer
> CB05218	52x16x7	2xMTU	1068	96	990,000
> CB05515	55x15x-	2xGM12V71	680	82	200,000
> CB06414	64x15x-	2xSeania	400	80	Request
CB06516	65x16x8	2xGM12V71	1020	68	Request
+ CB06521	65x18x6	2xGM6-71	360	69	135,000
> CB06523	65x18x7	2xGM12V71	1000	76	175,000
CB06533	65x18x9	2xGM12V71	960	70	225,000
+ CB07534	78x34x9	4xLugger	2432	97	750,000
> CB07617	76x17x9	2xMWM	800	70	Offer
> CB07921	79x21x10	1xLister	335	70	Offer

+ Located West Coast ★ Located East Coast > Foreign Flag



Crew Boats Continued

File	Dimensions	Machinery	HP	Built	Price
CB08002	80x17x9	2xGM16V71	910	76	275,000
> CB08118	81x18x9	2xMTU	1780	83	Request
> CB08219	82x19x-	2xMAN	2000	98	Request
> CB08221	82x21x-	2xGM12V92	1420	94	Request
> CB08819	88x19x12	2xGM16V149	2580	82	Request
> CB09003	90x21x7	3xGM12V71	1530	72	Request
CB09020	90x20x9	2xGM12V71T	1850	73	315,000
CB09021	90x21x9	3xGM12V71	1530	73	Request
> CB09725	98x26x8	2xGM16V71	910	80	Request
★ CB10000	100x-x-	2xGM12V149	1400	69	Request
CB10009	100x24x10	2xGM12V71TI	1530	78	550,000
> CB10020	100x21x10	3xGM16V149	1800	79	160,000
CB10021	100x22x10	None	-	76	210,000
> CB10027	100x22x9	2xGM12V71TI	1080	74	315,000
> CB10031	99x22x6	3xGM12V71	1530	77	625,000
CB10048	100x21x9	3xGM12V71	1530	77	Request
> CB10222	102x22x9	3xGM12V71	1530	92	Request
> CB10508	105x24x10	3xGM12V71TI	1530	81	710,000
> CB10921	109x21x10	4xGM12V71	2600	80	Request
> CB10926	110x26x-	3xGM12V71	2090	83	Request
★ CB11012	110x22x9	3xGM16V92	2820	76	475,000
> CB11013	110x22x10	3xGM16V92	2820	75	450,000
CB11016	110x25x8	4xGM12V71	2040	76	Request
> CB11046	110x24x10	4xGM12V71	2040	81	Request
CB11055	110x39x-	2xGM16V149	3200	82	650,000
CB11057	110x22x10	3xCummins	1650	89	1,250,000
> CB11058	110x24x10	4xGM12V71	2040	82	Request
> CB11059	110x24x10	4xGM12V71	2040	80	Request
CB11061	110x24x9	3xGM16V92	2820	80	475,000
> CB11423	115x24x-	3xMTU	2400	81	Request
> CB11924	119x25x-	4xMAN	4000	98	Request
CB12028	120x24x9	4xGM12V71	2040	80	Request
> CB12035	120x24x11	4xGM12V71	2040	83	Request
CB12525	125x25x11	4xCummins	2600	85	Request
> CB13532	135x26x13	2GM16V92	1200	92	1,415,000

Landing Crafts

File	Dimensions	Machinery	HP	Built	Price
+ LC05000	50x-x-	2xGM671	-	-	63,500
> LC05015	50x14x-	2xDorman	500	68	31,500
+ LC05618	56x14x-	2xGM8V71	460 K	78	28,500
+ LC05619	56x14x6	2xGM6V71	330	65	143,000
+ LC06014	60x14x-	2xGM6-71	330	66	85,000
+ LC07021	70x21	4xGM6-71	660	56	99,000
+ LC07221	72x21x3	2xGM12V71	680	-	175,000
+ LC07400	74x-x-	4xGM6-71	720	-	145,000
+ LC07421	74x21x-	4xGM6-71	660	54	52,500

K = Kort

Z = Z-peller

File	Dimensions	Machinery	HP	Built	Price
> LC09124	91x24x6	2xGM12V71	1020	80	255,000
> LC10424	105x24x6	2xCAT3306	470	82	Request
> LC11024	110x24x-	2xYanmar	300	95	Request
> LC11026	110x26x-	2xYanmar	330	93	Request
> LC11325	113x25x9	1xB&W	600	70	160,000
> LC11436	114x36x-	2xMWM	820	78	210,000
> LC12326	124x26x6	2xMitsubishi	480	95	390,000
> LC12729	127x29x9	2xCummins	850	90	630,000
> LC13230	122x30x15	2xDeutz	598	81	315,000
+ LC13538	135x38x7	3xCAT3406	975	85	Request
> LC13639	136x39x10	3xCAT	645	91	950,000
> LC13640	136x39x10	2xDeutz	750	91	950,000
> LC13742	138x43x11	2xMatsui	800	90	590,000
> LC14335	144x35x9	2xYanmar	480	94	1,260,000
> LC15735	157x35x10	2xCAT3412	1230	00	1,570,000
> LC16033	169x33x9	2xGM16V71	900	80	Request
> LC16344	164x45x-	2xVolvo	320	65	475,000
> LC16435	164x35x8	2xYanmar	650	99	950,000
> LC16436	164x35x8	2xCummins	700	94	775,000
> LC16439	148x39x10	2xCAT3408	730	82	1,000,000
> LC16440	164x39x-	2xGM	730	81	685,000
> LC16833	168x33x-	2xMitsubishi	1580	89	Request
> LC16835	168x35x9	2xCummins	1000	68	470,000
> LC17034	169x34x8	2xCummins	850	71	365,000
> LC17236	172x36x8	2xCAT3412	900	83	Request
> LC18033	180x33x12	2xMTU	1700	99	Request
> LC18535	185x35x8	2xCAT3406	800	97	600,000
> LC19036	190x37x17	2xB&W	3720	83	Request
> LC19037	190x36x17	2xB&W	3720	-	Request
> LC19039	190x38x14	2xCAT3412	1500	00	2,500,000
> LC20138	207x38x11	2xCAT3412	1362	92	890,000
> LC20649	206x48x-	2xCAT3412	1342	95	Request
> LC20945	209x46x14	2xCAT3412	1440	-	Request
> LC20949	209x49x13	2xMWM	1341	00	Request
> LC23352	233x52x16	2xCAT3412	1340	96	2,050,000
> LC25844	258x45x28	2xCATD399	2000	69	Request
> LC26752	267x51x16	3xCATD398	2550	70	Request
> LC26754	267x51x-	3xCAT	2295	70	Request
> LC27862	279x62x10	2xCummins	1200	98	800,000

Research, Dive & Rescue

File	Dimensions	Machinery	HP	Built	Price
RV05816	58x16x5	2xCummins	600	95	480,000
RV06318	63x18x6	2xMAK	1100	96	540,000
RV06319	63x18x6	2xDaytona	1150	96	200,000
RV06320	63x18x6	2xMAK	1100	96	690,000
★ RV06321	64x19x-	2xGM8V92	600	59	200,000
RV06519	65x18x6	2xMAK	1100	96	690,000
★ RV09421	94x21x12	4xGM12V71	1440	68	Request
> RV09600	96X24X12	1XCAT3408	365	78	550,000

+ Located West Coast

★ Located East Coast

> Foreign Flag

Details believed correct, not guaranteed. Offered subject to prior sale or charter.

Research, Dive & Rescue

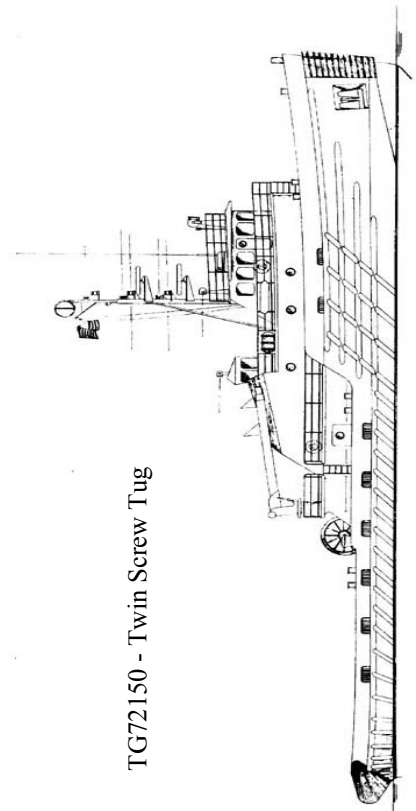
File	Dimensions	Machinery	HP	Built	Price
> RV09626	96x26x-	2xMAN	549	82	Request
> RV10538	160x39x7	2xGM	1650	81	Request
+ RV10600	106x26x13	1xCATD398	850	84	525,000
> RV11543	114x43x-	2xKelvin	880	84	1,300,000
> RV12001	120x36x8	2xGM12V71	680	82	Request
> RV12827	128x28x11	2xYanmar	2200 K	82	800,000
> RV13425	134x25x8	1xMWM	193	55	Offer
> RV13429	134x29x14	2xCATD398	1700 K	81	1,500,000
> RV13729	137x30x13	1xWichmann	883	71	Request
RV14336	143x36x10	2xCAT3412	1875	82	Request
RV15034	150x34x16	2xCATD398	1700	82	Request
> RV15035	150x32x10	2xGM12V149	1340	82	Request
RV15037	150x36x13	2xCATD398	1800	65	1,050,000
> RV15278	152x28x13	2xGM16V71	910	69	790,000
RV15637	156x38x13	2xCAT399	2250	82	685,000
> RV16238	190x37x19	4xLister	2400	68	Request
RV16241	163x41x14	2xCAT398B	1650	83	840,000
> RV17332	177x32x13	2xEMD12567	2460	66	Request
★ RV17510	176x38x13	2xCATD398B	1700	77	Request
> RV17601	155x33x-	1xDeutz	990 K	66	485,000
RV17838	178x38x15	2xLister	2400	70	400,000
> RV18445	184x44x12	2xGM16V92	1232	83	Request
> RV18545	185x45x17	2xRuston	5300 K	72	Request
> RV19329	193x29x15	2xMitsubishi	1200	57	500,000
> RV19417	194x40x17	2xCAT3606	4800	74	Request
RV19420	193x43x20	2XAlpha	3100	78	Request
> RV19430	195x30x23	1xDeutz	1500	47	500,000
> RV19639	195x38x19	2xMirlees	1300	80	Request
> RV19744	197x44x16	2xCAT3512	2500	New	Quote
> RV19840	197x40x17	2xEMD12645	3000 K	81	Request
RV21014	210x40x14	2xCAT3516	3000	82	Request
> RV21035	210x33x23	1xMAK	1750	64	1,050,000
RV21041	214x40x14	2xEMD12645	3000 K	92	Request
RV21051	210x50x13	2xSulzer	1520	86	Request
RV22046	220x46x16	2xCAT3516	3000	84	Request
> RV22343	224x44x23	3xPolar	3600 K	71	3,250,000
> RV22538	226x39x20	1xDeutz	2000	99R	2,000,000
RV22542	220x42x15	2xCAT3516	3100	85	Request
> RV23439	234x40x21	4xFairbanks	10560	88R	Offer
> RV23455	244x55x25	2xBergen	5230	91	Request
> RV24939	249x39x18	1xMAN	2110	65	2,500,000
RV26142	261x42x19	2xEMD12645	4300	74	Request
> RV26759	267x59x23	2xNohab	5300	82	Request
RV27256	272x56x-	2xBergen	6500	93	Request
RV27752	277x53x23	4xHedemora	7200	75	Request
RV27945	279x45x19	2xEMD12645	3000 K	01	Request
> RV32658	326x58x19	2xDaihatsu	5600	78	Request
> RV36760	367x60x38	2xPielstick	8000	73	Request
> RV42757	427x57x-	1xB&W	6100	81	Request
> RV52172	522x74x40	2xSulzer	15600	86	Request
> RV59088	591x89x55	1xPielstick	16600	88	Request

Ask For Details On Other Categories
Published Listings Only A Portion Of Those Available
Listings Updated Daily On Internet

MARCON INTERNATIONAL, INC.
P.O. Box 1170, 9 NW Front Street
Coupeville, Washington 98239

Address Service Requested

Presorted Standard
U.S. Postage
PAID
Coupeville, WA 98239
Permit No. 43



TG72150 - Twin Screw Tug