



# Marcon International, Inc. NEWSLETTER

## Spring 2002

Phone: (360) 678-8880  
Telex: 4931464  
Website: www.marcon.com

Fax: (360) 678-8890  
Email: info@marcon.com

**\$20.00 U.S., Canada & Mexico: One Year**  
**\$25.00 Other Countries: One Year**

### Check out our Charter Services.

- Tugboats pg. 2-4
- Push Boats pg. 4
- Deck Barges pg. 5-6
- Derrick Barges pg. 6-7
- Tank Barges pg. 7
- Misc. Barges pg. 7-8
- Hopper Barges pg. 8
- Supply Boats pg. 8-10
- Utility Boats pg. 10
- Crew Boats pg. 10-11
- Landing Crafts pg. 11
- Research, Dive pg. 12

More extensive listings of Vessels and Barges, including photos, surveys, drawings, etc., on website at [www.marcon.com](http://www.marcon.com)

Past newsletters can be found on the website in .pdf format.

### SALVAGE CONTRACTS: Why Terms Matter

Marine salvage is a business. Commercial salvors are among the most pragmatic of business people and practice their trade knowing that it entails substantial investment, sustained readiness and acceptance of risk on the job. Salvage is an unforgiving business that rewards fortitude, perseverance and ingenuity but also penalizes those who fail to negotiate a contract that reflects the realities of the work demanded. When salvors take on a response, they do so with the expectation that they will be able to perform their specialized services in anticipation of a fair payment. Characteristically, salvors are also independent and self-reliant contractors. They develop their own plans and rely on their own expertise in tackling evolving problems.

At its simplest, all business is quid pro quo, literally "this for that", the exchange of goods or services for some remuneration. Delivery of the "quid" presupposes exchange of the "quo" thereby evidencing the satisfaction of both parties to the agreement. Usually the "quid" and the "quo" are agreed in advance defining a deal between the parties and essentially constituting the basis of a contract. Contracts clarify "terms" describing the "quid", the "quo" and establish conditions for how the one begets the other. Parties signing the contract presume each other's compliance. The devil resides in details concerning control such as management control, change orders, operational plans, projected schedules, contingent liabilities and final payments.

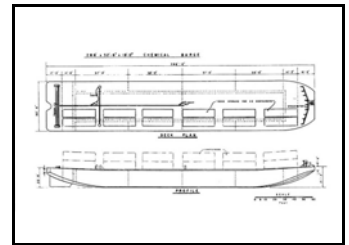
Most traditionally, salvors are encouraged to pursue the given task aggressively for a reward to be determined after the delivery with the understanding that no delivery meant no reward. Unique to salvage, the renowned "no cure no pay" may be the most poignant term found in any services contract. As such, it may also be the starkest illustration of "Why Terms Matter".

By: Bob Umbdenstock  
Extreme Marine Services, Inc.  
blakbell@earthlink.net

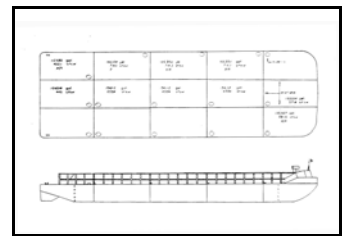
**Complete article at [www.marcon.com](http://www.marcon.com)**

We are always looking for papers or articles of interest to our readers.

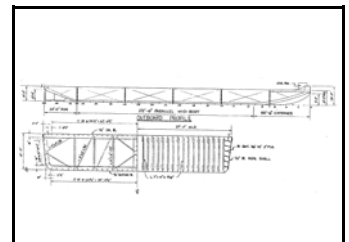
### Featured Vessels



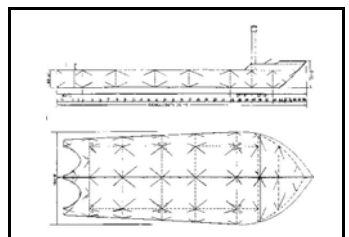
TB28286



DB24976



DB26088



DB31099



### Vessels for Sale and Charter Tug Boats

| File      | Dimensions | Machinery  | HP        | Built | Price   |         |
|-----------|------------|------------|-----------|-------|---------|---------|
| + TG01822 | 22x9x-     | 1xGM6-71   | 165       | -     | 36,500  |         |
| + TG02051 | 50x14x-    | 1xBuda     | 200       | 35    | 35,000  |         |
| ★ TG02052 | 50x15x6    | 1xGM6-71   | 174       | 41    | 55,000  |         |
| ★ TG02310 | 26x10x-    | 1xGM8V71   | 230       | 87    | 37,000  |         |
| + TG02450 | 49x15x6    | 2xGM8V71   | 240       | 79    | 50,000  |         |
| + TG03357 | 57x14x6    | 2xGM6-71   | 330       | 51    | 79,000  |         |
| + TG03540 | 40x11x6    | 1xCummins  | 225       | 58    | 37,500  |         |
| ★ TG03552 | 52x14x6    | 1xGM12V71  | 340       | K 60  | 157,500 |         |
|           | TG03642    | 42x13x8    | 2xGM6-71  | 330   | 57      | 79,000  |
| + TG03648 | 48x15x-    | 1xGM8V71   | 365       | -     | 60,000  |         |
| + TG04007 | 42x14x7    | 1xMurphy   | 350       | 86    | 110,000 |         |
| ★ TG04042 | 42x13x8    | 2xGM6-71   | 330       | 57    | 79,000  |         |
|           | TG04047    | 48x16x7    | 2xGM6-71  | 330   | 76      | 150,000 |
| + TG04550 | 50x13x-    | 2xGM6-110  | 450       | 55    | 105,000 |         |
| > TG05050 | 50x16x-    | 2xCAT3412  | 504       | 82    | Offer   |         |
| > TG05053 | 52x14x-    | 1xCAT      | 500       | 76    | Request |         |
|           | TG05054    | 52x16x-    | 2xCummins | 500   | 84      | Request |
| + TG05060 | 56x14x8    | 2xGM8V71   | 460       | 00    | 79,000  |         |
| + TG05065 | 65x17x6    | 1xGM16V71  | 455       | 50    | 75,000  |         |
| > TG06055 | 57x20x-    | 1xCummins  | 660       | 71    | 125,000 |         |
| > TG06083 | 80x20x10   | 1xGM12V149 | 940       | 45    | Request |         |
|           | TG06800    | 65x22x9    | 2xGM12V71 | 680   | 71      | Request |
|           | TG06818    | 56x18x-    | 2xGM12V71 | 680   | 78      | 375,000 |
|           | TG06867    | 65x22x9    | 2xGM12V71 | 680   | 69      | Request |
| > TG07020 | 71x20x10   | 2xGM12V71  | 680       | 62    | Request |         |
| > TG07021 | 68x18x10   | 1xCATD348  | 725       | 45    | 75,000  |         |
| > TG07039 | 39x13x8    | 1xMercedes | 750       | 91    | Request |         |
| > TG07070 | 66x20x9    | 2xCummins  | 1000      | 01    | Request |         |
| > TG07365 | 66x20x10   | 2xCAT3408  | 730       | 79    | 63,000  |         |
| > TG07573 | 73x15x8    | 1x-        | 750       | -     | 52,500  |         |
| > TG07661 | 61x17x-    | 2xGM8V92   | 600       | -     | 232,000 |         |
| > TG07664 | 64x20x9    | 4xGM6-71   | 660       | 1895  | 45,000  |         |
| > TG08014 | 61x17x7    | 2xGM12V71  | 680       | 92R   | 170,000 |         |
| ★ TG08023 | 81x23x9    | 1xEMD8567  | 900       | 43    | 185,000 |         |
| > TG08053 | 53x16x-    | 1xCATD398  | 765       | K 75  | Request |         |
| > TG08078 | 76x22x9    | 2xCAT3408  | 800       | K 96  | 395,000 |         |
| + TG08257 | 57x16x6    | 3xGM6-110  | 825       | K 56  | 350,000 |         |
| ★ TG08568 | 66x18x9    | 1xCATD398  | 850       | K 42  | Request |         |
| > TG08654 | 54x17x8    | 2xCAT3408  | 866       | K 88  | Request |         |
| > TG08974 | 74x22x10   | 1xDeutz    | 890       | 68    | Request |         |
| > TG08988 | 89x20x-    | 1xCAT      | 890       | 66    | 210,000 |         |
| + TG09063 | 63x17x9    | 1xCATD398  | 850       | K 41  | 70,000  |         |
| ★ TG09065 | 65x22x8    | 2xGM12V71  | 680       | 83    | Request |         |
| > TG09080 | 75x23x9    | 2xCAT3408  | 940       | K 98  | Request |         |
| > TG09086 | 85x20x10   | 1xB&W      | 880       | 56    | 160,000 |         |

Listings Updated Daily On Internet

| File      | Dimensions | Machinery   | HP         | Built | Price   |         |
|-----------|------------|-------------|------------|-------|---------|---------|
| > TG09087 | 86x25x14   | 1xPolar     | 900        | K 69  | Request |         |
| > TG09088 | 88x26x-    | 1xFairbanks | 900        | 62    | 325,000 |         |
| > TG09101 | 101x28x6   | 2xGM16V71   | 926        | 56    | 130,000 |         |
| > TG09363 | 64x19x9    | 1xDeutz     | 930        | 63    | Request |         |
| > TG09471 | 71x22x10   | 2xCAT3408   | 940        | 92    | 298,000 |         |
| + TG09556 | 56x14x8    | 2xCAT3408   | 950        | 44    | 200,000 |         |
| + TG10013 | 100x26x13  | 1xCATD399   | 1125       | 44    | Request |         |
| + TG10016 | 94x25x12   | 1xE'prise   | 1000       | 42    | 175,000 |         |
| > TG10067 | 65x18x-    | 2xGM12V71T  | 1000       | 41    | Request |         |
| + TG10073 | 73x21x12   | 1xCummins   | 1050       | 52    | Request |         |
| > TG10091 | 75x22x11   | 2xCummins   | 1020       | 01    | Request |         |
| > TG10093 | 92x26x-    | 1xMAN       | 1000       | K 59  | 240,000 |         |
| > TG10099 | 100x25x14  | 1xDeutz     | 1000       | K 60  | 79,000  |         |
| > TG10102 | 99x25x13   | 2xLister    | 1000       | 57    | Request |         |
| + TG10111 | 100x25x-   | 2xCummins   | 1000       | 45    | 210,000 |         |
| > TG10876 | 76x23x10   | 2xCAT3412   | 1080       | 94    | 328,000 |         |
| > TG10892 | 93x23x13   | 1xMWM       | 1080       | 56    | 132,500 |         |
| + TG11000 | 71x21x9    | 2xCATD379   | 1130       | K 61  | 132,500 |         |
| > TG11013 | 85x22x11   | 1xCATD399   | 1125       | K 56  | 210,000 |         |
| + TG11017 | 65x17x9    | 2xCATD379   | 1130       | 61    | 350,000 |         |
| > TG11077 | 78x24x11   | 2xDeutz     | 1128       | 77    | Request |         |
| > TG11078 | 77x24x10   | 2xYanmar    | 1100       | 96    | Request |         |
| > TG11079 | 86x25x-    | 2xYanmar    | 1180       | 95    | Request |         |
| > TG11082 | 82x24x11   | 2xYanmar    | 1100       | 83    | 380,000 |         |
| + TG12000 | 91x25x10   | 1xCATD399   | 1125       | 42    | Request |         |
|           | TG12002    | 97x25x14    | 1xEMD12567 | 1200  | 52      | Request |
|           | TG12012    | 75x25x-     | 2xGM16V92  | 1200  | 92      | Request |
| + TG12024 | 85x24x10   | 1xEMD12645  | 1800       | 43    | Request |         |
| > TG12063 | 69x22x9    | 2xCATD397   | 1000       | 56    | 275,000 |         |
| + TG12069 | 75x24x7    | 2xGM16V92   | 1200       | 80    | Request |         |
| > TG12080 | 78x25x-    | 2xCummins   | 1200       | 97    | Request |         |
| > TG12086 | 78x21x-    | 1xNohab     | 1200       | 28    | Request |         |
|           | TG12109    | 105x25x13   | 1xCATD399  | 1125  | 42      | 105,000 |
|           | TG12111    | 107x27x15   | 1x-        | 1200  | 53      | Request |
| > TG12113 | 77x25x10   | 2xYanmar    | 1280       | 98    | Request |         |
| + TG12115 | 107x27x14  | 1xFairbanks | 1200       | 54    | 60,000  |         |
| > TG12118 | 77x25x10   | 2xYanmar    | 1280       | 96    | Request |         |
| > TG12119 | 103x28x-   | 1xRuston    | 1270       | 58    | Request |         |
| > TG12135 | 150x33x16  | 2xRussky    | 1200       | 60    | Request |         |
| > TG12889 | 89x26x13   | 2xSulzer    | 2100       | 76    | 350,000 |         |
| > TG13024 | 85x24x11   | 2xGM12V71   | 1020       | 67    | 420,000 |         |
| + TG13069 | 73x24x10   | 2xGM16V92   | 1200       | K 79  | Request |         |
| > TG13071 | 71x22x-    | 1xWichmann  | 1320       | 17    | 130,000 |         |
| > TG13076 | 76x23x10   | 2xCAT3412   | 1342       | 97    | Request |         |
| > TG13087 | 85x25x12   | 1xDeutz     | 1320       | K 69  | Request |         |
| > TG13101 | 94x26x12   | 2xLister    | 1320       | 61    | Request |         |
| > TG13102 | 102x23x-   | 1xRuston    | 1360       | K 67  | 95,000  |         |
| > TG13107 | 106x28x13  | 1xPolar     | 1364       | 58    | Request |         |
| > TG13108 | 107x28x-   | 1xMWM       | 1300       | 64    | 122,500 |         |
| + TG13116 | 117x24x11  | 2xCAT3412   | 1250       | 26    | 175,000 |         |
| > TG13297 | 98x30x15   | 2xLister    | 1320       | 57    | Request |         |
| > TG13483 | 84x25x10   | 2xCAT3412   | 1342       | K 97  | 394,000 |         |

K = Kort

Z = Z-peller

Details believed correct, not guaranteed. Offered subject to prior sale or charter.



### Tug Boats Continued

| File      | Dimensions | Machinery   | HP     | Built | Price   |
|-----------|------------|-------------|--------|-------|---------|
| > TG14024 | 80x24x10   | 2xGM12V149  | 1400   | 82    | Request |
| > TG14083 | 84x23x11   | 1xDeutz     | 1360   | 62    | 325,000 |
| > TG14088 | 89x24x12   | 2xStork     | 1320   | 71    | Request |
| + TG15002 | 87x24x13   | 1xEMD12645  | 1500 K | 43    | 350,000 |
| > TG15005 | 104x23x11  | 1xMAK       | 1500 K | 53    | 315,000 |
| + TG15093 | 93x24x13   | 1xEMD12645  | 1500 K | 57    | Request |
| > TG15107 | 100x26x-   | 1xRuston    | 1465 K | 65    | 145,000 |
| > TG15108 | 92x23x10   | 1xDeutz     | 1500 K | -     | Request |
| > TG16030 | 80x21x-    | 2xCummins   | 1600 K | 01    | 945,000 |
| > TG16104 | 100x31x11  | 1xDeutz     | 1578 K | 64    | Request |
| > TG16108 | 101x29x16  | 1xNohab     | 1660 K | 77    | Request |
| + TG16113 | 112x25x16  | 1xEMD16645  | 1680   | 41    | Request |
| TG17005   | 106x27x14  | 1xGM16278   | 1750   | 57    | Request |
| > TG17090 | 85x26x13   | 2xCummins   | 1700   | 01    | Request |
| > TG17099 | 85x30x13   | 2xSacm      | 1789 Z | 93    | Request |
| + TG17115 | 107x27x16  | 1xCAT3516   | 1700   | 56    | Request |
| > TG17118 | 128x22x15  | 1xEMD16567  | 1750 K | -     | Request |
| > TG18008 | 95x24x11   | 2xGM16V149  | 1800   | 65    | 240,000 |
| > TG18018 | 108x30x-   | 2xDeutz     | 1800   | 68    | Request |
| + TG18070 | 75x24x12   | 3xGM16V92   | 1800   | 75    | 650,000 |
| > TG18091 | 86x26x-    | 2xCAT3508   | 1810   | 95    | Request |
| > TG18136 | 150x33x20  | 2xGM16V149  | 2400   | 44    | 895,000 |
| > TG19085 | 85x20x9    | 2xGM12V149  | 1880   | - R   | 550,000 |
| > TG19173 | 174x30x13  | 2xDaihatsu  | 1900 Z | 72    | Request |
| > TG19445 | 56x24x-    | 2xCAT3512   | 1940 Z | 00    | Request |
| > TG20060 | 60x22x10   | 2xCAT3508   | 2000   | 01    | Request |
| + TG20076 | 76x26x10   | 2xCAT3508   | 2000   | 00    | Request |
| > TG20082 | 89x26x12   | 2xNiigata   | 2000   | 82    | 265,000 |
| TG20092   | 90x32x13   | 2xCAT3508   | 2000 K | 98    | Charter |
| > TG20096 | 96x28x15   | 2xStork     | 2000   | 82    | Request |
| > TG20105 | 103x28x14  | 1xNohab     | 2040   | 84    | Request |
| > TG20118 | 95x30x14   | 2xWartsila  | 2000   | 98    | Request |
| > TG20122 | 122x29x15  | 2xDeutz     | 2200 K | 69    | Request |
| TG20125   | 125x28x17  | 1xE'prise   | 2000   | 57    | Request |
| TG20127   | 108x29x14  | 1xFairbanks | 2000   | 67    | Request |
| > TG20129 | 94x28x-    | 2xCummins   | 2000 K | 99    | Request |
| + TG21001 | 99x25x14   | 1xEMD12645  | 2150   | 52    | 300,000 |
| + TG21006 | 98x25x13   | 1xEMD12645  | 2150   | 56    | 300,000 |
| > TG21098 | 98x30x14   | 2xCAT3512   | 2100 K | 93    | 995,000 |
| + TG21101 | 101x27x13  | 1xEMD12645  | 2150   | 55    | Request |
| > TG21998 | 98x22x16   | 1xRuston    | 2190 K | 72    | Request |
| > TG22003 | 94x29x-    | 2xCATD399   | 2250 K | 80    | Request |
| > TG22112 | 110x32x16  | 2xCATD399   | 2250   | 70    | Request |
| ★ TG22121 | 121x32x17  | 1xEMD16645  | 2200   | 65    | Charter |
| ★ TG22122 | 110x32x16  | 1xEMD16645  | 2200   | 65    | Request |
| ★ TG22123 | 122x32x17  | 1xEMD16645  | 2200   | 65    | 750,000 |
| > TG22585 | 85x25x12   | 2xCATD399   | 2250 K | 96    | Request |
| > TG22595 | 96x28x14   | 2xCrepelle  | 2250   | 77    | Request |
| > TG24007 | 93x29x-    | 2xStork     | 2400 K | 76    | Request |

| File      | Dimensions | Machinery   | HP     | Built | Price     |
|-----------|------------|-------------|--------|-------|-----------|
| + TG24094 | 94x25x-    | 2xGM12V149  | 2400   | 44    | 120,000   |
| > TG24109 | 95x30x14   | 2xYanmar    | 2400 K | 01    | 1,500,000 |
| > TG24110 | 95x28x13   | 2xNiigata   | 2400 Z | 72    | 275,000   |
| > TG24120 | 105x31x15  | 2xYanmar    | 2400   | 94    | 1,500,000 |
| > TG24121 | 95x30x14   | 2xCAT3512   | 2400   | 00    | Request   |
| TG24123   | 103x25x11  | 1xEMD16645  | 1950   | 56    | 100,000   |
| > TG24130 | 105x30x13  | 2xNiigata   | 2400 Z | 71    | 275,000   |
| > TG24134 | 94x28x13   | 2xCummins   | 2400 Z | -     | Request   |
| > TG24696 | 97x28x14   | 1xRuston    | 2460   | 68    | 525,000   |
| > TG25006 | 92x32x15   | 2xGM16V149  | 2500 Z | 96    | Request   |
| > TG25096 | 93x28x12   | 2xDeutz     | 2320 Z | 77    | Request   |
| > TG25100 | 100x27x12  | 2xGM16V149  | 2560   | 66    | 450,000   |
| > TG25113 | 94x28x-    | 2xRuston    | 2580   | 80    | 240,000   |
| > TG25118 | 117x26x8   | 4xGM16V71   | 2100 K | 69    | Request   |
| > TG25124 | 125x30x-   | 2xNiigata   | 2500 K | 76    | Request   |
| > TG25129 | 129x30x-   | 1xMirrlees  | 2520 K | 68    | Request   |
| > TG26008 | 117x30x15  | 2xYanmar    | 2600 K | 77    | Request   |
| > TG26096 | 97x32x14   | 2xWartsila  | 2655 K | 94    | 2,200,000 |
| > TG26104 | 104x28x11  | 2xYanmar    | 2600 Z | 78    | 370,000   |
| > TG26108 | 106x31x14  | 2xDaihatsu  | 2600 Z | 82    | 800,000   |
| ★ TG26109 | 107x26x-   | 2xGM16V149  | 2560   | 54    | 975,000   |
| > TG27005 | 94x30x-    | 2xDeutz     | 2720 Z | 84    | 1,500,000 |
| > TG27105 | 105x35x15  | 2xStork     | 2680 Z | 84    | Request   |
| > TG28086 | 86x24x-    | 2xNiigata   | 2800   | 89    | Request   |
| > TG28098 | 97x26x15   | 1xEMD16645  | 2800   | 80    | Request   |
| > TG28109 | 108x30x13  | 2xMTU       | 2800   | 77    | Request   |
| > TG28129 | 128x33x16  | 2xRuston    | 2800   | 67    | 375,000   |
| > TG28210 | 109x32x-   | 2xRuston    | 2820 K | 80    | 900,000   |
| > TG30011 | 101x31x14  | 2xYanmar    | 3000 Z | 96    | Request   |
| > TG30082 | 82x28x15   | 2xCAT3512   | 3300 Z | 01    | Request   |
| > TG30083 | 82x28x13   | 2xCAT3512   | 3000 K | 01    | Request   |
| TG30113   | 105x28x12  | 2xEMD12645  | 3000   | 66    | 2,000,000 |
| + TG30123 | 107x28x14  | 2xEMD12645  | 3000 K | 54    | Request   |
| TG30138   | 121x28x-   | 1xAlco      | 3000   | 95R   | 300,000   |
| > TG30141 | 124x32x16  | 2xMAN       | 3000   | 97R   | Request   |
| > TG30148 | 104x32x14  | 2xCummins   | 3200 K | New   | Quote     |
| > TG30161 | 125x30x-   | 1xRuston    | 3000 K | -     | Request   |
| > TG30174 | 82x28x13   | 2xCAT3512   | 3000   | 01    | Request   |
| > TG31102 | 102x29x-   | 2xNiigata   | 3100 Z | 91    | Request   |
| > TG32012 | 110x31x14  | 2xNiigata   | 3200 Z | 75    | 525,000   |
| > TG32100 | 119x32x14  | 2xNiigata   | 3200 Z | 94    | Request   |
| > TG32104 | 104x32x14  | 2xCummins   | 3200 K | 00    | Request   |
| > TG32112 | 122x28x15  | 2xNiigata   | 3200 K | 76    | 1,050,000 |
| > TG32114 | 119x32x14  | 2xNiigata   | 3200   | 73    | 525,000   |
| > TG32116 | 106x29x12  | 2xPielstick | 3200 Z | 97    | Request   |
| > TG33001 | 120x32x-   | 2xRuston    | 3380 K | 69    | 385,000   |
| > TG33108 | 105x34x16  | 2xCAT3516   | 3300 Z | 00    | Request   |
| > TG33119 | 120x33x-   | 2xRuston    | 3380   | 69    | Request   |
| > TG33130 | 130x31x-   | 2xFuji      | 3300   | 76    | 900,000   |
| > TG34105 | 98x31x12   | 2xDeutz     | 3400 Z | 97    | Request   |
| > TG34116 | 117x33x16  | 2xRuston    | 3380 Z | 69    | Request   |
| > TG34118 | 100x32x14  | 2xCAT3516   | 3400 Z | New   | Quote     |

K = Kort

Z = Z-peller

+ Located West Coast

★ Located East Coast

> Foreign Flag



### Tug Boats Continued

| File      | Dimensions | Machinery   | HP     | Built | Price     |
|-----------|------------|-------------|--------|-------|-----------|
| TG35101   | 100x34x15  | 1xCAT3512   | 3500 K | 01    | Charter   |
| > TG35104 | 104x32x14  | 2xCAT3512   | 3500 K | New   | Quote     |
| > TG36002 | 134x25x13  | 1xAlco      | 3560 K | 43    | 210,000   |
| > TG36085 | 85x32x15   | 2xYanmar    | 3600   | 02    | 2,600,000 |
| + TG36092 | 92x24x17   | 1xEMD20645  | 3600 K | 43    | Request   |
| > TG36099 | 97x28x12   | 2xNiigata   | 2400   | 69    | 265,000   |
| > TG36106 | 98x31x16   | 2xYanmar    | 3600 Z | 99    | Request   |
| > TG36107 | 98x31x16   | 2xYanmar    | 3600 Z | 01    | Request   |
| > TG36114 | 112x39x12  | 2xNiigata   | 3600 K | 82    | 895,000   |
| + TG36122 | 123x30x18  | 1xEMD20645  | 3600   | 95R   | 550,000   |
| > TG36128 | 122x34x17  | 2xFairbanks | 3600 K | 75    | 147,500   |
| > TG39115 | 115x33x15  | 2xWichmann  | 3600 K | 77    | Request   |
| > TG39119 | 107x32x-   | 1xPielstick | 3900   | 74    | 1,300,000 |
| TG39130   | 136x32x17  | 2xEMD16645  | 3600 K | 79    | Request   |
| ★ TG40086 | 90x41x16   | 3xCummins   | 4350 K | 98    | Request   |
| > TG40113 | 101x37x17  | 2xCAT3516   | 4000 Z | 99    | Request   |
| > TG40136 | 136x36x17  | 2xAlco      | 4460 K | 78    | Offer     |
| > TG40138 | 121x35x16  | 2xYanmar    | 4000 K | 98    | Request   |
| > TG40140 | 131x34x20  | 1xMAN       | 4000 K | 76    | Request   |
| > TG40145 | 144x35x17  | 2xAllen     | 3852 K | 72    | 1,360,000 |
| > TG40153 | 130x33x17  | 2xYanmar    | 4000 Z | 93    | Request   |
| > TG40154 | 113x30x-   | 2xYanmar    | 4000 Z | 94    | Request   |
| > TG40361 | 123x36x-   | 2xSacm      | 4000   | 75    | Request   |
| > TG42098 | 98x32x18   | 2xMAK       | 4200   | 97    | Request   |
| > TG42105 | 105x34x17  | 2xCAT3516   | 4200 Z | 00    | Request   |
| > TG42109 | 104x31x-   | 2xFuji      | 4200 K | 69    | Request   |
| > TG42119 | 112x33x15  | 2xNiigata   | 4200   | 72    | 790,000   |
| > TG42123 | 123x33x17  | 2xMWM       | 4250 K | 78    | Request   |
| > TG42129 | 130x37x19  | 2xMWM       | 4200   | 79    | Request   |
| ★ TG43121 | 124x32x-   | 2xEMD12645  | 4300   | 67    | Request   |
| > TG43138 | 138x37x19  | 2xMAK       | 4300 K | 73    | Request   |
| > TG43171 | 172x36x19  | 2xEMD12645  | 4300 K | 72    | 1,365,000 |
| > TG43412 | 100x31x-   | 2xWartsila  | 4344 Z | 01    | Request   |
| > TG44000 | 105x34x18  | 2xCAT3516   | 4400 Z | 01    | Request   |
| ★ TG44122 | 122x34x18  | 2xFairbanks | 4400   | 00R   | Request   |
| > TG44135 | 136x36x17  | 2xAlco      | 4460 K | 78    | Request   |
| > TG44137 | 138x35x17  | 1xCockerill | 4400   | 77    | Request   |
| + TG45205 | 205x39x-   | 4xCATD399   | 4500   | 44    | Offer     |
| > TG46097 | 97x33x16   | 2xMTU       | 4660 K | 02    | Request   |
| ★ TG46128 | 128x33x14  | 2xFairbanks | 4600   | 67    | Request   |
| TG48097   | 96x35x22   | 2xAlco      | 4800   | 79    | Request   |
| > TG50098 | 98x32x18   | 2xMAK       | 5000   | 98    | Request   |
| > TG50101 | 102x29x-   | 2xCrepelle  | 5000   | 72    | Request   |
| > TG50106 | 107x36x-   | 2xABC       | 5050   | 00    | Request   |
| > TG50114 | 114x36x18  | 2xYanmar    | 5000 Z | 01    | 5,000,000 |
| > TG50122 | 121x37x16  | 2xYanmar    | 5000 K | 98    | Request   |
| > TG50134 | 135x33x18  | 2xMAK       | 5000 K | 78    | Request   |
| > TG50150 | 150x33x18  | 2xNordberg  | 5000   | 86R   | Offer     |
| TG51090   | 90x41x16   | 3xCummins   | 5100 K | 00    | Request   |

Listings Updated Daily On Internet

| File      | Dimensions | Machinery   | HP     | Built | Price     |
|-----------|------------|-------------|--------|-------|-----------|
| > TG53096 | 97x36x-    | 2xCAT3606   | 5300   | 02    | Request   |
| > TG56147 | 147x37x17  | 2xMWM       | 5600 K | 74    | Request   |
| > TG56148 | 148x36x20  | 2xBergen    | 5600 K | 73    | Request   |
| > TG57006 | 120x32x15  | 2xEMD16645  | 5750 K | 63    | 1,450,000 |
| TG57007   | 145x35x17  | 2xEMD16645  | 5750   | 68    | Request   |
| > TG57181 | 181x77x30  | 2xEMD16645  | 5750 K | 75    | Request   |
| TG60110   | 110x41x16  | 3xWartsila  | 5100   | 89    | Request   |
| > TG63103 | 104x39x18  | 3xCAT3516   | 6300   | New   | Quote     |
| TG70135   | 135x38x20  | 2xEMD20645  | 8000 K | 00R   | Request   |
| TG70136   | 138x38x21  | 2xEMD20645  | 8000 K | 00    | Request   |
| > TG70144 | 144x38x20  | 2xNohab     | 7072 K | 75    | 1,050,000 |
| TG72150   | 150x40x22  | 2xEMD20645  | 7200 K | 76    | 2,500,000 |
| > TG73714 | 148x46x21  | 2xCAT3608   | 7370   | 95    | Request   |
| > TG80150 | 151x43x-   | 2xPielstick | 8000 K | 78    | Request   |
| > TG80152 | 146x35x16  | 2xMAK       | 8000 K | 75    | Request   |
| > TG84000 | 155x41x20  | 2xMAK       | 8400 K | 77    | Request   |
| TG84111   | 120x44x29  | 2xMAK       | 8400   | 91    | Request   |
| > TG90237 | 238x43x20  | 2xHanshin   | 9000 K | 76    | Request   |
| > TG90305 | 304x50x-   | 2xRussky    | 9000   | 77    | Request   |
| ★ TG99999 | 156x53x-   | 1xMAN       | 15200  | 81    | Request   |

### Push Boats

| File      | Dimensions | Machinery  | HP   | Built | Price   |
|-----------|------------|------------|------|-------|---------|
| TP02000   | 30x15x3    | 1xGM6-71   | 230  | -     | 280,000 |
| TP02436   | 37x11x5    | 2xGM4-71   | 240  | -     | 16,000  |
| + TP03312 | 30x12x2    | 2xGM6-71   | 330  | 87    | 40,000  |
| > TP03328 | 69x28x5    | 2xSW699    | 330  | 87    | 53,000  |
| ★ TP03425 | 26x14x-    | 2xGM6-71   | 330  | 99    | 160,000 |
| TP03626   | 25x14x-    | 2xGM6-71   | 330  | -     | 73,500  |
| TP04048   | 48x16x6    | 1xGM12V71  | 340  | -     | Request |
| TP04847   | 47x16x-    | 2xCAT3306  | 485  | 88    | 250,000 |
| + TP05026 | 50x17x-    | 2xGM8V71   | 460  | 70    | 157,500 |
| + TP05037 | 38x17x-    | 2xGM8V71   | 460  | 44    | Request |
| TP05041   | 40x15x-    | 2xGM8V71   | 460  | 73    | 157,000 |
| TP05058   | 57x22x-    | 3xGM6-71   | 495  | 60    | Request |
| TP06856   | 56x24x8    | 2xGM12V71  | 680  | 69    | Request |
| TP07000   | 55x20x-    | 2xGM12V71  | 680  | 68    | Request |
| TP07047   | 48x16x-    | 2xCAT3306  | 700  | 56    | Request |
| ★ TP08064 | 60x16x-    | 2xGM8V71T  | 800  | 98    | 240,000 |
| TP09060   | 60x24x-    | 2xGM16V71  | 910  | -     | Request |
| TP10060   | 60x22x10   | 2xCAT3408  | 1000 | 78    | 600,000 |
| TP10061   | 61x22x-    | 2xGM16V92  | 1000 | 80    | Request |
| TP10062   | 61x22x-    | 2xCummins  | 1000 | 81    | Request |
| TP10855   | 60x24x9    | 3xGM12V71  | 1080 | 80    | 525,000 |
| + TP11060 | 60x17x9    | 2xCAT3406  | 1100 | -     | 600,000 |
| TP17001   | 74x38x7    | 2xCAT      | 1750 | 80    | 790,000 |
| TP18028   | 75x28x11   | 2xGM16V149 | 1800 | 75    | Request |
| ★ TP20143 | 143x29x9   | 2xEMD12567 | 2000 | 45    | 295,000 |
| > TP36114 | 115x43x7   | 3xMAK      | 3600 | 95R   | Request |
| TP37150   | 150x35x-   | 2xAlco     | 3720 | 49    | 105,000 |

+ Located West Coast   ★ Located East Coast   > Foreign Flag

Details believed correct, not guaranteed. Offered subject to prior sale or charter.



## Deck Barges

| File      | Dimensions | Remarks           | Built | Price   |
|-----------|------------|-------------------|-------|---------|
| + DB01010 | 10x10x5    | Sectional         | -     | Request |
| ★ DB02007 | 20x7x4     | Sectional         | -     | 6,500   |
| + DB02010 | 20x10x5    | Sectional         | -     | Request |
| ★ DB02406 | 24x7x4     | Sectional         | -     | 6,500   |
| + DB03007 | 30x8x4     | Sectional         | -     | Request |
| ★ DB03027 | 30x27x7    | Sectional         | -     | 21,500  |
| ★ DB04055 | 40x12x5    | Sectional         | New   | Quote   |
| DB04514   | 45x14x3    | Inland            | 02    | 27,500  |
| ★ DB04528 | 45x28x4    | Inland            | -     | 21,500  |
| + DB05634 | 56x28x4    | Inland            | -     | 37,000  |
| > DB06027 | 60x25x8    | Sectional         | 99    | 110,000 |
| ★ DB06030 | 60x30x7    | Inland            | -     | 31,500  |
| + DB07524 | 75x24x-    | Inland - (2)      | 55    | Request |
| > DB08030 | 80x30x-    | Inland            | -     | Request |
| + DB08134 | 81x34x9    | Inland            | -     | 31,500  |
| ★ DB09030 | 90x30x9    | Inland            | -     | 42,500  |
| DB09042   | 90x40x7    | Inland            | -     | 79,000  |
| > DB09139 | 92x39x9    | Inland Spud       | -     | Request |
| DB09526   | 95x26x5    | Inland            | -     | 52,500  |
| DB10026   | 100x26x7   | Inland            | 65    | Request |
| + DB10047 | 100x45x8   | Inland            | 33    | 65,000  |
| + DB10229 | 102x29x12  | Inland            | 44    | Offer   |
| + DB10440 | 104x40x5   | Inland - (2)      | -     | 79,000  |
| + DB10447 | 104x47x8   | Inland Work       | 60    | 240,000 |
| DB10931   | 110x30x7   | Inland Spud - (2) | 78    | 52,500  |
| DB11028   | 110x29x7   | Inland - (2)      | -     | Request |
| + DB11040 | 110x35x-   | Inland - (4)      | -     | Request |
| + DB11044 | 110x30x7   | Inland            | 43    | Request |
| + DB11047 | 110x54x11  | Inland            | 48    | 149,000 |
| > DB11244 | 112x44x9   | Inland Spud       | -     | Request |
| ★ DB12020 | 120x40x11  | Inland            | 62    | 127,500 |
| DB12028   | 120x30x7   | Inland            | 79    | 52,500  |
| ★ DB12031 | 120x30x-   | Spud              | -     | 105,000 |
| DB12037   | 120x30x7   | Inland - (2)      | 92    | 125,000 |
| + DB12040 | 120x33x10  | Ocean - (4)       | 90    | 250,000 |
| ★ DB12043 | 120x40x8   | Inland            | -     | Request |
| > DB12048 | 120x44x-   | Inland Spud       | 32    | 275,000 |
| + DB12051 | 80x30x10   | Inland Spud       | -     | 79,500  |
| ★ DB12053 | 120x38x11  | Inland            | 60    | 117,500 |
| ★ DB12081 | 120x40x11  | Inland            | 62    | 123,000 |
| ★ DB12091 | 120x60x9   | Inland            | 45    | 105,000 |
| + DB12535 | 125x34x9   | Inland            | -     | 125,000 |
| ★ DB12541 | 125x40x11  | Inland            | 63    | 185,000 |
| > DB13139 | 131x39x9   | Ocean             | 02    | Request |
| > DB13165 | 131x66x-   | Ocean             | 70    | Request |
| > DB13503 | 135x35x-   | Inland            | -     | 185,000 |
| ★ DB13852 | 138x52x9   | Inland            | -     | 31,500  |
| DB14050   | 140x40x9   | Inland            | -     | Request |
| DB15033   | 150x32x8   | Inland            | -     | Request |

| File      | Dimensions | Remarks           | Built | Price     |
|-----------|------------|-------------------|-------|-----------|
| ★ DB15040 | 150x40x10  | Inland - (2)      | -     | Request   |
| + DB15043 | 150x42x14  | ex-Ocean          | 68    | 255,000   |
| + DB15053 | 150x50x8   | Inland - (2)      | 01    | Request   |
| > DB15090 | 150x90x20  | Ocean - (2)       | 75    | 425,000   |
| > DB15939 | 160x40x9   | Ocean             | 96    | 170,000   |
| + DB16005 | 160x40x11  | Ocean             | 68    | Request   |
| + DB16038 | 106x38x9   | Inland            | 26    | Request   |
| + DB16043 | 160x40x8   | Inland            | 01    | 335,000   |
| > DB16552 | 165x44x11  | Inland Chip - (3) | -     | 125,000   |
| > DB17644 | 175x44x13  | Coastal           | 59    | Request   |
| > DB18007 | 180x50x10  | Ocean             | 92    | 169,500   |
| > DB18031 | 180x56x12  | Ocean - (2)       | 95    | Request   |
| > DB18033 | 180x50x10  | Ocean             | 91    | 132,500   |
| + DB18041 | 180x54x12  | Ocean             | 80    | 790,000   |
| + DB18046 | 180x44x16  | Ocean             | 66    | Request   |
| + DB18059 | 180x54x13  | Ocean             | 81    | 895,000   |
| ★ DB18063 | 180x52x-   | Ocean             | 82    | Request   |
| > DB18069 | 180x50x10  | Ocean             | 90    | Request   |
| > DB18073 | 180x50x12  | Ocean - (2)       | 96    | Request   |
| + DB18142 | 181x42x11  | Inland            | 68    | 225,000   |
| > DB18156 | 181x57x13  | Ocean             | 99    | Request   |
| + DB19001 | 190x50x12  | Inland House      | 72    | Charter   |
| DB19074   | 190x75x10  | Inland            | -     | 425,000   |
| + DB19251 | 192x52x13  | Ocean             | -     | 840,000   |
| DB19538   | 195x35x10  | Inland            | -     | 131,500   |
| DB19540   | 195x35x10  | Inland            | -     | Request   |
| > DB20043 | 200x43x-   | Inland            | -     | 157,500   |
| ★ DB20050 | 200x50x11  | Inland            | -     | Request   |
| + DB20066 | 200x52x15  | Ocean             | 69    | 475,000   |
| > DB21059 | 210x56x12  | Ocean             | 91    | Request   |
| DB21062   | 210x60x-   | Ocean             | 77    | Request   |
| > DB21069 | 211x69x14  | Ocean             | 93    | Request   |
| > DB21449 | 214x49x11  | Ocean             | 99    | Request   |
| ★ DB21542 | 215x42x15  | Inland            | 45    | 132,500   |
| > DB22000 | 220x60x14  | Ocean - (2)       | 97    | 298,000   |
| > DB22043 | 220x43x14  | Coastal           | 56    | Request   |
| ★ DB22049 | 220x49x12  | Inland            | -     | 236,500   |
| DB22052   | 220x54x14  | Ocean             | 92    | 895,000   |
| > DB22062 | 220x60x14  | Ocean             | 96    | 288,000   |
| > DB22067 | 220x60x14  | Ocean - (2)       | 97    | 300,000   |
| + DB22464 | 224x64x14  | Ocean House       | 78    | Request   |
| DB22538   | 225x38x11  | Inland            | 48    | 132,500   |
| > DB23069 | 230x60x14  | Ocean - (5)       | 01    | Request   |
| + DB23650 | 236x50x14  | Ocean Subm        | 66    | 680,000   |
| ★ DB24005 | 240x72x16  | Ocean             | 77    | 1,050,000 |
| > DB24010 | 240x80x16  | Ocean             | 89    | 525,000   |
| ★ DB24011 | 240x50x13  | Ocean - (2)       | 83    | 790,000   |
| > DB24064 | 240x64x14  | Ocean             | 01    | 575,000   |
| + DB24075 | 240x70x19  | Ocean             | 83    | Request   |
| > DB24180 | 241x80x16  | Ocean             | 82    | Request   |
| + DB24263 | 242x60x16  | Ocean             | 72    | Request   |
| + DB24454 | 244x54x14  | ex-Ocean          | 64    | 420,000   |

+ Located West Coast   ★ Located East Coast   > Foreign Flag



## Deck Barges Continued

| File      | Dimensions | Remarks        | Built | Price     |
|-----------|------------|----------------|-------|-----------|
| + DB24848 | 248x48x12  | Inland         | 54    | 420,000   |
| ★ DB24976 | 249x75x16  | Ocean          | 76    | Request   |
| + DB25028 | 250x72x15  | Ocean          | 87    | Request   |
| DB25031   | 250x72x15  | Ex-Ocean       | 82    | Request   |
| + DB25050 | 250x50x13  | Inland         | 60    | 200,000   |
| DB25069   | 250x79x16  | Inland Spud    | -     | Request   |
| > DB25070 | 250x70x16  | Ocean          | New   | Quote     |
| DB25073   | 250x72x15  | Ocean - (2)    | 81    | Request   |
| > DB25098 | 250x80x16  | Ocean - (2)    | 99    | Request   |
| + DB25368 | 253x68x16  | Ocean House    | 80    | Request   |
| ★ DB26040 | 260x40x9   | Inland Spud    | -     | Request   |
| DB26049   | 260x48x15  | Inland         | 44    | 525,000   |
| ★ DB26053 | 260x48x15  | Inland House   | 48    | 265,000   |
| + DB26056 | 260x48x15  | Ex-Ocean       | 44    | Request   |
| DB26088   | 260x74x14  | Ocean          | 75    | Request   |
| + DB26148 | 261x48x15  | Inland         | -     | Request   |
| DB26452   | 264x50x10  | Inland - (3)   | 76    | Request   |
| DB26860   | 268x60x19  | Ocean          | 68    | Request   |
| + DB26868 | 268x60x19  | Ocean Freezer  | 69    | Request   |
| > DB27072 | 270x70x16  | Ocean          | 00    | Request   |
| > DB27073 | 270x70x16  | Ocean          | New   | Quote     |
| > DB27077 | 270x70x14  | Ocean Ramp     | 97    | 500,000   |
| + DB28060 | 280x60x17  | Ocean          | 69    | Request   |
| > DB28248 | 287x48x18  | Inland         | 15    | Request   |
| + DB28278 | 282x78x18  | Ocean          | 78    | Request   |
| > DB28290 | 282x90x18  | Ocean          | 94    | 1,100,000 |
| > DB29011 | 290x118x18 | Ocean - (2)    | 98    | Request   |
| > DB29050 | 290x50x12  | Inland         | -     | Request   |
| + DB29991 | 299x90x19  | Ex-Ocean       | 82    | 210,000   |
| > DB30004 | 330x96x20  | Ocean - (2)    | New   | Quote     |
| DB30013   | 300x90x19  | Ocean          | 82    | Request   |
| > DB30015 | 300x90x20  | Ocean - (2)    | 76    | Request   |
| > DB30026 | 300x90x20  | Ocean          | 78    | Request   |
| > DB30076 | 300x76x18  | Ocean          | 96    | 790,000   |
| > DB30077 | 300x76x18  | Ocean          | 97    | 870,000   |
| > DB30080 | 300x80x18  | Ocean          | New   | Quote     |
| > DB30083 | 300x80x18  | Ocean          | 01    | 1,050,000 |
| > DB30088 | 300x80x20  | Ocean          | 01    | 885,000   |
| > DB30090 | 300x90x18  | Ocean          | 93    | 950,000   |
| > DB30095 | 300x90x20  | Ocean          | 84    | 1,050,000 |
| > DB30097 | 300x100x25 | Ocean          | 84    | Request   |
| > DB30098 | 300x100x20 | Ex-Ocean       | 82    | 900,000   |
| DB30101   | 300x100x20 | Ocean          | 99    | Charter   |
| > DB30104 | 300x90x20  | Ocean          | 84    | 800,000   |
| > DB30291 | 300x90x20  | Ocean          | 77    | 1,195,00  |
| > DB31099 | 310x105x20 | Ocean Ice Str. | 76    | Request   |
| > DB31598 | 328x99x25  | Ocean          | 82    | Request   |
| > DB32550 | 325x50x15  | Inland         | 24    | 165,000   |
| > DB32883 | 328x82x24  | Ocean          | New   | Quote     |

Listings Updated Daily On Internet

| File      | Dimensions | Remarks           | Built | Price     |
|-----------|------------|-------------------|-------|-----------|
| > DB32899 | 328x121x23 | Ocean             | 75    | Request   |
| + DB33076 | 330x76x18  | Inland            | 63    | 685,000   |
| + DB33078 | 330x78x20  | Ocean             | 82    | Request   |
| > DB33082 | 330x80x18  | Ocean - (2)       | 96    | 1,770,000 |
| > DB33090 | 330x90x20  | Ocean             | 02    | Request   |
| > DB33097 | 330x96x20  | Ocean - (2)       | 99    | 2,200,000 |
| > DB33100 | 330x100x20 | Ocean             | 01    | Request   |
| > DB33894 | 338x94x21  | Ocean             | 77    | 420,000   |
| > DB34631 | 347x105x20 | Ex-Ocean          | 80    | 420,000   |
| DB35865   | 358x65x19  | Inland Rail       | -     | 265,000   |
| ★ DB36640 | 366x40x11  | Inland            | -     | 157,500   |
| > DB37696 | 376x96x22  | Ocean             | 91    | Request   |
| > DB39302 | 394x131x25 | Ocean             | 77    | Request   |
| > DB40003 | 400x100x24 | Ocean             | 75    | 1,900,000 |
| > DB40007 | 400x120x25 | Ocean             | 83    | Request   |
| DB40012   | 400x100x25 | Ex-Ocean          | 76    | Request   |
| ★ DB40017 | 400x100x25 | Ocean             | 76    | Offer     |
| ★ DB40020 | 400x100x20 | Ocean             | 75    | Request   |
| + DB40080 | 400x76x20  | Ocean             | 68    | Request   |
| + DB40098 | 400x100x20 | Ocean             | 74    | Request   |
| + DB40104 | 400x100x20 | Ocean             | 70    | Request   |
| DB40105   | 400x100x25 | Ocean House       | 76    | Request   |
| > DB40590 | 405x90x20  | Ocean             | 76    | Request   |
| ★ DB41710 | 417x105x20 | Ocean Ro/Ro - (2) | 76    | Offer     |
| + DB43857 | 437x56x28  | Inland            | -     | 150,000   |
| DB46065   | 460x65x22  | Ocean ITB         | 88    | Request   |
| > DB47299 | 472x144x23 | Inland            | 01    | Request   |
| > DB48500 | 482x105x28 | Ocean Ice Str.    | 81    | Request   |
| DB56885   | 568x85x24  | Ocean ITB         | 82    | Charter   |
| > DB60000 | 600x154x38 | Ocean             | 78    | Request   |

## Derrick Barges

| File      | Dimensions | Remarks          | Built | Price     |
|-----------|------------|------------------|-------|-----------|
| > DK04520 | 45x20x3    | Inland 13T       | -     | Request   |
| > DK05726 | 57x26x-    | Inland 9.2T      | -     | Request   |
| DK06532   | 65x32x5    | Inland           | -     | Request   |
| DK07035   | 70x35x-    | Inland 100T      | -     | Request   |
| ★ DK07530 | 75x30x5    | Inland 40T       | -     | Offer     |
| > DK08229 | 82x30x-    | Inland 25T       | 86    | Request   |
| DK08233   | 82x33x5    | Inland 32T       | 60    | Request   |
| ★ DK08546 | 85x46x6    | Inland 40T       | -     | Request   |
| + DK09030 | 90x30x5    | Inland B.E. 30B  | 85    | 105,000   |
| DK09740   | 97x40x8    | Inland           | -     | Request   |
| ★ DK10034 | 100x34x-   | Inland Spud      | -     | Request   |
| ★ DK10040 | 100x40x9   | Inland Clyde 20T | 62    | 315,000   |
| ★ DK10050 | 100x50x8   | American R-20    | -     | 790,000   |
| > DK10952 | 109x52x14  | Coastal 120T     | -     | Offer     |
| ★ DK11053 | 110x48x12  | Inland           | -     | 630,000   |
| > DK11876 | 119x77x-   | Inland 200T      | 70    | 1,050,000 |
| > DK11961 | 120x61x10  | Inland 32T       | 82    | Offer     |

Ask for List of Sectional and Other Size Barges

Details believed correct, not guaranteed. Offered subject to prior sale or charter.



| File      | Dimensions | Remarks          | Built | Price     | File      | Dimensions | BBL    | Remarks     | Built | Price     |
|-----------|------------|------------------|-------|-----------|-----------|------------|--------|-------------|-------|-----------|
| + DK12006 | 116x32x6   | 50T/Pedestal     | -     | Offer     | > TB08025 | 255x46x8   | 8020   | Inland      | 94    | Request   |
| ★ DK12041 | 120x40x7   | Inland Spud      | -     | Request   | TB08095   | 95x54x12   | 8275   | Inland      | 72    | 95,000    |
| ★ DK12060 | 120x60x10  | Inland           | 45    | 105,000   | TB10002   | 232x35x11  | 10360  | Inland      | 84    | 200,000   |
| + DK12062 | 120x60x-   | Inland 65T       | -     | Request   | TB10012   | 123x50x12  | 10000  | Inland      | 59    | Request   |
| > DK12334 | 123x34x-   | Pedestal 100T    | 58    | Offer     | TB10019   | 196x35x-   | 10000  | Inland      | -     | Request   |
| ★ DK13034 | 130x34x6   | Inland Spud      | -     | Request   | + TB10225 | 250x50x18  | 10285  | Ocean       | 66    | Request   |
| > DK13262 | 132x62x9   | 100T/Revolver    | 64    | 525,000   | TB12023   | 235x40x12  | -      | Inland      | 53    | 315,000   |
| > DK13650 | 136x50x10  | Inland 75T       | 64    | 460,000   | TB14019   | 195x50x14  | 14958  | Inland      | 59    | 275,000   |
| + DK13948 | 139x48x8   | Inland Clamshell | 94    | Request   | > TB14022 | 190x50x14  | -      | Ocean       | 01    | Request   |
| ★ DK14050 | 140x50x11  | Inland Spud      | 75    | 295,000   | TB17321   | 215x54x13  | 17323  | Inland      | 74    | 385,000   |
| + DK14085 | 140x84x15  | Inland 200T      | 17    | 370,000   | > TB17950 | 180x50x11  | 19000  | Coastal (2) | 82    | Request   |
| > DK14446 | 145x46x-   | Inland 45T       | 68    | Request   | > TB18821 | 210x60x12  | 18857  | Ocean       | 89    | 675,000   |
| > DK14465 | 144x65x9   | 100T/revolving   | 84    | Request   | > TB18871 | 210x59x-   | 18000  | Ocean       | 89    | 900,000   |
| > DK14482 | 144x82x15  | Propelled 130T   | 60    | Request   | TB22229   | 295x54x13  | 22239  | Inland      | 74    | 490,000   |
| > DK15050 | 150x50x10  | Ocean Spud       | 99    | Request   | TB24929   | 295x54x-   | 24978  | Inland      | 74    | 550,000   |
| > DK15166 | 151x66x15  | 250T Revolver    | 68    | 1,500,000 | > TB25023 | 230x60x18  | -      | Ocean       | 01    | Request   |
| > DK15257 | 152x58x13  | Propelled 75T    | 74    | Request   | > TB26260 | 260x48x10  | 25000  | Inland      | 60    | Request   |
| > DK15970 | 159x70x14  | Propelled        | 01    | Request   | > TB27049 | 300x49x14  | 27324  | Inland      | 58    | 525,000   |
| ★ DK16060 | 160x60x9   | Inland           | 72R   | 175,000   | > TB28025 | 260x55x17  | -      | Propelled   | 70    | Request   |
| ★ DK16063 | 160x60x7   | Inland           | -     | 175,000   | TB28286   | 287x52x18  | -      | Ocean       | 73    | Offer     |
| > DK17050 | 170x50x9   | Lima 150T        | 68    | Request   | ★ TB29000 | 298x54x12  | 28870  | Inland      | 75    | 690,000   |
| > DK17465 | 175x66x-   | 136T Ringer      | 75    | Request   | ★ TB29001 | 298x54x12  | 28858  | Inland      | 75    | 730,000   |
| + DK17575 | 175x75x12  | Ocean            | 94    | 1,600,000 | TB30734   | 346x53x14  | 30760  | LPG         | 67    | Request   |
| > DK18049 | 180x50x10  | 150T Crawler     | 88    | 1,050,000 | > TB30912 | 220x60x16  | 30921  | Coastal     | 99    | Request   |
| > DK18072 | 180x72x12  | 350T/A-Frame     | 79    | Request   | TB31270   | 270x72x-   | -      | Ocean       | 02    | Request   |
| > DK18462 | 184x62x-   | 350T/Sheerleg    | 75    | Request   | + TB37240 | 240x70x19  | 37000  | Ocean       | 83    | Request   |
| DK19535   | 195x35x11  | Inland           | -     | Request   | > TB40023 | 230x60x18  | -      | Ocean       | 02    | Request   |
| DK20040   | 200x40x10  | Inland           | -     | Request   | TB52392   | 391x56x26  | -      | ITB         | 71    | Request   |
| > DK21060 | 210x60x12  | Ocean Spud       | 97    | Request   | ★ TB99021 | 562x90x45  | 282942 | Ocean       | 56    | 1,500,000 |
| > DK21385 | 213x85x-   | Propelled 400T   | 02    | Request   | > TB99059 | 597x83x59  | 236836 | Ocean       | 02    | Request   |
| > DK21576 | 215x76x15  | Ocean 302T       | 74    | Request   | > TB99396 | 400x103x25 | -      | Inland      | 78    | Request   |
| > DK23075 | 230x75x12  | Ocean 350T       | 78    | Request   |           |            |        |             |       |           |
| > DK24668 | 246x69x16  | Ocean 100T       | 80    | Request   |           |            |        |             |       |           |
| > DK24970 | 249x69x-   | Clyde 275T       | 67    | 1,750,000 |           |            |        |             |       |           |
| ★ DK25060 | 250x60x16  | Inland Spud      | 62    | Request   |           |            |        |             |       |           |
| > DK30101 | 301x100x25 | 3000T A-Frame    | 85    | Request   |           |            |        |             |       |           |

### Tank Barges

| File      | Dimensions | BBL  | Remarks   | Built | Price   |
|-----------|------------|------|-----------|-------|---------|
| ★ TB00001 | 57x8x-     | -    | Inland    | -     | 26,500  |
| ★ TB00250 | 43x16x-    | 250  | Inland    | 80    | Request |
| ★ TB00857 | 70x19x8    | 857  | Inland    | 52    | 26,500  |
| + TB01075 | 75x24x-    | 1047 | Coastal   | 55    | Request |
| > TB01325 | 98x25x6    | 1325 | Propelled | 77    | 221,000 |
| TB02094   | 94x28x6    | 2000 | Inland    | -     | 69,000  |
| + TB03510 | 109x23x-   | 3592 | Inland    | -     | 12,000  |
| > TB04212 | 125x26x9   | -    | Propelled | 99    | 315,000 |
| TB04514   | 140x30x7   | 4500 | Inland    | 61    | 69,000  |
| TB05615   | 150x35x8   | -    | Inland    | 74    | Request |
| + TB07517 | 168x40x10  | 7500 | Inland    | -     | 80,000  |

### Miscellaneous Barges

| File      | Dimensions | Remarks           | Built | Price     |
|-----------|------------|-------------------|-------|-----------|
| > MB04014 | 40x14x5    | Propelled         | 60    | Request   |
| > MB05016 | 50x16x5    | Inland House      | -     | 17,000    |
| > MB06028 | 60x28x-    | Quarters - 12     | -     | Request   |
| MB06050   | 60x50x12   | Quarters          | -     | 52,5000   |
| MB06428   | 64x28x5    | Jack-Up           | 72    | 205,000   |
| > MB06868 | 70x70x7    | Jack-Up           | 85    | 1,200,000 |
| > MB07529 | 76x30x-    | Lift Boat         | -     | Request   |
| > MB08066 | 80x60x7    | Jack-Up           | 81    | 900,000   |
| > MB08585 | 85x85x11   | Jack-Up           | 99    | 2,300,000 |
| MB10030   | 100x30x6   | Quarters - 30     | 78    | 315,000   |
| + MB10428 | 110x28x11  | Maintenance Barge | -     | 74,000    |
| + MB11135 | 106x34x11  | Quarters - 30     | 45    | Request   |
| ★ MB11531 | 115x31x6   | Restaurant        | -     | 70,000    |
| > MB11652 | 116x52x10  | Cement Barge      | 85    | Request   |
| MB12029   | 120x30x7   | Quarters - 22     | 88R   | 315,000   |
| MB12030   | 120x30x7   | Quarters - 52     | -     | 42,500    |

+ Located West Coast    ★ Located East Coast    > Foreign Flag



## Miscellaneous Barges Continued

| File      | Dimensions | Remarks          | Built | Price     |
|-----------|------------|------------------|-------|-----------|
| MB12031   | 120x30x7   | Quarters - 36    | -     | 237,500   |
| MB12032   | 130x30x7   | Quarters - 26    | -     | 290,000   |
| MB12033   | 120x33x11  | Reefer Barge     | -     | 375,000   |
| MB12035   | 120x30x9   | Inland Work      | -     | 170,000   |
| > MB12378 | 123x78x14  | Jack-up          | 73    | Request   |
| > MB13165 | 131x66x10  | Ocean Work       | 01    | 790,000   |
| > MB13612 | 146x122x14 | Jack-Up Quarters | 83    | Request   |
| > MB14292 | 142x92x12  | Jack-Up          | 72    | Request   |
| MB14531   | 145x31x9   | Cement Barge     | 68    | 425,000   |
| MB15032   | 150x32x9   | Quarters - 60    | 60    | 750,000   |
| + MB15034 | 150x34x-   | Ocean Work       | -     | 129,000   |
| + MB15044 | 150x44x12  | Quarters - 54    | 93    | 815,000   |
| MB15051   | 150x50x12  | Inland work      | 69    | 157,500   |
| MB15535   | 155x35x12  | Cement Barge     | -     | 235,256   |
| > MB15910 | 160x100x-  | Jack-Up          | 60    | Request   |
| > MB15942 | 159x50x15  | Inland Work      | 90    | Request   |
| MB16502   | 165x140x5  | Lift Boat        | 99    | Request   |
| > MB18060 | 180x59x-   | Ocean Work       | 84    | Request   |
| > MB19773 | 197x74x16  | Maintenance      | 88    | Request   |
| > MB20050 | 200x50x8   | Inland House     | 86    | Request   |
| > MB20051 | 200x50x-   | Quarters - 54    | -     | 525,000   |
| MB20830   | 208x30x7   | Quarters - 70    | -     | Request   |
| > MB22145 | 221x44x12  | Inland Work      | 84    | 370,000   |
| > MB22587 | 225x87x15  | Chip Processor   | -     | Request   |
| > MB23478 | 234x75x20  | Ocean Work       | 82    | Request   |
| > MB23668 | 237x69x-   | Cable Barge      | -     | Request   |
| > MB24282 | 243x82x16  | Ocean Work       | 80    | Request   |
| ★ MB24550 | 245x50x15  | Inland House     | -     | 150,000   |
| > MB25560 | 246x60x27  | Cable Layer      | 98    | Request   |
| > MB25561 | 246x60x27  | Cable Layer      | 96    | Request   |
| ★ MB26148 | 261x48x15  | Quarters         | -     | 685,000   |
| ★ MB26149 | 261x48x15  | Quarters - 500   | 45    | Offer     |
| > MB26445 | 364x45x26  | Quarters - 300   | 85    | 2,250,000 |
| > MB27172 | 271x72x15  | Ocean Work       | 77    | Request   |
| > MB27267 | 272x67x-   | Ocean Work       | -     | Request   |
| > MB29059 | 300x90x21  | Ocean Work       | 76    | 5,500,000 |
| > MB29689 | 296x90x20  | Ocean Work       | 80    | Request   |
| > MB29979 | 300x80x13x | Jack-up          | 79    | Request   |
| > MB31984 | 325x85x20  | Ocean Work       | 80    | 7,000,000 |
| > MB32825 | 328x252x32 | Jack-Up Rig      | 93    | Request   |
| > MB33095 | 330x96x-   | Quarters - 198   | 01    | Request   |
| > MB33107 | 331x107x22 | Ocean Work       | 95    | 8,500,000 |
| > MB33669 | 337x70x18  | Ocean Work       | 83    | 6,500,000 |
| MB35061   | 350x60x22  | Ocean Lay        | 58    | Offer     |
| ★ MB36290 | 362x90x22  | Quarters - 1100  | 90R   | Request   |
| > MB36590 | 365x90x20  | Ocean Work       | 75    | Request   |
| > MB36737 | 367x45x38  | Quarters - 400   | 86    | Request   |
| > MB39399 | 316x99x20  | Quarters - 127   | 84    | 9,000,000 |
| > MB40076 | 400x76x20  | Ocean Work       | 70    | Request   |

## Hopper Barges

| File      | Dimensions | Remarks             | Built | Price   |
|-----------|------------|---------------------|-------|---------|
| HB05025   | 50x25x-    | Inland Dump         | -     | Request |
| HB06231   | 62x31x13   | Lash - 146          | 74    | Request |
| > HB12537 | 126x36x13  | Inland Dump         | 80    | Request |
| HB14036   | 140x36x-   | Cement              | 79    | 370,000 |
| ★ HB14440 | 144x40x14  | Inland Dump         | 54    | 26,500  |
| ★ HB14531 | 145x31x9   | Inland Cement       | 68    | Offer   |
| ★ HB14638 | 146x38x17  | Inland Hopper       | 52    | Offer   |
| ★ HB14640 | 146x38x17  | Inland Open         | -     | 121,000 |
| ★ HB14646 | 146x38x18  | Inland Open         | -     | 158,000 |
| > HB15280 | 152x80x11  | Inland Propelled    | 95    | Offer   |
| ★ HB17140 | 171x42x16  | Inland Dump         | 62    | 185,000 |
| ★ HB17141 | 171x42x16  | Inland Dump         | 62    | 210,000 |
| ★ HB17143 | 171x42x16  | Inland Dump         | 62    | 265,000 |
| ★ HB17144 | 171x43x16  | Inland Dump         | -     | 52,500  |
| > HB18133 | 181x34x14  | Propelled Dump      | 80    | Request |
| ★ HB18345 | 183x45x16  | Dump Barge          | -     | 52,500  |
| ★ HB18643 | 186x43x15  | Ocean Dump          | 55    | 850,000 |
| HB19537   | 195x35x11  | Inland Cement       | 59    | 250,000 |
| > HB19541 | 195x35x12  | Inland Hopper - (2) | 75    | 265,000 |
| HB19545   | 195x35x12  | Inland Cement - (4) | 69    | 80,000  |
| ★ HB19546 | 195x46x15  | Inland Dump         | 59    | 52,500  |
| HB19556   | 195x46x15  | Inland Dump         | 59    | 158,000 |
| ★ HB19562 | 195x35x12  | Inland Hopper -(2)  | 90    | Offer   |
| > HB19736 | 197x36x13  | Dump Coastal        | 00    | Request |
| HB24004   | 240x52x17  | Ocean               | 80    | 750,000 |
| HB24005   | 240x52x17  | Ocean               | 76    | 790,000 |
| > HB24938 | 249x37x14  | Inland              | 84    | Request |
| > HB24939 | 249x37x13  | Inland              | 83    | Request |
| > HB25043 | 250x43x23  | Inland Cement       | 09    | 160,000 |
| HB25053   | 250x53x11  | Inland Cement       | 67    | 250,000 |
| HB25944   | 259x44x21  | Coastal             | 53    | 420,000 |
| > HB27536 | 275x36x13  | Propelled Dump      | 00    | Request |
| ★ HB30339 | 303x38x17  | Inland              | 58    | 250,000 |
| > HB34851 | 359x50x24  | Ocean               | 61    | 840,000 |
| > HB40175 | 333x75x24  | Coastal             | 69    | 950,000 |
| ★ HB42081 | 420x80x32  | Ocean               | 67    | Request |
| > HB43081 | 430x80x29  | Ocean               | 70    | Request |
| HB45376   | 453x76x36  | Ex-Ocean            | 79    | 900,000 |
| > HB47578 | 475x75x35  | Ex-Ocean            | 66    | 630,000 |

## Supply Boats

| File      | Dimensions | Machinery  | HP   | Built | Price     |
|-----------|------------|------------|------|-------|-----------|
| SU13030   | 130x30x12  | 2xGM16V92  | 1200 | 82    | 1,325,000 |
| SU13031   | 130x30x12  | 2xCAT3412  | 1350 | -     | Request   |
| > SU14033 | 140x33x14  | 2xB&W      | 2000 | 81    | 1,050,000 |
| SU15034   | 150x34x12  | 2xGM12V149 | 1400 | 65    | 550,000   |
| > SU15236 | 152x36x13  | 4xGM12V71  | 1360 | 66    | 295,000   |

+ Located West Coast   ★ Located East Coast   > Foreign Flag

Details believed correct, not guaranteed. Offered subject to prior sale or charter.



# Marcon International, Inc.

www.marcon.com

Spring  
2002

| File      | Dimensions | Machinery   | HP     | Built | Price     | File      | Dimensions | Machinery  | HP     | Built | Price     |
|-----------|------------|-------------|--------|-------|-----------|-----------|------------|------------|--------|-------|-----------|
| SU15532   | 150x32x13  | 2xEMD8645   | 1950   | 76    | 1,575,000 | > SU18120 | 180x40x16  | 2xAlco     | 4100 K | 82    | 1,260,000 |
| > SU15736 | 157x36x11  | 2xCAT3412   | 1230   | 02    | Request   | > SU18138 | 182x38x15  | 2xB&W      | 2480   | 77    | Request   |
| SU15738   | 157x38x14  | 2xCATD398   | 1700   | 81    | 1,000,000 | > SU18142 | 180x38x14  | 2xEMD16567 | 3280   | 75    | Request   |
| > SU15739 | 147x39x18  | 2xEMD16645  | 6000   | 76    | 1,000,000 | > SU18244 | 182x45x17  | 2xMirrlees | 2880 K | 83    | Request   |
| SU15838   | 165x38x11  | 2xGM16V149  | 2200   | 77    | Request   | > SU18343 | 183x40x14  | 2xEMD12645 | 3000   | 83    | Request   |
| > SU16000 | 160x39x16  | 2xEMD12645  | 3000 K | 69    | Request   | > SU18430 | 185x38x14  | 2xCATD399  | 2250   | 79    | Request   |
| SU16038   | 157x38x14  | 2xCATD398   | 1700   | 81    | 1,000,000 | > SU18445 | 184x47x17  | 2xMWM      | 3500   | 74    | 1,050,000 |
| > SU16340 | 166x41x15  | 2xDaihatsu  | 2600   | 80    | Request   | > SU18449 | 185x46x25  | 2xDeutz    | 3500   | 75    | Request   |
| SU16548   | 165x38x13  | 2xGM16V149  | 1800   | 81    | 945,000   | > SU18506 | 185x38x16  | 2xEMD16645 | 3900   | 72    | Request   |
| SU16606   | 166x38x13  | 2xGM16V149  | 1800   | 80    | Request   | > SU18507 | 185x39x15  | 2xLister   | 4000 K | 73    | Request   |
| SU16614   | 166x38x13  | 2xGM16V149  | 1800   | 76    | 945,000   | SU18510   | 185x40x14  | 2xCATD399  | 2250   | 82    | Request   |
| SU16617   | 166x38x13  | 2xGM16V149  | 2240   | 76    | 945,000   | > SU18535 | 185x35x13  | 2xCATD398  | 1700   | 76    | Request   |
| SU16621   | 166x38x12  | 2xCATD398   | 1700   | 77    | 1,050,000 | SU18540   | 185x40x14  | 2xCATD399  | 2250   | 82    | Request   |
| SU16624   | 166x38x13  | 2xGM16V149  | 1860   | 81    | Request   | > SU18545 | 185x40x14  | 2xStork    | 2900   | 73    | Request   |
| SU16636   | 166x38x13  | 2xGM16V149  | 1800   | 80    | Request   | > SU18548 | 185x45x17  | 2xYanmar   | 3000   | 01    | Request   |
| > SU16638 | 166x38x13  | 2xGM16V149  | 1860   | 79    | Request   | > SU18562 | 185x38x14  | 2xEMD16567 | 3200   | 82    | 945,000   |
| > SU16639 | 166x38x13  | 2xGM16V149  | 1860   | 80    | Request   | > SU18568 | 185x38x15  | 2xEMD16645 | 3900   | 81    | 1,050,000 |
| > SU16648 | 166x38x13  | 2xGM16V149  | 1860   | 79    | 790,000   | > SU18570 | 185x38x16  | 2xEMD16645 | 3900 K | 71    | 1,000,000 |
| SU16649   | 166x38x13  | 2xGM16V149  | 1860   | 80    | 945,000   | SU18571   | 185x40x14  | 2xGM16V149 | 2200   | 82    | 945,000   |
| SU16650   | 166x38x12  | 2xGM16V149  | 1800   | 78    | Request   | SU18603   | 186x38x13  | 2xCAT3512  | 2350   | 82    | 945,000   |
| + SU16838 | 168x38x14  | 2xEMD12645  | 3000   | 77    | Request   | > SU18642 | 186x43x15  | 2xDeutz    | 3500 K | 77    | 945,000   |
| > SU17001 | 170x37x14  | 2xLister    | 2400 K | 68    | 650,000   | > SU18710 | 187x38x15  | 2xEMD16567 | 3200   | 75    | 800,000   |
| > SU17004 | 171x38x15  | 2xEMD16567  | 3280 K | 72    | Request   | > SU18839 | 188x38x18  | 2xMAN      | 4600   | 76    | 1,260,000 |
| > SU17009 | 171x38x15  | 2xEMD16567  | 3280   | 73    | Request   | > SU18845 | 188x40x16  | 2xEMD16645 | 4610   | 83    | 945,000   |
| SU17014   | 170x38x14  | 2xEMD12567  | 2400   | 71    | Request   | > SU18907 | 189x40x15  | 2xYanmar   | 2800 K | 82    | Request   |
| > SU17039 | 170x39x17  | 2xDaihatsu  | 2480   | 85    | Request   | > SU19007 | 190x43x18  | 2xCAT3516  | 4000 K | New   | Quote     |
| SU17040   | 180x40x14  | 2xCAT3516   | 3400   | 79    | Request   | SU19042   | 190x38x14  | 2xGM16V149 | 1800   | 75    | Request   |
| > SU17103 | 171x38x14  | 2xEMD16567  | 3240   | 73    | Offer     | > SU19055 | 190x40x16  | 2xEMD12645 | 4300   | 79    | 1,050,000 |
| > SU17347 | 173x38x14  | 2xCAT3512   | 2350   | 80    | 945,000   | SU19056   | 185x40x16  | 2xEMD16645 | 3900 K | 78    | 945,000   |
| > SU17442 | 174x38x18  | 2xIndustrie | 2000   | 75    | 420,000   | > SU19058 | 190x40x14  | 2xEMD16645 | 3900   | 80    | 945,000   |
| SU17501   | 175x40x15  | 2xGM16V149  | 1800   | 82    | 1,900,000 | > SU19205 | 192x43x22  | 2xBergen   | 7200 K | 84    | Request   |
| SU17504   | 175x38x13  | 2xCATD399   | 2250   | 78    | Request   | > SU19409 | 195x40x16  | 2xDaihatsu | 5200   | 83    | Request   |
| > SU17536 | 175x37x13  | 2xMAK       | 3500   | 72    | Request   | > SU19441 | 194x40x17  | 2xNohab    | 7072 K | 75    | 1,000,000 |
| SU17641   | 176x40x14  | 2xEMD12645  | 3000   | 82    | Request   | SU19447   | 194x40x15  | 2xEMD16645 | 4500   | 82    | 1,260,000 |
| > SU17684 | 176x38x14  | 2xCAT3512   | 2400   | 82    | 945,000   | > SU19448 | 194x40x15  | 2xEMD16645 | 4500   | 83    | 1,260,000 |
| > SU17939 | 180x38x15  | 2xB&W       | 2480   | 77    | Request   | > SU19541 | 195x41x17  | 2xMirrlees | 6166   | 84    | Request   |
| > SU17940 | 179x40x14  | 2XSulzer    | 4320 K | 79    | Request   | > SU19548 | 195x42x16  | 2xRuston   | 6670 K | 73    | 1,050,000 |
| > SU18001 | 180x38x14  | 2xCATD399   | 2250   | 75    | Request   | > SU19603 | 196x41x18  | 2xNohab    | 6160 K | 73    | Request   |
| > SU18003 | 180x40x15  | 2xGM16V149  | 2560   | 75    | Request   | > SU19643 | 196x43x21  | 2xMAK      | 6000   | 76    | 1,050,000 |
| SU18006   | 180x38x14  | 2xCATD399   | 2250   | 78    | 945,000   | > SU19645 | 196x43x18  | None       | -      | 99    | 1,500,000 |
| SU18016   | 180x38x14  | 2xEMD8645   | 1950   | 74    | Request   | > SU19705 | 196x43x21  | 2xMAK      | 7300   | 77    | 1,315,000 |
| SU18019   | 180x44x15  | 2xEMD12645  | 3000   | 79    | Request   | > SU19706 | 197x44x21  | 2xMAK      | 7300   | 76    | 1,315,000 |
| > SU18022 | 180x40x14  | 2xEMD12645  | 3000   | 79    | 790,000   | > SU19747 | 198x43x20  | 2xMAK      | 6600 K | 77    | 1,500,000 |
| SU18029   | 180x40x14  | 2xCATD399   | 2250   | 78    | 945,000   | > SU19749 | 197x43x20  | 2xSulzer   | 8640 K | 82    | 2,760,000 |
| SU18061   | 180x38x14  | 2xEMD16645  | 3900   | 75    | 945,000   | > SU20008 | 201x41x18  | 2xNohab    | 7040 K | 76    | Request   |
| SU18063   | 180x40x14  | 2xEMD12645  | 2700   | 76    | Request   | > SU20018 | 201x41x18  | 2xNohab    | 7040 K | 76    | 1,050,000 |
| SU18068   | 180x38x14  | 2xGM16V149  | 2240   | 76    | 1,655,000 | > SU20044 | 201x43x21  | 2xMAK      | 7000 K | 75    | 1,600,000 |
| > SU18092 | 180x40x14  | 2xGM16V149  | 1800   | 81    | Request   | > SU20129 | 202x40x19  | 2xDeutz    | 7200 K | 83    | Request   |
| > SU18103 | 180x38x14  | 2xEMD12645  | 3000   | 74    | 945,000   | > SU20200 | 202x38x15  | 2xYanmar   | 3520   | 84    | Request   |
| > SU18112 | 180x40x14  | 2xCATD399   | 2250   | 83    | Request   | > SU20238 | 202x38x15  | 2xYanmar   | 3520   | 82    | 2,750,000 |
| SU18118   | 180x38x13  | 2xGM16V149  | 1800   | 80    | Request   | > SU20745 | 207x45x21  | 2xWichmann | 4200   | 77    | Request   |
| > SU18119 | 180x40x16  | 2xAlco      | 4100 K | 82    | 1,050,000 | > SU20845 | 208x45x21  | 2xWichmann | 4200   | 75    | Request   |

+ Located West Coast   ★ Located East Coast   > Foreign Flag

Details believed correct, not guaranteed. Offered subject to prior sale or charter.



### Supply Boats

| File      | Dimensions | Machinery  | HP      | Built | Price      |
|-----------|------------|------------|---------|-------|------------|
| > SU20943 | 210x44x20  | 2xStork    | 8000 K  | 74    | Request    |
| > SU20950 | 210x49x18  | 2xWartsila | 8920    | 99    | 13,000,000 |
| > SU20951 | 210x44x21  | 2xStork    | 8000 K  | 75    | Request    |
| > SU20954 | 209x43x16  | 2xStork    | 8000 K  | 76    | Request    |
| > SU20955 | 210x44x21  | 2xStork    | 8000 K  | 73    | Request    |
| > SU21002 | 205x45x18  | 2xEMD20645 | 7200    | 75    | Request    |
| > SU21003 | 210x45x18  | 2xEMD20645 | 7200    | 75    | Request    |
| > SU21007 | 210x43x17  | 2xDelaval  | 7500 K  | 77    | Request    |
| > SU21441 | 214x41x15  | 2xDaihatsu | 4200    | 76    | Request    |
| > SU21442 | 214x42x18  | 2xMirrlees | 6166    | 85    | Request    |
| > SU21546 | 215x45x23  | 2xWartsila | 9700    | 83    | Request    |
| > SU21556 | 215x56x21  | 2xWartsila | 7200 K  | 02    | Request    |
| > SU22051 | 220x50x24  | 4xMAK      | 14400 K | 82    | Request    |
| > SU23551 | 236x54x25  | 4xMAK      | 10880 K | 83    | Request    |
| > SU25345 | 256x47x24  | 2xMAK      | 9450 K  | 76    | Request    |
| > SU26600 | 266x54x24  | 2xSulzer   | 7200    | 85    | Request    |
| > SU26664 | 266x54x24  | 2xSulzer   | 7200    | 83    | 2,500,000  |
| > SU28859 | 289x58x33  | 4xStork    | 23200   | 83    | Request    |
| > SU29756 | 298x57x33  | 2xSulzer   | 16800 K | 79    | Charter    |

### Utility Boats

| File      | Dimensions | Machinery | HP     | Built | Price   |
|-----------|------------|-----------|--------|-------|---------|
| > UB02507 | 25x8x2     | 1xFord    | 140    | 01    | Request |
| + UB04001 | 40x12x-    | 1xGM6-71  | 165    | -     | 18,000  |
| > UB04115 | 41x16x-    | 2xCAT3306 | 440    | 99    | Offer   |
| > UB04116 | 41x16x-    | -         | -      | 99    | Offer   |
| + UB05000 | 50x-x-     | 2xGM6-71  | 330    | -     | Offer   |
| + UB05614 | 56x14x8    | 2xGM6-71  | 330    | 66    | 80,000  |
| > UB06019 | 60x19x5    | 2xGM8V71  | 480 -  | 89    | Request |
| > UB06819 | 69x19x9    | 2xGM12V71 | 680    | 81    | 265,000 |
| + UB08528 | 85x28x9    | 2xGM6-71  | 610    | 66    | 450,000 |
| UB08533   | 85x33x11   | 2xGM12V92 | 900    | 81    | 370,000 |
| > UB09126 | 91x26x10   | 2GM16V92  | 1200 K | 79    | 840,000 |
| UB09600   | 96x24x11   | 2xGM12V71 | 680    | 75    | Request |
| UB10022   | 100x25x8   | 2xGM12V71 | 680    | 82    | 375,000 |
| UB10024   | 100x24x11  | 2xGM12V71 | 680    | 66    | 265,000 |
| + UB10034 | 100x24x-   | 2xGM12V71 | 680    | 72    | 600,000 |
| UB10324   | 103x24x10  | 2xGM16V71 | 910    | 78    | 475,000 |
| > UB10325 | 103x25x10  | 2xCAT3412 | 1050   | 80    | 525,000 |
| UB10326   | 103x25x10  | 2xGM16V71 | 910    | 74    | 525,000 |
| UB10502   | 110x24x10  | 2xGM12V71 | 680    | 71    | 500,000 |
| UB11004   | 116x26x10  | 2xGM16V92 | 1238   | 79    | 525,000 |
| UB11010   | 110x25x11  | 2xGM12V71 | 680    | 81    | Request |
| > UB11040 | 110x26x10  | 2xGM16V92 | 1200   | 82    | Request |
| UB11023   | 100x26x8   | 2xGM16V71 | 950    | 79    | 500,000 |
| > UB11040 | 110x28x11  | 2xKelvin  | 1040   | 82    | Request |
| > UB11043 | 110x26x11  | 2xGM16V71 | 910    | 82    | 525,000 |

| File      | Dimensions | Machinery  | HP     | Built | Price     |
|-----------|------------|------------|--------|-------|-----------|
| UB11045   | 110x26x11  | 2xGM16V92  | 1200   | -     | Request   |
| > UB11047 | 110x26x10  | 2xGM16V71  | 910    | 82    | 525,000   |
| UB11048   | 110x26x10  | 2xGM16V92  | 1200   | 80    | 550,000   |
| UB11049   | 110x26x10  | 2xGM16V92  | 1200   | 81    | 550,000   |
| > UB11127 | 111x28x10  | 2xDeutz    | 1200   | 78    | 475,000   |
| > UB11229 | 112x26x11  | 2xGM16V92  | 1200   | 81    | 315,000   |
| > UB11502 | 115x26x11  | 2xGM16V92  | 1200   | 81    | 485,000   |
| UB11824   | 118x24x9   | 2xGM16V71  | 910    | 70    | Request   |
| > UB11826 | 118x26x11  | 2xGM16V92  | 1200   | 80    | 370,000   |
| UB12026   | 120x26x-   | 2xGM16V71  | 910    | 79    | Request   |
| > UB12029 | 120x28x12  | 2xCATD379  | 1130   | 80    | 450,000   |
| > UB12035 | 120x26x9   | 2xGM16V92  | 1200   | 81    | Request   |
| > UB12036 | 120x28x8   | 2xGM16V92  | 1200   | 81    | 485,000   |
| UB12039   | 120x26x8   | 2xGM16V92  | 1200   | 78    | Request   |
| UB12200   | 122x27x8   | 2xCATD353  | 850    | 65    | 1,050,000 |
| UB12506   | 125x26x12  | 2xGM16V71  | 910    | 78    | Request   |
| > UB13518 | 135x19x12  | 2xMGO      | 2200 K | 72    | Request   |
| UB14026   | 140x26x10  | 2xGM12V149 | 1400   | 78    | Request   |

### Crew Boats

| File      | Dimensions | Machinery | HP    | Built | Price   |
|-----------|------------|-----------|-------|-------|---------|
| > CB01600 | 16x-x-     | 1xDAF     | 95    | 99    | Request |
| > CB02500 | 25x-x-     | 1xGM6-53  | 214   | -     | 65,000  |
| CB02912   | 29x10x-    | 2xGM6-71  | 228   | 77    | 28,000  |
| CB02913   | 29x8x-     | 1xGM6-71  | 228   | 74    | 33,000  |
| CB03100   | 31x-x-     | 2xYamaha  | 230   | 99    | Request |
| CB03112   | 31x10x6    | 1xGM6V53  | 320   | -     | 37,500  |
| CB03211   | 32x11x-    | 1xGM6-71  | 228 K | 69    | 26,000  |
| CB03213   | 31x11x5    | 1xGM12V71 | 240   | 79    | Request |
| CB03216   | 32x10x-    | 1xGM8V71  | 340   | 68    | 35,000  |
| CB03217   | 32x10x-    | 1xGM6-71  | 228   | 72    | 33,000  |
| CB03220   | 32x10x-    | 1xGM6-71  | 228   | 71    | 33,000  |
| ★ CB03512 | 35x12x6    | 2xVolvo   | 460   | 72    | 63,000  |
| > CB03812 | 38x12x7    | 2xVolvo   | 600   | 72    | 65,000  |
| CB03813   | 38x13x-    | 2xGM6-71  | 330   | 78    | 132,500 |
| + CB03814 | 38x14x5    | 2xGM6-71  | 360   | 54    | 75,000  |
| CB03915   | 40x13x6    | 2xGM8V71  | 460   | 63    | Request |
| CB04013   | 41x14x6    | 2xGM8V71  | 460   | 65    | Request |
| ★ CB04015 | 40x14x6    | 1xGM8V71  | 230   | 64    | 25,000  |
| + CB04017 | 40x14x6    | 2xGM6-71  | 360   | 57    | 66,000  |
| > CB04211 | 41x11x-    | 1xDAF     | 95    | 99    | Request |
| > CB04214 | 42x15x-    | 2xGM8V71  | 460   | 82    | 75,000  |
| > CB04217 | 42x15x-    | 2xGM8V92  | 900   | 81    | 150,000 |
| ★ CB04219 | 42x12x-    | 2xGM8V71  | 460   | -     | 110,000 |
| CB04236   | 42x14x5    | 2xGM6-71  | 330   | 78    | 150,000 |
| + CB04314 | 43x14x6    | 2xGM8V71  | 460   | 77    | 128,000 |
| > CB04517 | 46x17x11   | 2xCummins | 400   | 88    | Request |
| ★ CB04702 | 47x15x6    | 2xGM8V71  | 460   | 74    | 120,000 |
| ★ CB04717 | 47x15x7    | 2xGM8V92  | 600   | 81    | 205,000 |
| > CB04811 | 48x15x6    | 2xGM12V71 | 1020  | 80    | 70,000  |

+ Located West Coast   ★ Located East Coast   > Foreign Flag



| File      | Dimensions | Machinery  | HP   | Built | Price     |
|-----------|------------|------------|------|-------|-----------|
| + CB04814 | 48x14x5    | 2xGM8V71   | 460  | 63    | 70,000    |
| > CB04915 | 49x15x-    | 2xVolvo    | 644  | 76    | 152,000   |
| + CB05161 | 61x18x8    | 1xCATD379  | 510  | 64    | 110,000   |
| > CB05216 | 53x16x7    | 2xMTU      | 1068 | 94    | 860,000   |
| > CB05217 | 52x16x-    | 2xGM       | 650  | 75    | Offer     |
| > CB05218 | 52x16x7    | 2xMTU      | 1068 | 96    | 990,000   |
| > CB05515 | 55x15x5    | 2xGM12V71  | 680  | 82    | 200,000   |
| > CB05516 | 55x16x3    | 2xCAT3406  | 1200 | 02    | 625,000   |
| + CB06017 | 60x17x8    | 1xGM12V71  | 335  | 60    | 250,000   |
| > CB06414 | 64x15x9    | 2xScania   | 400  | 80    | Request   |
| + CB06417 | 64x17x11   | 1xGM12V71  | 440  | 58    | 250,000   |
| CB06516   | 65x16x8    | 2xGM12V71  | 1020 | 68    | Request   |
| > CB06518 | 65x19x4    | 2xMAN      | 1101 | 83    | Request   |
| + CB06521 | 65x18x6    | 2xGM6-71   | 360  | 69    | 135,000   |
| > CB06523 | 65x18x7    | 2xGM12V71  | 1000 | 76    | 175,000   |
| + CB07534 | 78x34x9    | 4xLugger   | 2432 | 97    | 475,000   |
| > CB07617 | 76x17x9    | 2xMWM      | 800  | 70    | Offer     |
| > CB07921 | 79x21x10   | 1xLister   | 335  | 70    | Offer     |
| CB08002   | 80x17x9    | 2xGM16V71  | 910  | 76    | 275,000   |
| > CB08118 | 81x18x9    | 2xMTU      | 1780 | 83    | 450,000   |
| > CB08219 | 82x19x10   | 2xMAN      | 2000 | 98    | Request   |
| > CB08221 | 82x21x5    | 2xGM12V92  | 1420 | 94    | Request   |
| CB09003   | 90x21x7    | 3xGM12V71  | 1530 | 72    | Request   |
| CB09021   | 90x21x9    | 3xGM12V71  | 1530 | 73    | 395,000   |
| > CB09725 | 98x26x8    | 2xGM16V71  | 910  | 80    | Request   |
| ★ CB10000 | 100x-x-    | 2xGM12V149 | 1400 | 69    | Request   |
| CB10001   | 100x24x10  | 3xGM12V71  | 1530 | 80    | 475,000   |
| CB10009   | 100x24x10  | 2xGM12V71  | 1530 | 78    | 475,000   |
| CB10013   | 100x23x9   | 3xGM12V71  | 1530 | 76    | 315,000   |
| > CB10020 | 100x21x10  | 3xGM16V149 | 1800 | 79    | 105,000   |
| CB10021   | 100x22x10  | None       | -    | 76    | 210,000   |
| > CB10027 | 100x22x9   | 3xGM12V71  | 1080 | 74    | 315,000   |
| > CB10028 | 100x22x9   | 3xGM12V71  | 1530 | 77    | 495,000   |
| > CB10031 | 100x22x9   | 3xGM12V71  | 1530 | 77    | 495,000   |
| CB10048   | 100x21x9   | 3xGM12V71  | 1530 | 77    | Request   |
| + CB10049 | 100x23x-   | 3xGM12V71  | 1530 | 81    | Request   |
| > CB10222 | 102x22x9   | 3xGM12V71  | 1530 | 92    | Request   |
| > CB10508 | 105x24x10  | 3xGM12V71  | 1530 | 81    | 595,000   |
| > CB10540 | 105x39x7   | 2xGM       | 3300 | 81    | Request   |
| CB10596   | 105x22x9   | 3xCAT3408  | 1500 | 75    | Request   |
| ★ CB11012 | 110x22x9   | 3xGM16V92  | 2820 | 76    | 475,000   |
| CB11016   | 110x25x8   | 4xGM12V71  | 2040 | 76    | Request   |
| CB11020   | 110x24x10  | 4xGM12V71  | 2040 | 80    | Request   |
| CB11055   | 110x39x-   | 2xGM16V149 | 3200 | 82    | 650,000   |
| > CB11059 | 110x24x10  | 4xGM12V71  | 2040 | 80    | Request   |
| CB11061   | 110x24x9   | 3xGM16V92  | 2820 | 80    | 475,000   |
| > CB11423 | 115x24x-   | 3xMTU      | 2400 | 81    | Request   |
| > CB12026 | 120x26x6   | 2xPaxman   | 4200 | 67    | Request   |
| CB12028   | 120x24x9   | 4xGM12V71  | 2040 | 80    | Request   |
| > CB12035 | 120x24x11  | 4xGM12V71  | 2040 | 83    | Request   |
| CB12525   | 125x25x11  | 4xCummins  | 2600 | 85    | Request   |
| > CB13532 | 135x26x13  | 2xGM16V92  | 1200 | 92    | 1,490,000 |

| Landing Crafts |            |              |      |       |           |
|----------------|------------|--------------|------|-------|-----------|
| File           | Dimensions | Machinery    | HP   | Built | Price     |
| + LC05617      | 56x14x-    | 2xGM6-71N    | 464  | 55    | Request   |
| + LC06014      | 60x14x-    | 2xGM6-71     | 330  | 66    | 85,000    |
| > LC06320      | 62x20x5    | 2x-          | 220  | 60    | Request   |
| + LC07021      | 70x21x-    | 4xGM6-71     | 660  | 56    | 99,000    |
| + LC07023      | 76x21x-    | 2xGM8V71     | 460  | 54    | 150,000   |
| + LC07221      | 72x12x-    | 2xGM12V71    | 680  | -     | 195,000   |
| ★ LC07404      | 74x21x8    | -            | -    | -     | 145,000   |
| + LC07421      | 74x21x5    | 4xGM6-71     | 660  | 54    | 52,500    |
| LC07501        | 75x21x8    | 4xGM6-71     | 720  | 54    | 185,000   |
| > LC08426      | 85x27x6    | 2xCAT3306    | 485  | 82    | Request   |
| > LC08829      | 88x30x6    | 2xGM         | 500  | 76    | Request   |
| > LC09124      | 91x24x6    | 2xGM12V71    | 1020 | 80    | 255,000   |
| > LC09824      | 98x24x7    | 2xCummins    | 700  | 70    | Request   |
| + LC10224      | 103x25x5   | 2xDongfeng   | 240  | 94    | Request   |
| > LC10424      | 105x24x6   | 2xCAT3306    | 470  | 82    | Request   |
| > LC11026      | 110x26x-   | 2xYanmar     | 330  | 93    | Request   |
| > LC11325      | 113x25x9   | 1xB&W        | 600  | 70    | 160,000   |
| > LC11435      | 115x35x-   | 2xCAT3406    | 600  | 91    | Request   |
| > LC11436      | 114x36x-   | 2xMWM        | 820  | 78    | 210,000   |
| > LC11831      | 119x31x-   | 2xYanmar     | 330  | 93    | Request   |
| > LC12426      | 124x26x6   | 2xMitsubishi | 480  | 95    | 367,500   |
| > LC12732      | 128x33x10  | 2xYanmar     | 640  | 48    | Request   |
| > LC13230      | 122x30x15  | 2xDeutz      | 598  | 81    | 315,000   |
| > LC13639      | 136x39x10  | 3xCAT        | 645  | 91    | 790,000   |
| > LC13929      | 139x29x-   | 2xMitsui     | 840  | 01    | 450,000   |
| > LC15540      | 155x40x10  | 2xCummins    | 700  | 94    | 500,000   |
| > LC15845      | 159x45x11  | 2xCAT3406    | 940  | 93    | 890,000   |
| > LC16033      | 169x33x9   | 2xGM16V71    | 910  | 80    | Request   |
| > LC16039      | 148x39x10  | 2xCAT3412    | 1248 | 84    | 1,500,000 |
| > LC16229      | 162x29x-   | 2xYanmar     | 660  | 91    | 450,000   |
| > LC16344      | 164x45x-   | 2xVolvo      | 320  | 65    | 475,000   |
| > LC16435      | 164x35x8   | 2xYanmar     | 650  | 99    | 950,000   |
| > LC16436      | 164x35x8   | 2xCummins    | 700  | 94    | 775,000   |
| > LC16439      | 148x39x10  | 2xCAT3408    | 730  | 82    | 1,000,000 |
| > LC16933      | 169x34x8   | 2xCummins    | 630  | 71    | Request   |
| > LC17900      | 179x45x11  | 2xCAT3412    | 1240 | 94    | 1,000,000 |
| > LC18033      | 180x33x12  | 2xMTU        | 1700 | 99    | Request   |
| > LC18535      | 185x35x8   | 2xCAT3406    | 800  | 97    | 600,000   |
| > LC19037      | 190x36x17  | 2xB&W        | 3720 | -     | Request   |
| > LC20036      | 200x36x-   | 2xNissan     | 840  | 60    | 675,500   |
| > LC20039      | 200x39x11  | 2xCAT3412    | 1350 | 85    | Request   |
| > LC20138      | 207x38x11  | 2xCAT3412    | 1362 | 92    | 890,000   |
| > LC20649      | 206x48x-   | 2xCAT3412    | 1342 | 95    | Request   |
| > LC20949      | 209x49x13  | 2xMWM        | 1341 | 00    | Request   |
| > LC25844      | 258x45x28  | 2xCATD399    | 2000 | 69    | Request   |
| > LC26655      | 266x55x-   | 2xSKL        | 408  | -     | 520,000   |
| > LC26752      | 267x51x16  | 3xCATD398    | 2550 | 70    | Request   |
| > LC26754      | 267x51x-   | 3xCAT        | 2295 | 70    | Request   |
| > LC27862      | 279x62x10  | 2xCummins    | 1200 | 98    | 800,000   |

Details believed correct, not guaranteed. Offered subject to prior sale or charter.

+ Located West Coast   ★ Located East Coast   > Foreign Flag

# Research, Dive & Rescue

| File      | Dimensions | Machinery       | HP     | Built | Price     |
|-----------|------------|-----------------|--------|-------|-----------|
| + RV00805 | 8x5x-      | -               | -      | 99    | Request   |
| RV06319   | 63x18x6    | 2xDaytona       | 1150   | 96    | 200,000   |
| + RV07621 | 76x26x-    | 2xGM8V71        | 460    | 66    | 470,000   |
| + RV09338 | 93x38x-    | 4xCAT3208       | 1120   | 91    | 190,000   |
| + RV10600 | 106x26x13  | 1xCATD398       | 850    | 84    | 525,000   |
| ★ RV11828 | 118x28x12  | 1xCATD398       | 765    | 67    | Request   |
| > RV12001 | 120x36x8   | 2xGM12V71       | 680    | 82    | Request   |
| > RV12827 | 128x28x11  | 2xYanmar        | 2200 K | 82    | Request   |
| > RV13030 | 130x30x19  | 1xRuston        | 1658   | 75    | 445,000   |
| > RV13425 | 134x25x8   | 1xMWM           | 193    | 55    | Offer     |
| > RV13429 | 134x29x14  | 2xCATD398       | 1700 K | 81    | 1,500,000 |
| + RV13500 | 135x50x4   | 2xCAT3408       | 900    | 98    | Request   |
| > RV13729 | 137x30x13  | 1xWichmann      | 883    | 71    | 520,000   |
| RV14336   | 143x36x10  | 2xCAT3412       | 1875   | 82    | Request   |
| RV15034   | 150x34x16  | 2xCATD398       | 1700   | 82    | Request   |
| > RV15035 | 150x32x10  | 2xGM12V149      | 1340   | 82    | Request   |
| > RV15278 | 152x28x13  | 2xGM16V71       | 910    | 69    | 790,000   |
| RV15637   | 156x38x13  | 2xCAT399        | 2250   | 82    | 685,000   |
| > RV16033 | 159x33x12  | 2xLister        | 1700   | 65    | 220,000   |
| > RV16238 | 190x37x19  | 4xLister        | 2400   | 68    | Request   |
| > RV17137 | 171x37x14  | 2xLister        | 1600   | 66    | Request   |
| > RV17332 | 177x32x13  | 2xEMD12567      | 2460   | 66    | 320,000   |
| + RV17510 | 176x38x13  | 2xCATD398       | 1700   | 77    | Request   |
| > RV17737 | 177x37x-   | 2xLister        | 2400   | 69    | 650,000   |
| RV17838   | 178x38x15  | 2xLister        | 2400   | 70    | 400,000   |
| > RV18101 | 181x38x15  | 2xAllen         | 2500   | 74    | 1,500,000 |
| > RV18540 | 185x38x15  | 2xCATD399       | 2250   | 76    | 1,400,000 |
| > RV18545 | 185x45x17  | 2xRuston        | 5300 K | 72    | 3,400,000 |
| > RV19417 | 194x40x17  | 2xCAT3606       | 4800   | 74    | 1,565,000 |
| RV19420   | 193x43x20  | 2xAlpha         | 3100   | 78    | Request   |
| > RV19840 | 197x40x17  | 2xEMD12645      | 3000 K | 81    | Request   |
| RV21014   | 210x40x14  | 2xCAT3516       | 3000   | 82    | Request   |
| RV21051   | 210x50x13  | 2xSulzer        | 1520   | 86    | Request   |
| > RV22343 | 224x44x23  | 3xBritish Polar | 3600 K | 71    | 3,250,000 |
| RV22542   | 220x42x15  | 2xCAT3516       | 3100   | 85    | Request   |
| > RV23439 | 234x40x21  | 4xFairbanks     | 10560  | 88R   | Request   |
| > RV24751 | 246x51x19  | 4xBergen        | 3200   | 82    | Request   |
| > RV24848 | 248x48x20  | 2xBergen        | 6400   | 91    | Request   |
| > RV24939 | 249x39x18  | 1xMAN           | 2110   | 65    | 2,500,000 |
| > RV24940 | 249x39x15  | 2xDaihatsu      | 4200   | 76    | 1,500,000 |
| RV26142   | 261x42x19  | 2xEMD12645      | 4300   | 74    | Request   |
| > RV26759 | 267x59x23  | 2xPolar Nohab   | 5300 K | 82    | 5,150,000 |
| > RV27256 | 272x56x-   | 2xBergen        | 6500   | 93    | Request   |
| > RV27752 | 277x53x23  | 4xHedemora      | 7200   | 75    | Request   |
| > RV32658 | 326x58x19  | 2xDaihatsu      | 5600   | 78    | Request   |
| > RV36760 | 367x60x38  | 2xPielstick     | 8000   | 73    | Request   |
| > RV42757 | 427x57x-   | 1xB&W           | 6100   | 81    | Request   |
| > RV52173 | 521x73x-   | 2xSulzer        | 15600  | 86    | 5,000,000 |
| > RV59088 | 591x89x55  | 1xPielstick     | 16600  | 88    | Request   |

Ask For Details On Other Categories  
 Published Listings Only A Portion Of Those Available  
 Listings Updated Daily On Internet

Presorted Standard  
 U.S. Postage  
 PAID  
 Coupeville, WA 98239  
 Permit No. 43

MARCON INTERNATIONAL, INC.  
 P.O. Box 1170, 9 NW Front Street  
 Coupeville, Washington 98239-1170  
 Address Service Requested

DB40105 - Ocean House Barge

