



# Marcon International, Inc. NEWSLETTER

## WINTER 2023

Phone: (360) 678-8880  
Fax: (360) 678-8890

Website: [www.marcon.com](http://www.marcon.com)  
Email: [info@marcon.com](mailto:info@marcon.com)

Past Newsletters  
available in PDF  
format at  
[www.marcon.com](http://www.marcon.com)

### Table of Contents

Article	1, 13 & 14
Towing & Barges	2-6
Offshore Support	6-13
Recent Sales	14

For more extensive  
listings of Vessels and  
Barges, including  
photos, surveys,  
drawings, etc.,  
visit our website at  
[www.marcon.com](http://www.marcon.com)

### Offshore Supply Market Update

By: Marcon Staff

The offshore oilfield market has continued to make marked improvement since our last offshore supply market report in November 2022, and shows no signs of abeyance looking into the future. Rates continue to strengthen and vessel sales into and out of the oilfield market continue to move at a rapid pace. There are recent reports of continuing consolidation, including the March 7<sup>th</sup>, 2023 Solstad Offshore press release of Tidewater Marine's recent purchase announcement of Solstad's PSV fleet. The purchase includes the entirety of Solstad Offshore's PSV fleet - some 37 - for upwards of US \$577 million in cash and new debt on hand. These sort of deals, coupled with continued retirement and disposal of last generation's PSVs will continue to tighten up available vessels in the market and these actions, which have been ongoing for the past several years, will continue to strengthen daily hire rates and utilization rates domestically in the US and worldwide. It's interesting to note that reportedly 14 of the Solstad Offshore vessels were identified as 'battery hybrids', which also shows a continuing direction that the industry leaders are taking in an effort to try and trim greenhouse gas emissions from their fleet's services. Along with alternatively powered vessels, ammonia for one, and even all electric tonnage coming into the markets are also being noted in maritime fleets and intentions worldwide. This should continue to strengthen new technology developments on many fronts. Coupled with renewed and strengthening demand for reliable hydrocarbon sources for post-Covid reopening and emerging economies, and the lack of investment in new sources over the past several years, post 2016 oil price collapse, and earlier demand drops should continue to strengthen demand for tonnage as we move forward through 2023. Hydrocarbon demand production is expected to remain strong for the foreseeable future, despite the opening of new alternative energy markets and expanding production in other sectors.

Marcon was involved in several sales since our last report including a pair of 265' AHTS vessels into alternative services. Marcon was not involved in this sale, but Northstar Marine Inc. of Clermont, New Jersey recently announced the purchase of the 265' AHTS vessel "Northstar Navigator" (ex-Keith Cowan) for continued service in the US Northeast offshore wind farm market, which is really taking hold after years of preparation and stuttered starts. Despite newbuilding announcements for purpose built and dedicated offshore wind service vessels being announced, we expect that these sorts of sale events will continue as there is a dedicated effort for transition to new and alternative energy sources. This will require the combined services of large offshore players to support continued developments in this sector. Along these lines, Fincantieri, through its U.S. subsidiary Fincantieri Marine Group in Sturgeon Bay, Wisconsin announced the new-build contract for a purpose built Service Operation Vessel (SOV) on January 18, 2023 with CREST Wind, a joint venture between Crowley and ESVAGT. The 288' LOA vessel is expected to go into service in 2026, and is to be dedicated to the Dominion Energy Coastal Virginia Offshore Wind project under long-term charter. The expected increase in offshore wind production capacities in the US will continue to drive major developments as this specific segment comes online and grows, playing catch up with Europe and Asia in this rapidly developing and expanding market. The US Department of Interior announced on February 22, 2023 that it is proposing the first-ever offshore wind lease sale in the Gulf of Mexico. This proposed sale was made in an effort to support the stated goal of increasing offshore wind for the goal of increasing the capacity and deployment

(Continued on page 13)

### Featured Listings



**DB40100**  
Deck Barge - Ocean



**SU15060**  
Supply Boat



**SU20740**  
Supply Boat - AHTS



**TB81833**  
Double Hull  
Tank Barge - Ocean



**TG57009**  
Tug - Twin Screw



**TP39096**  
Push Boat



## Towing & Barges



**File: [TG15002](#) Tug - Single Screw:** 87.0' x 81.1' lbp x 24.0' x 9.8' x 9.80' loaded draft. Built in 1943 by George Lawley & Son; MA. U.S. flag. GRT: 139. NRT: 94. FO: 29,300g. LO: 1,000g. FW: 2,000g. 100lb Danforth anchor. Winch: Single Drum/GM3-71 powered. Wire: 1,650' x 1.75". M/E: 1 x EMD 12-645E2 total 1,500BHP at 900RPM. Falk 3:1 gears. 80" x 76" Lips 5-blade SS props on 9" shafts. Kort nozzles. M/E & gear re-built 1999. BP: 22.5T. Speed 12kn max. Gensets: 2 - 60kW / 208-220vAC. Quarters: 5. Welded steel construction. Steerable kort nozzle hydraulically powered. 20' height of eye. Stacked. U.S. West Coast. **\$5,250.**



**File: [TG22131](#) Tug - Twin Screw:** 110.5' x 34.1' x 13.1' x 12.80' loaded draft. Built in 1976 by Allied Shipbuilders; BC. Canada flag. GRT: 395. NRT: 45. Transport Canada Near Coastal Class 2. Annual Safety Inspection due 03/23; Drydock due 01/23. Dwt: 250T. 46.5m2 clear deck. FO: 221m3. FW: 16.9m3. 2 - 600kg Danforth anchors. Wire/Chain: 165m x 25.4mm. Windlass: 2 - Harrison & Robbins. Winch: Burrard HF-D dbl drum. Line Pull: 24.7T. Wire: 760m x 44.5mm. M/Es: 2 x CAT D399TA total 2,250BHP at 1,225RPM. Lufkin RS2520 4.74:1 gears. 2 - 83.3" x 79.3" FP props. Kort nozzles. BP: 27.2T. Speed 8-13kn on 5.77-8.46T. Gensets: 2 - 125kW / CAT 3306T 480v 60Hz 3ph. Fifi: 682Lpm fire / ballast pump. 10 in 9 cabins. AirCon. Upper pilothouse in 2005. Ex-LR 100 A1 Tug Ice Class 1 Arctic Type A. Hydraulic towing pins with 12" roller. **Canada West Coast.**



**File: [TG24161](#) Tug - Twin Screw:** 100.0' x 82.5' lbp x 27.1' x 12.0'. Built in 1968 by Main Iron Works, LA. U.S. flag. GRT: 149. NRT: 101. ABS Loadline. FO: 32,000g. LO: 758g. FW: 5,000g. 2 - Patterson barge winches. Wire: 100' x 1-1/8". M/Es: 2 x CAT 3512 total 2,400BHP at 1,200RPM. Lufkin RS-2118 5.222:1 gears. 88" x 66" 4-blade stainless props. M/Es rebuilt 2008 starboard and 2010 port. Gensets: 1 - 75kW / GM4-71 (port); 1 - 55kW / GM4-71 (stbd). 4 cabins. AirCon. 24' height of eye. Vertical capstan aft. U.S. East Coast.



**File: [TG30137](#) Tug - Azimuthing:** 105.3' x 29.9' x 12.9'. Built in 1993 by Kanagawa Zosen; Japan. Singapore flag. GRT: 261. NRT: 78. BV I. SS due 11/2023. FO: 150m3. FW: 50m3. M/Es: 2 x Niigata 6L25CX total 3,100BHP at 720RPM. 2 - Z-peller props. Gensets: 2 - 81kW / Yanmar. Equipped for firefighting. **Southeast Asia.**



**File: [TG32246](#) Tug - Azimuthing:** 114.3' x 31.5' x 13.8'. Built in 1975 by Sagami Shipbldg Co; Japan. Egypt flag. GRT: 291. NRT: 107. ABS +A1, Towing, AMS, Coastwise. Laid up, actively classed. Docking, Annual & Special Surveys overdue 2013. FO: 42m3. LO: 7m3. FW: 35m3. 2 - 420kg anchors. Wire/Chain Dia.: 26mm. Windlass: 30T @ 15m/min. Winch: 60T brake fore & aft. M/Es: 2 x Niigata 8L25BX total 3,200BHP at 720RPM. 2 - 2,000mm Niigata ZP-3A props. 45.8T BP astern. BP: 50.2T. Speed 13.8kn. Pumps: FO, FW, Bilge and LO. Gensets: 2 - 100kVA / MWM 225vAC, 2 - 17.5kVA / MWM 230VAC 60Hz 3Ph. Fifi: 2 - 240m3/hr pumps. 3-1 & 1-7 berths. AirCon. Two 30 person life rafts. **Mid East.**



**File: [TG39139](#) Tug - Twin Screw:** 139.0' x 34.0' x 17.2'. Built in 1976 by Burton Shipyard; TX. Rebuilt: 2000. U.S. flag. GRT: 198. NRT: 135. ABS +A1 Towing exp. 05/2025. USCG COI exp. 09/2024. Dwt: 636lt. FO: 129,600g. LO: 8,100g. FW: 21,300g. BW: 122,400g. 1 - 2,000lb anchors. Wire/Chain: 1,080'. Windlass: Superior S360. Winch: Intercon dbl drum. Line Pull: 100T. Wire: 2 - 2,500' x 2". M/Es: 2 x EMD 16-645E6 total 3,900BHP at 900RPM. Reintjes 4.5:1 gears. 2 - FP 115" x 90" 4-blade props. BP: 50T. Speed 10kn on 165gph. Gensets: 2 - 100kW. 14 in 6 rooms. Aluminum upper pilothouse. 51' min/54.9' max height above water. 6' x 2' stern roller. Tow pins. Open wheels. JAK 400 system pins still installed and could be made operational. U.S. Southeast.

Details believed correct, not guaranteed. Offered subject to prior sale or charter.



## Towing & Barges, Continued



**File: [TG43126](#) Tug - ATB - Twin Screw:** 126.0' x 34.0' x 16.5'. Built in 1973 by McDermott SY; LA. U.S. flag. GRT: 198. NRT: 134. ABS +A1 Towing Service, +AMS, Unrestricted. D/D overdue 2017. S/S overdue 2018. FO: 100,000g. LO: 6,000g. FW: 4,200g. No winch. M/Es: 2 x EMD 12-645E5 total 4,300BHP at 900RPM. Falk gears. 2 - FP props. Open wheel. BP: 43mt. Gensets: 2 - 85kW / GM6-71. AirCon. Raised pilothouse. Air draft 75'. JAK-400 linkage system. ITC Tonnage: 432G / 129 N. Laid-up. Previously married to 80,000bbl barge. **U.S. Gulf Coast.**



**File: [TG44038](#) Tug - Twin Screw:** 131.2' x 38.7' x 15.1'. Built in 2021 by Malaysian SY. Foreign flag. IACS. Dwt: 345mt. 150m3 clear deck. Deck Load: 5T/m2. FO: 370m3. FW: 100m3. BW: 43m3. 2 - 900kg anchors. Windlass: Elect./Hydr. Crane: 3T Hydraulic with 5m outreach. Winch: Dbl Drum Waterfall - 150mt Brake. Line Pull: 75mt. Wire: 1,000m x 50mm. Stern Roller. M/Es: 2 x Cummins QSK60-M Tier I total 4,400BHP at 1,800RPM. Reintjes WAF-773 7.087:1 gears. 2 - 4 blade FP props. Kort nozzles. Bowthruster 5T. BP: 53mt. Speed 12kn. Gensets: 3 - 143kW / CAT C6.6 415V/3PH. FiFi-1/2, 2 - 1,200m3/hr. monitors. Quarters: 20 in 2-1, 1-2, 4-4 bed cabins. AirCon. Anchor Handling tug. Newbuild resale from owner. 200mt Shark Jaws / Tow Pins. 2 - 5mt tuggers and 2 - 5mt capstans. To be completed at the shipyard after contract and deposit lodged. Details available on request. **Southeast Asia.**



**File: [TG57009](#) Tug - Twin Screw:** 136.2' x 36.5' x 17.00' loaded draft. Built in 1978 by McDermott SY; LA. U.S. flag. GRT: 199. NRT: 135. ABS +A1, Towing Unrestricted Service, +AMS. USCG COI Sub M. FO: 218,000g. LO: 2,660g. FW: 15,800g. 1 - 750lb anchors. Wire/Chain: 150fm x 1.25". Windlass: Markey hydraulic. Winch: Markey TDSD-36 dbl drum. Wire: 2,200' x 2.25" & 2,800' x 2.125". M/Es: 2 x EMD 16-645E7A Tier 2 total 5,750BHP at 900RPM. Falk 3040 4.5:1 gears. 120" x 80-90" 5-blade props. Speed 15kn free. Gensets: 2-99kW / John Deere 4.5L 2841F Tier 2 120/208vAC 3ph 60Hz. Quarters: 8. Triple rudders. M/Es have Tier 2 MDEC electronic upgrade. ITC: 563G / 168N. SOLAS Exempt. **U.S. Northwest.**



**File: [TG65136](#) Tug - Twin Screw:** 136.0' x 34.0' x 20.0'. Built in 1976 by Service Machine; LA. Rebuilt: 1991. U.S. flag. GRT: 163. NRT: 111. ABS L/L. Laid-up. FO: 150,000g. LO: 1,400g. FW: 12,000g. 1 - 1,000lb anchor. Windlass: McElroy MSW-AW 528H. Winch: Intercon DD225/GM 6-71. Line Pull: 60T Brake. Stern Roller. M/Es: 2 x EMD 16-645E5 total 5,700BHP at 900RPM. Engines rebuilt 2003. Reintjes WAV 3400; 5.05:1 gears. 138" x 94" 4-blade SS props. Inboard turning props. Shaft brakes 38VC 1200 Split. Gensets: 2 - 99kW / John Deere 6068-75 280vAC. Steering: Elec/hyd. 12 in 7 cabins. Bow pud, "D" fendering. Dbl chine hull design. Keel coolers. **U.S. Northwest.**



**File: [TP39096](#) Push Boat:** 96.0' x 34.0' x 10.8'. Built in 2022 by Main Iron Works Inc; LA USA. U.S. flag. USCG Sub M COI. FO: 31,000g. LO: 662g. FW: 7,806g. Winch: 4 - 40T Nabrico electric. M/Es: 3 x Cummins QSK38 Tier 3 total 3,900BHP at 1,800RPM. Twin Disc MGX 5321 5:96:1 gears. 3 - 72' x 65" 5-blade SS props on 7" shafts. Gensets: 2 - 99kW Northern Lights. AirCon. Newbuild inland river pushboat. Height of eye - 48'. 9' operating draft. Flanking rudders. Fleet deck. Full electronics. Survey. **U.S. Gulf Coast.**



**File: [UB08543](#) Multicat - Twin Screw:** 85.3' x 36.1' x 10.8'. Built in 2003 by ASL Shipyard Pte Ltd; Singapore. St Kitts/Nevis flag. GRT: 218. NRT: 66. DNV-GL +100 A5. SS due 10/2024. Dwt: 250T. Light Disp.: 280T. FO: 158m3. FW: 83m3. Windlass: 2 - 3T x 15m/min. Crane: Heila HLRM 140-3s, 32T-10T at max. Hyd. Winch: 100T x 5m Towing / Anchor Handling. Wire: 500m x 70 mm. M/Es: 2 x CAT 3412TA total 1,440BHP. 2 - Reintjes 363; 4.92:1 gears. 2 - FP 4-blades props. BP: 14T. Speed 9kn. Pumps: FO: 1 - 20m3/h @ 15m head. Gensets: 2 - 80KW / Perkins. 1-2 & 2-3 bed cabins. Multicat type 2611 multi-purpose tug / workboat. Complete refit including new crew quarters following the European standard in 2017-2018. SWL 20mt towing hook. Roller fitted at bow 600mm. 3mt @ 15m/min capstan. **Europe.**



## Towing & Barges, Continued



**File: [DB19061](#) Deck Barge - Ocean:** 190.0' x 60.0' x 12.0'. Built in 2009 by LAD Service LLC; LA. U.S. flag. GRT: 1,008. NRT: 302. ABS + A1 Barge. Dwt: 2,401lt. Lt Displ: 522lt. Deck Load: 2,400lb/ft<sup>2</sup>. Rakes: Double. Bulkheads: 2 long'l / 5 transv. Watertight Compartments: 14. All welded steel construction. Flat deck, square raked bow and stern, two skegs, straight sides. Rub rails both sides. One 18" manhole per compartment. One 12" double bitt at each corner. 4 x 36" kevels per side. 1/2" deck, bottom, side plate, 3/4" headlog & sternlog plate; 3/8" bulkhead plate. Black epoxy external coating and compound H internal coating. **U.S. Gulf Coast.**



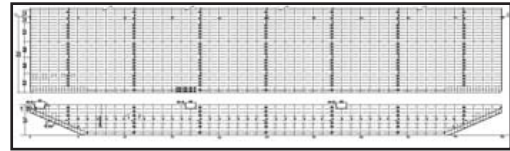
**File: [DB19769](#) Deck Barge - Coastal:** 197.8' x 51.2' x 14.3'. Built in 2016 by Astivik S.A.; Columbia. Foreign flag. Colombia SAC L/L - Deck barge. Dwt: 2,500lt. Rakes: Bow. Steel flat deck cargo barge built out of existing hopper barge. 3/4' double bottom, no ballast. Flat bow rake & square stern. Barely used since built. Deck and structure new. Needs repairs. **Caribbean.**



**File: [DB23062](#) Deck Barge - Ocean:** 230.0' x 64.0' x 14.0'. Built in 2010 by PT TWC Bintan; Indonesia. U.K. flag. GRT: 1,459. NRT: 438. DNV-GL + 100 A5 Pontoon Barge exp 04/2025. Dwt: 3,541. Deck Load: 15T/m<sup>2</sup>. 2-8,000lb, 1-5,000lb anchor. Crane: IHI Hydraulic CCH 2800 - 280T max lift. 147.6' boom. Winch: 2 - TXEME 687 dual opposed, Brake Holding 175,000lbs, 1 - 15T single drum. Flat deck barge outfitted with winch system for 3-point mooring and scrawler crane. **Mediterranean.**



**File: [DB24050](#) / [DB24051](#) Deck Barge - Ocean (Two Available):** 240.0' x 53.0' x 14.0'. Built in 2009 by Conrad Shipyard; LA, USA. Vanuatu flag. GRT: 1,284. NRT: 385. BV I + Hull Pontoon, Unrestricted Navigation Exp. 10/2022. Dwt: 2,959lt. Lt Displ: 569lt. Deck Load: 1,500lb/ft<sup>2</sup>. Rakes: Double. Bulkheads: 6 transv / 2 long'l. Watertight Compartments: 17. Reportedly in like new condition. **U.S. Gulf Coast.**



**File: [DB25021](#) / [DB25022](#) Deck Barge - Ocean (Two Available):** 250.0' x 80.0' x 16.0'. Built in 2014 by Yangzhou Topniche Shipbldg Co Ltd; China. Mexico flag. GRT: 2,314. NRT: 694. ABS +A1 Barge. DD due 04/2024. Dwt: 5,427st. Deck Load: 4,095lbs/ft<sup>2</sup>. Rakes: Double. Bulkheads: 7 Transv / 1 Long. Flat deck ocean deck barges. All void spaces are coated and suitable for ballasting. **Mexico East Coast.**



**File: [DB25061](#) Deck Barge - Ocean:** 250.0' x 72.0' x 16.0'. Built in 2006 by Jing Jiang Nanyang; China. Mexico flag. GRT: 2,150. NRT: 645. ABS + A1 Cargo Barge exp. 08/2026. Dwt: 4,733mt. Lt Displ: 1,222T. Deck Load: 3,000lb/ft<sup>2</sup>. Bulkheads: 3 long'l / 7 transv. Watertight Compartments: 24. 1 - 1.59T Jianghai CBZ-60 anchors. Wire/Chain: 200m x 1.25". All welded steel construction. Raked bow and stern with skegs, straight sides and flat deck. Compartment access via oval, multi-bolt manholes per each. 2 x 9" split pipe rubrails per side. 22 tires suspended with drains per side. Deckhouse for anchor winch & engine fitted on stbd side of bow. Four single bitts, four double bitts, pair of Smit type towing bracelets bow & stern with adjacent closed chocks on bow. Anchor winch driven by & Changzhou model CZ2102, diesel engine. **U.S. Gulf Coast.**



**File: [DB28084](#) Deck Barge - Ocean:** 280.0' x 80.0' x 18.0'. Built in 2010. Australia flag. GRT: 2,620. BV I Hull, Pontoon. Dwt: 5,908mt. Lt Displ: 1,366mt. Deck Load: 15mt/m<sup>2</sup>. 1,500kg stockless bower anchor. A-Frame forward. Winch: 1 - manual anchor. Flat top deck cargo barge. Three forward Smit brackets. Nine deck type mooring bollards. Hydraulic recovery winch forward. Sidewall. Cemented deck. Tire fenders. **By Arrangement.**



**File: [DB28093](#) Deck Barge - Ocean:** 280.0' x 90.0' x 18.0'. Built in 2010. Australia flag. GRT: 3,709. ABS A1 Barge. Dwt: 8,020mt. Lt Displ: 1,840mt. Deck Load: 15mt/m<sup>2</sup>. 2,100kg stockless bower anchor. A-Frame forward. Winch: 1 - hydraulic anchor. Ballastable flat top deck cargo barge. Steel barge. Three forward Smit brackets. Eight deck type mooring bollards. Hydraulic recovery winch forward. Sidewall. Cemented deck. Tire fenders. **By Arrangement.**

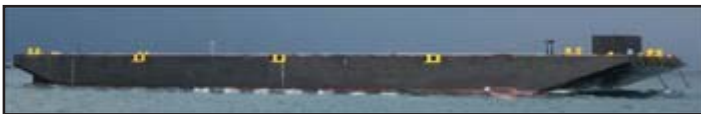
Details believed correct, not guaranteed. Offered subject to prior sale or charter.



## Towing & Barges, Continued



**File: DB30084 Deck Barge - Ocean:** 300.0' x 80.0' x 18.0'. Built in 2010 by Nanjing Wujiang SY; China. Vanuatu flag. GRT: 3,105. NRT: 931. RINA C +Hull, Pontoon, Unrestricted. Dwt: 7,361lt. Lt Displ: 1,205lt. Deck Load: 2,000lb/ft2. Rakes: Double. Bulkheads: 8 transv / 3 long'l. Rock barge with ramp and 11' bin walls. Ramp is 29.5' x 16.4'. Towing sklegs aft. **U.S. Gulf Coast. June 2023.**



**File: DB30150 Deck Barge - Ocean:** 300.0' x 100.0' x 18.0'. Built in 2014 by Nantong Tongmao Shipblg.; China. Vanuatu flag. GRT: 3,924. NRT: 1,177. ABS +A1 Barge Unrestricted Service. Expires 07/2024. Dwt: 7,800T. Lt Displ: 1,755T. 2,678M2 clear deck. Deck Load: 20T/m2. Rakes: Double. Bulkheads: 3 long'l / 6 transv. Water-tight Compartments: 28. BW: 12,130m3. 1,000kg stockless bower anchor. Wire/Chain: 200m. Wire/Chain Dia.: 38mm. Winch: 1 - 10T diesel driven anchor. Flat deck cargo barge. Four 20T SWL Smit towing brackets. Recessed bits. All internal void spaces coated. Tank scantlings designed for carrying ballast. Reportedly in good overall condition. **Mediterranean.**



**File: DB40100 Deck Barge - Ocean:** 400.0' x 99.5' x 25.0'. Built in 1981 by FMC Corp, Marine & Rail Div; OR USA. Canada flag. GRT: 7,339. NRT: 2,201. Ex-ABS Ocean (dropped as not required for Canada). Dwt: 16,000mt. Lt Displ: 2,930lt. Deck Load: 1,639lbs./ft2 (8mt/m2). Rakes: double, sklegs aft. Bulkheads: 2 long'l / 8 transv. FO: 4,000g. Gensets. Deck Barge. Converted from single skin 149,000 BBL tank barge. Small notch aft. ITC - 7132 G / 6574 N. Sold to current Owner via Marcon. Steel deck. Deck strength 1,639lbs./ft2 (8mt/sqm). Last drydocked in Spring of 2020 when purchased by the current owner. Formerly US flag with ABS class and loadline. Loadline dropped in 2020 when imported to Canada since not required. Reportedly in very good condition. Available for sale, charter, or charter/purchase. Offered exclusively by Marcon. **Canada West Coast.**



**File: DK14060 Crane Barge - Inland:** 140.0' x 60.0' x 10.0'. Built in 1945 by Odenbach Shipbldg. U.S. flag. Rakes: Bow only. Bulkheads: 1 Long / 6 Trav. US Navy Stockless anchors. Windlass. 65T revolving crane with 25HP Swing Motor (operational but not certified). Winch: 3 Drum 75HP. Gensets: 1 - GM 6-71NT; 200KW. Undocumented Ex US Navy Derrick Barge for sale. Bow capstan. Two Fuel tanks. 2011 Survey available. Available with or without crane. Spud wells installed Feb. 2018. Currently working. Needs painting. **U.S. East Coast.**



**File: DK24970 Crane Barge - Ocean:** 250.0' x 68.9' x 18.0'. Built in 1967 by Equitable-Higgins SY; LA, USA. Panama flag. GRT: 2,055. NRT: 616. DNV GL +100 A5. Exp. 08/2026. 900m2 clear deck. Deck Load: 10mt/m2. FO: 360m3. FW: 125m3. BW: 3,385m3. 4 - 5T anchors. Crane: Clyde 37 - 250T @ 18m. Winch: 2 - Skagit RB90, triple drum, 35T line pull. Gensets: 2 - 345kVA, 60Hz; 1 - 68kVA, 60Hz Cummins; 1 - 70kVA Deutz. 10 in 5 two bed cabins. Heavy Lift Crane Barge. Offshore; cable laying; bridging; lock gates; salvage; piling; civil contracting; demolition. Air draft 78.7'. 4-point mooring. **Europe.**



**File: MB05949 Jack-Up Barge:** 59.1' x 49.4' x 5.0'. Foreign flag. Up to 80mt on 242m2 clear deck. Deck Load: 15mt/m2. Modular self-elevating platform with corner mounted spud wells. Suitable for near shore various kind of drilling works, soil investigation campaigns as well as marine construction. The platform has 27m legs offering a free leg length of approximately 23m. Additional deck equipment as winches, bollards, fairleads and piling gates can be easily installed with the standard coupling systems. Shippable by road, rail or sea. **Europe.**



**File: MB09859 Jack-Up Barge:** 98.4' x 59.1' x 7.0'. Foreign flag. Up to 400mt on 410m2 clear deck. Deck Load: 15T/m2. Modular self-elevating platform. 38.5m legs. Suitable for near shore construction work such as newbuilding or maintenance work on jetties, breakwaters & piling. Additional deck equipment can be easily installed with the standard coupling systems. **Mid East.**



## Towing & Barges, Continued



**File: MB11888 Jack-Up Barge:** 118.1' x 88.6' x 9.6'. Foreign flag. 1,000mt on 910m2 clear deck. Deck Load: 15mt/m2. Modular self-elevating platform designed for near shore heavy marine construction works such as construction and maintenance works on jetties, breakwaters & piling activities. 58m legs. **Mid East. Prompt.**



**File: TB80042 Double Hull Tank Barge - Ocean:** 337.0' x 74.0' x 25.0'. Built in 2006 by Senesco Marine Inc.; RI. U.S. flag. GRT: 5,855. NRT: 3,938. ABS +A1 Oil Barge, Exp. 06/2026, Next DD due 05/2024, USCG COI Exp. 06/2026. Dwt: 11,745T. Lt Displ: 1,922lt. Capacity: 84,000bbl. Tanks: 10. Uncoiled. Pumps: 2 - 12" Byron Jackson LS4 / John Deere L1276: Max 10,000 BBL/h. 5,000lbs anchors. Windlass: Hyd bow anchor. Crane: 2 -2T hose cranes. Gensets: 1 - 55kW / Northern Lights. Double hulled ocean tank barge. Average pumping rate 4500/bph each pump. About 82,663 BBL @ 95%. EMS radar gauging; EMS high level / overflow alarm; MMC closed tape gauging; 2 - 60T push / tow winches; 2 - hyd capstans. USCG COI Grade A and lower. 53.37 ST TPI. **U.S. West Coast.**



**File: TB81833 Double Hull Tank Barge - Ocean:** 332.0' x 74.0' x 25.0'. Built in 2002 by Friede Goldman Halter; MS. U.S. flag. GRT: 5,790. NRT: 3,846. ABS+A1, Oil Tank Barge Unrestricted. USCG COI Grade A and Lower. SS due 08/2022. Dwt: 11,964lt. Lt Displ: 1,860lt. Rakes: Double. Bulkheads: 6 transv / 1 long'l. Capacity: 81,751bbl. Tanks: 10. Pumps: 2 - 4,500bph, Byron Jackson LS-12, 4 Stage. 1 - 5,000lb anchors. Windlass: 1 - Hatlapa 100 hydraulic. Crane: 2 - EBI C-10-B (4,000lb). Gensets: 2 - CAT3406 (cargo pump); 1 - 45kW John Deere. Double hull, all welded steel construction. All tanks are coated. National NC-600. 2" cargo stripping system. Bergen tank radar gauging system / high level and overflow alarm system. Raised trunk. TPI at Loadline = 57.58LT. **U.S. Northwest.**

## Offshore Support



**File: CB04414 / CB04415 Pilot Boat (Two Available):** 44.3' x 13.9' x 6.4'. Built in 1995 by Canyon Tech. Industries. Egypt flag. GRT: 29. NRT: 18. ABS +A1, Launch, AMS. Unrestricted. Laid up in active class. D/D & S/S overdue. FO: 0.8m3. FW: 1 tank. 1 - 25kg anchors. Wire/Chain: 50m x 10mm. Windlass: Electric. M/Es: 2 x CAT 3208 DITA total 630BHP at 2,600RPM. Last Overhauled: 2005. Twin disc gears. 2 - Bronze FP props. Repowered in 2000. Speed 25kn. Pumps: 24vDC: 1 - FO, 1 - FW, 2 - bilge. Firefighting: Automatic CO2 in engine room. Passengers: 6-10 seats. Fiberglass reinforced alloy hull. 8 stainless steel bits. Fitted with liferaft. **Mid East.**



**File: CB06533 Crew Boat:** 65.0' x 18.0' x 9.2'. Built in 1970 by Swiftships. U.S. flag. GRT: 71. NRT: 48. USCG COI (suspended). Dwt: 5T. 14' x 28' clear deck. FO: 1,300g. FW: 1,200g. M/Es: 2 x GM 12V71 total 960BHP. MG-5142:1 gears. 2 - 32" x 28" 4-blade props on 2 1/2 shafts. Speed 18kn on 50gph. Gensets: 1 - 20kW / Delco 7 AK 240/120v 1Ph. 4 berths, 1 State room. AirCon. Passengers: 16. All aluminum deep "V" hull; Hydraulic steering. Range: 24 hours 10cfm Air Compressor. Suspended COI which can be reinstated following bottom-side inspection. **U.S. Gulf Coast.**



**File: CB08080 Crew Boat:** 80.0' x 17.1' x 9.0'. Built in 1978 by Sewart Seacraft; LA. U.S. flag. GRT: 81. NRT: 55. USCG COI - 20nm offshore exp. 05/2025. 10T on 35' x 16' clear deck. FO: 1,500g. M/Es: 2 x GM 12V71TI total 1,050BHP at 1,800RPM. Twin Disc MG-514 gears. 10cfm compressor. Speed 20kn on 50gph. Gensets: 2 - 30kW / GM3-71. Steering: Hydraulic. AirCon. Passengers: 28. Aluminum deep "V" crewboat. **U.S. Gulf Coast.**

Details believed correct, not guaranteed. Offered subject to prior sale or charter.



## Offshore Support, Continued



**File: CB10121 Crew Boat:** 101.6' x 21.3' x 9.6'. Built in 1982 by Halter Marine Inc; LA, USA. Rebuilt: 2005. Indonesia flag. GRT: 106. NRT: 32. BKI +A100 (I) P AL Crewboat, +SM. Dwt: 253T. 30.50mt on 75m2 clear deck. Deck Load: 1mt/m2. 1 - Stockless anchor. Windlass. M/Es: 3 x GM 12V71 total 1,600BHP at 2,100RPM. Twin Disc 514C 2:1 gears. 3 - FP props. Speed 19kn. Gensets: 2 - 48kW / Perkins 240vAC. Quarters: 6 crew. Passengers: 60. Vessel refurbished in 2001. 2 - 4m long spray booms. Two toilets & two showers. **Southeast Asia.**



**File: CB11420 Crew Boat:** 114.5' x 21.2' x 9.2'. Built in 1986 by Villeneuve La Garenne; France. Indonesia flag. GRT: 179. NRT: 54. BV I, 3/3 E Special Service AUT. Coastal Waters. Dwt: 70mt. Light Disp.: 66mt. 10mt on 28.2' x 17.8' clear deck. M/Es: 2 x GM 16V149TI total 3,600BHP at 1,800RPM. ZF BW 455 gears. 2 - 63S 62 Kamewa Water Jet props. Range - 340nm. Max speed 31.5 kn. Speed 22-24kn. Gensets: 1 - 80kVA / GM 3-71, 1 - 125kVA / GM 6V71TA 380vAC 50Hz 3Ph. Fifi: 1 - 600m3/h monitor. Pump driven off spare generator. 6 - 1 berth cabins. AirCon. Passengers: 88 seats + 2 in VIP cabin. VIP Saloon. 27 knots fully loaded. Fully equipped. **Southeast Asia.**



**File: CB11527 Crew Boat:** 115.7' x 23.0' x 11.2'. Built in 2005 by Sam Aluminum Engineering; Singapore. Indonesia flag. GRT: 138. NRT: 88. ABS +A1, HSC Crewboat, Coastal, +AMS. Dwt: 91mt. 86m2 clear deck. FO: 107m3. FW: 16m3. 1 - 97kg stockless anchor. Wire/Chain: 200m x 16mm. Windlass: Hypac 16.3kN @ 13m/min. M/Es: 3 x CAT C32 total 4,200BHP at 2,300RPM. ZF 3050 2.5:1 gears. 3 - 1,000mm 5-blade FP props on 101.6mm shafts. P/C/S Tailshaft Surveys overdue 2020. Bowthruster 0.65mt. Speed 25-26.9kn. Gensets: 2 - 52kW/Perkins 4 Sabre TGM, 1 - 10kVA/Yanmar 380/415vAC 50Hz 3Ph. Fifi: 1,200m3/h pump & Ekhart monitor. Quarters: 10 persons. AirCon. Passengers: 60 seats. Aluminum hull crew / fast utility vessel. Lifesaving & fifi as per SOLAS. 1 hospital. **Southeast Asia.**



**File: CB11830 Crew Boat:** 118.1' x 25.0' x 12.0'. Built in 2008 by Penguin SY; Singapore. Panama flag. GRT: 239. NRT: 72. BV I Crew Boat / Cargo Utility. SS due 07/2023. Dwt: 114mt. M/Es: 3 x Cummins KTA38M2 total 4,050BHP at 1,900RPM. 3 - FP props. Speed 25kn max. Gensets: 2 - 80kW 415/220vAC 50Hz. Passengers: 92. **Mid East.**



**File: CB12019 Crew Boat:** 120.0' x 25.0' x 12.0'. Built in 2007 by Penguin SY; Singapore. Panama flag. GRT: 236. NRT: 71. BV. SS & DD due 11/2022. Dwt: 100T. 80m2 clear deck. Deck Load: 2T/m2. FO: 55,000L. FW: 27,000L. M/Es: 3 x Cummins KTA38M2 total 4,050BHP at 1,950RPM. 3 - FP props. Bowthruster 75kW. Speed 21-26kn. Gensets: 2 - 80kW 415v 50Hz 3Ph. Fifi: 1 - 600m3 monitor; 1 - 600m3 pump. AirCon. Passengers: 92. **Mid East.**



**File: CB13520 / CB13521 Crew Boat (Two Available):** 135.0' x 24.0' x 11.4'. Built 2007 by Grandweld SY; Dubai, UAE. Panama flag. GRT: 242. NRT: 72. DNV - SS due 02/2027. Dwt: 140T. M/Es: 3 x Cummins KTA38M2 total 4,050BHP at 1,950RPM. 3 - props. Bowthruster 90BHP. Speed 20-24kn. Gensets: 2 - 91kW. Pax: 5. **Mid East.**



**File: CB15235 Crew Boat:** 152.0' x 29.5' x 12.0'. Built in 1997 by Breaux Bay Craft. U.S. flag. GRT: 98. NRT: 68. USCG COI Subch T. Dwt: 290lt. 200LT on 87' x 25' clear deck. Deck Load: 400lb./ft2. FO: 15,515g. FW: 800g. DW: 31,139g. M/Es: 4 x Mitsubishi S12R-MPTA total 4,720BHP. ZF 4650 gears. 4 - FP props. Repowered from MTUs 2011. Speed 20-27kn on 275 - 350gph. Pumps: FO: 150gpm, FW: 150gpm. Gensets: 2 - 160kW / IVECO IKN-60 Tier III 240v 60Hz. 8 berths / 4 cabins. Passengers: 65. Laid-up. **U.S. Gulf Coast.**

Details believed correct, not guaranteed. Offered subject to prior sale or charter.



## Offshore Support, Continued



**File: CB16230 Crew Boat:** 162.0' x 29.6' x 10.8'. Built in 2004 by Breaux's Bay Craft, LA. U.S. flag. GRT: 98. NRT: 67. ABS Loadline (allowed to lapse). USCG COI. Laid-up. 250LT on 100' x 25' clear deck. Deck Load: 400lb/ft2. FO: 18,546g. FW: 900g. DW: 29,580g. M/Es: 4 x CAT 3512B total 6,300BHP at 1,800RPM. 2.5:1 gears. 4 - FP props. Bowthruuster 375HP. Speed 23-27kn on 275-350gph. Gensets: 2 - 160kW / Lima 240v, 60Hz. 8 crew / 4 cabins. AirCon. Passengers: 72. Main engines Tier 1. **U.S. Gulf Coast.**



**File: CB16501 Crew Boat:** 165.0' x 30.0' x 12.0'. Built in 1997 by Gulf Craft, Inc.; Patterson, LA. U.S. flag. GRT: 98. NRT: 67. USCG Sub T, SPV. Dwt: 300T. 280lt on 95.5' x 24.5' clear deck. FO: 25,000g. FW: 40,000g. M/Es: 4 x Cummins KTA38M total 5,400BHP at 1,950RPM. Twin Disc 518 2.5:1 gears. 4 - 40"x36" FP props. Speed 21kn on 220gph. Pumps: FO: 90gpm; FW: 600gpm. Gensets: 2 - 50kW / GM4-71 60Hz. Fifi: 1 - monitor on stern. Quarters: 6. AirCon. Passengers: 90 seats. Range 1,602nm. **U.S. Gulf Coast.**



**File: CB17024 Crew Boat:** 170.0' x 28.0' x 13.0'. Built in 2002 by Gulf Craft; Patterson, LA. U.S. flag. GRT: 95. NRT: 64. USCG COI. 250T on 102' x 22' clear deck. FO: 24,000g. FW: 31,500g. DW: 15,500. M/Es: 5 x Cummins KTA38 total 6,750BHP. 5 - Twin Disc 2.5:1 gears. Bowthruuster 200HP. Speed 25kn on 225gph. Gensets: 2 - 75kW / Cummins 6BT5.9. Fifi: Elkhorn 8393 monitor; 2 - 5 gal AFFF foam. Quarters: 2 - singles; 2 - doubles. Passengers: 78. Carries 12,254g cargo fuel. DP-1 equivalent. **U.S. Gulf Coast.**



**File: CB17045 Crew Boat:** 170.0' x 30.0' x 12.3'. Built in 2003 by Swift Ships. U.S. flag. GRT: 99. NRT: 72. Ex ABS Loadline, USCG Sub Ch. T Exp 02/2023. 178LT on 114' x 26' clear deck. Deck Load: 400lbs/ft2. FO: 12,650g. LO: 250g. FW: 1,230g. DW: 45,000g. BW: 45,000g. Crane: 2 - Denning. M/Es: 4 x Cummins KTA38M2 total 5,400BHP. 4 - ZF gears. 4 - Hamilton Jets props. Bowthruuster 375hp. Speed 23-27kn on 275-350gph. Gensets: 2 - Cummins 6BT 240V 60Hz. Fifi: 1,000gpm monitor. 10 berths in 3 cabins. Pax: 70. DP1 equivalent. Vessel is working. ITC - 347G / 104N. **U.S. Gulf Coast.**



**File: LC16038 Landing Craft:** 160.0' x 38.0' x 11.0'. Built in 1997 by PT Sentosa Mulia SY; Indonesia. Indonesia flag. GRT: 485. NRT: 146. RINA C+ Ro-Ro Cargo Ship, Unrestricted. S/S due 03/2022. Dwt: 600mt. 270m2 clear deck. FO: 68m3. FW: 85m3. 2 - 600kg anchors. Windlass: 2 - 5T. M/Es: 2 x CAT 3406TA total 760BHP at 1,800RPM. Reintjes WAF 264 4.5:1 gears. 2 - FP props. P/S Tailshaft Docking due 03/2022. Speed 9kn. Gensets: 2 - 53kW / Cummins, 1- 20kW / Perkins. 6 crew in 4 cabins. AirCon. All welded steel landing craft. Equipped for carriage of fuel oil. Ready for delivery. **Southeast Asia.**



**File: LC17346 Landing Craft:** 173.8' x 45.0' x 12.0'. Built in 2009 by PT Bumi Laut Perkasa; Indonesia. Indonesia flag. GRT: 676. NRT: 203. BKI +A100, (I) P / RINA C Ro-Ro cargo ship, MN. 350m2 clear deck. FO: 124m3. FW: 68m3. 2 - 480kg anchors. Windlass: 2 - 3T. M/Es: 2 x Cummins KTA-19-M3 total 1,200BHP at 1,800RPM. Reintjes WAF 264 4.5:1 gears. 2 - FP props. Speed 10kn. Gensets: 2 - 97.5kVA / Cummins 6BT 5.9-D(M), 1- 35kVA / Yanmar 415vAC. Quarters: 12 crew / 6 cabins. AirCon. All welded steel landing craft with tank capacity. Hydraulic 3T capacity bow ramp. 31m x 9.6m deck fitted with container footings for carriage of containers. Lifesaving / fifi equipment SOLAS compliance. Warm layup. **Southeast Asia.**





## Offshore Support, Continued



**File: PC11045 Passenger Cruise:** 110.0' x 45.0' x 12.5'. Built in 1986 by Precision Marine Holding; Australia. France flag. GRT: 511. NRT: 182. Dwt: 50mt. M/Es: 2 x GM 16V92TA total 1,926BHP. 2 - FP props. Speed 12kn. Gensets: 3 - 150kVA / Cummins 6CT. 14 crew in 9 cabins. AirCon. Passengers: 40. Aluminum overnight luxury catamaran. Converted from passenger ferry in 1997 & fully renovated in 2007. 12 passenger cabins aft (15m2 each). Large saloon on main deck with restaurant for 40 guests & sky lounge. Large Massage cabin. Spa / sundeck with Jacuzzi on foredeck suited for island cruising. Outside bar on upper deck. Aft hoistable swim platform. Separate crew mess. **South Pacific. Prompt.**



**File: PD11524 Passenger Day:** 115.0' x 24.8' x 9.7'. Built in 1980 by Nichols Bros; Freeland, WA. U.S. flag. GRT: 93. NRT: 63. USCG COI - Exp. 03/2022. FO: 4,000g. LO: 100g. FW: 600g. 2 - 150lb Danforth anchors. M/Es: 4 x GM 12V71 total 1,444BHP at 1,800RPM. MG514C 2.5:1 gears. 4 - 36" x 36" FP props on 3" shafts. Speed 14kn max. Gensets: 2-75kW/GM4-71, 1-40kW/PTO. Autopilot. Radars: 2. Fathometer. SSB. VHF. AirCon. Passengers: 150. Three deck, steel hull & main house, aluminum upper superstructure construction. Full electronics & full Closed circuit TV. **U.S. West Coast.**



**File: PD13632 Passenger Day:** 136.0' x 32.0' x 10.0'. Built in 1999 by Chesapeake Shipbldg; MD. U.S. flag. GRT: 87. NRT: 59. USCG COI - Lakes Bays & Sounds; Exp. 03/2026. FO: 7,500g. FW: 3,500g. M/Es: 2 x CAT 3408 total 880BHP. 2 - FP props. Gensets: 2 - 175kW / CAT. Autopilot. Radar. GPS. Fathometer. VHF. AirCon. Passengers: 300. All welded steel construction. Three (3) interior decks and one sky deck. ADA Accessible, with internal lift for ADA access to all three decks. ITC - 652G / 229N. **U.S. West Coast.**



**File: RV18641 Research Vessel:** 186.0' x 40.0' x 16.0'. Built in 1990 by McDermott Shipyard; LA. U.S. flag. GRT: 495. NRT: 337. Ex-ABS + A1 (E) + AMS, ABS Loadline. Laid up with several O/S recommendations. USCG COI Subch "U". 140LT on 46'x40'/32'x20' clear deck. FO: 68,000g. LO: 1,155g. FW: 15,000g. BW: 102,000g. 2 - 1,250lb stockless anchors. Windlass: Fritz Culver (FCWH-6). Crane: 11T. Winch: 4 - Fritz Culver vertical traction (10T ea) 4pt mooring. Line Pull: 20,000each. M/E: 1 x Cummins KTA50 total 1,250BHP. Reintjes WAV 870 7.05:1 gears. 1 - 90" x 74" FP props on 7" shafts. 2 - 300HP Ulstein Z-drives, 1 - 400HP Omni thruster forward. Bowthruster 400HP. Speed 11kn. Gensets: 3 - 650kW / Cummins 1728; 1 - 100kW / Cummins NT855 450vAC 60Hz. Quarters: 41 (can be increased). AirCon. Large Galley, laundry. Originally built for U.S. Navy as a torpedo test craft. Can anchor in water up to 2,400'; maintain position and work up to Sea State 5. Large scientist space, excellent research platform, cable splicing etc. or OSV. 2 - Stockless 1,250lb anchors fitted plus 2 - 750lb anchors aft in storage and not currently fitted. Sold to current owner by Marcon. **U.S. Northwest.**



**File: RV19241 Dive Support:** 192.0' x 40.0' x 14.0'. Built in 1981 by Rysco; Rockport, TX. Rebuilt: 2008. U.S. flag. GRT: 295. NRT: 200. ABS Loadline, USCG. 70' x 31' clear deck. FO: 45,442g. FW: 39,168g. 4 - 8,000lb. anchors. Wire/Chain: 5,500' x 1.125". Crane: 25T Hydraulic telescoping. 15T A-frame. Winch: 2 - Clyde double drum mooring. Line Pull: 55,000lb. Wire: 5,500' 1.125. M/Es: 2 x CAT D399 total 2,250BHP at 1,225RPM. CAT7261 4.22:1 gears. 2 - FP props on Stainless steel shafts. M/E Rebuilt 2009. Bowthruster 300HP. Speed 10-12kn on 75gph. Gensets: 2 - 210kW / CAT. AirCon. Dive support vessel. 4-point mooring system (optional). Leased winches currently removed, but can install new RB 90s or similar as system still intact. 32" moon pool for survey & scientific ops. Located on main deck just aft of dive control van and accommodation. Quarters include 10 berths for vessel crew, plus 35 total for client. Client berthing includes 1 - private room with office and shower, 2 - 1 man, 5 - 4 man and 2 - 6 man rooms. Built in dive equipment accommodates full service air & mixed gas diving operations to 300ft. Custom dive control center. Full electronics. Vessel converted to DSV from supply boat in 2007/2008. As of February 2019, out of drydock with current COI. Available for sale or charter for surface supplied dive ops. **U.S. Gulf Coast.**

Details believed correct, not guaranteed. Offered subject to prior sale or charter.



## Offshore Support, Continued



**File: SU14748 Supply Boat - AHTS:** 147.6' x 41.3' x 17.4'. Built in 2011 by Jiangsu Sunhoo Shipbldg; China. Vanuatu flag. GRT: 883. NRT: 265. BV I + Hull+ Mach Exp 04/2022. Ex - ABS. Dwt: 611mt. 200m<sup>2</sup> clear deck. Deck Load: 5T/m<sup>2</sup>. FO: 460m<sup>3</sup>. LO: 15.7m<sup>3</sup>. FW: 260m<sup>3</sup>. BW: 96.5m<sup>3</sup>. Wire/Chain Dia.: 32mm. Windlass: 6T @ 12m Zicom elect. / hyd. Crane: Rescue boat davit. Winch: Hyd. dbl drum w/ f; 2 - 10T tuggers; 2 - 5T capstans. Line Pull: 180T. Wire: 3,280' x 2'. Stern Roller. M/Es: 2 x CAT 3516B-HD total 5,150BHP at 1,600RPM. Nico Twin Disc MGN 1727V 7.5:1 gears. 2 - 2,700mm dia FP props. Kort nozzles. 1m<sup>3</sup>/h 15ppm oily water separator. Bowthruster 5T. BP: 65T. Speed 12kn max on 9.57-17.32Tpd. Pumps: FO: 50m<sup>3</sup>/h, FW: 50m<sup>3</sup>/h, FiFi: 1,500m<sup>3</sup>/h, GS/Fire: 50m<sup>3</sup>/h, Emergency: 25m<sup>3</sup>/h. Gensets: 3-245kW / Cummins; 1-80kW / Cummins 415v 3ph 50Hz. Fifi: 2 - 1,200m<sup>3</sup>/h monitors. Quarters: 24 men (2-1,3-2,4-4). AirCon. AHTS fitted with Zicom 200T SWL shark jaw and vertical hydraulic tow pin. Sewage treatment for 30 persons. **U.S. Gulf Coast.**



**File: SU15060 Supply Boat:** 150.0' x 36.0' x 12.0'. Built in 2005 by Master Boat Builders Inc.; USA. Foreign flag. GRT: 447. Overseas Marine Cert. Exp 01/2025. Last DD 2020. Ex ABS Int. Load Line. Dwt: 518T. 300T on 27 x 9m clear deck. Deck Load: 495lb/ft<sup>2</sup>. FO: 60,600g. FW: 8,400g. BW: 48,000g. Crane: Palfinger 4.5T (optional). M/Es: 2 x CAT 3508 total 1,800BHP. MG6690 gears. Bowthruster Schottel. Speed 11kn on 23-48gph. Pumps: DW: 625gpm@150'; FW: 360gpm@100'; FO: 360gpm@100'. Gensets: 2 - CAT C9DI. Fifi: 1 - FiFi Monitor 1,300gpm @ 240'. 20 berths. A-frame 15T (optional). Satcom (optional). **Caribbean.**



**File: SU18134 Supply Boat:** 180.0' x 40.0' x 11.5'. Built in 1982 by Halter Marine; MS. Foreign flag. GRT: 693. NRT: 207. ABS + A1 (E) + AMS, ISB. S/S due 08/2023. Dwt: 949lt. 650LT on 119' x 32' clear deck. Deck Load: 540lb/ft<sup>2</sup>. FO: 79,400g. LO: 2,100g. FW: 11,500g. DW: 141,000g. 2 - 2,000lb Danforth anchors. Wire/Chain: 1,980' x 1.25". Windlass: HBL ODW 1.25E-12. Crane: 1.5T. M/Es: 2 x CAT D399TA total 2,250BHP. CAT7271 gears. 86" x 71" 4 blade cast steel FP props on Stainless shafts. Range @ 13,200nm @ 10kn. Stacks Forward. Bowthruster 325HP. Speed 8-12kn on 39-93gph. Pumps: DW: 460gpm; FO: 285gpm; Bulk: 17gpm; Liq Mud: 600gpm. Gensets: 2 - 135kW / CAT3306 PCT 440vAC 60Hz. Firefighting. Quarters: 4 - 2, 1 - 6 person. Newly fitted with 50t stern ramp (22ft x 18ft). Good for Ro/Ro or palletized cargo. Vessel can trade into the US. **Caribbean.**



**File: SU20054 Supply Boat:** 190.0' x 54.0' x 18.0'. Built in 1999 by Atlantic Marine; FL USA. Vanuatu flag. GRT: 1,226. NRT: 367. ABS + A1 + AMS. SOLAS, DPS-1, L/L. Laid-up. Dwt: 1,780lt. 1,385LT on 140' x 46' clear deck. Deck Load: 5mt/m<sup>2</sup>. FO: 121,840g. FW: 54,550g. DW: 245,000g. Dry Bulk: 7,000ft<sup>3</sup>. Liq. Mud: 2,714BBL. M/Es: 2 x CAT 3516B total 4,000BHP at 1,600RPM. Reintjes 5.8421:1 gears. 96" 5-blade props. High efficiency/high translation rudders. Mathers controls. Bowthruster 600HP. Speed 10-13kn on 6.4mt/day. Gensets: 3 - 250kW / CAT 480vAC 60HZ, 3Ph. Fifi: 1 - 1,200m<sup>3</sup>/h FiFi monitor. 13 crew in 6 cabins. AirCon. Passengers: 16 pass seats. Nautronix DP systems. Independent steering, Schiling fishtail rudder. Moonpool. **U.S. Gulf Coast.**



**File: SU20086 Supply Boat:** 190.0' x 54.0' x 16.1'. Built in 1999 by Leevac Shipyard; USA. Mexico flag. GRT: 1,318. NRT: 395. ABS + A1 + AMS, DPS-1. SS due 05/2024. Dwt: 1,704mt. 1,016mt on 104' x 46' clear deck. Deck Load: 5mt/m<sup>2</sup>. FO: 747m<sup>3</sup>. FW: 486m<sup>3</sup>. DW: 208,170g. Dry Bulk: 7,000ft<sup>3</sup>. Liq. Mud: 3,590BBL. Crane: 2 - 20T Hyrda Pro Telescoping Boom. M/Es: 2 x CAT 3516B total 4,000BHP at 1,600RPM. Reintjes gears. 2 - 96" 5-blade FP props. 250HP stern thruster. Bowthruster 600HP. DP. BP: 36.7ST. Speed 10-13kn on 6.4mt/day. Gensets: 3 - 250kW / CAT 3406 480vAC 60Hz 3ph. Fifi: 1 - 1,250gpm monitor. Quarters: 16 crew. AirCon. **U.S. Gulf Coast.**



**File: SU20740 Supply Boat - AHTS:** 207.0' x 40.0' x 17.0'. Built in 1978 by Campbell Ind.; San Diego, CA. U.S. flag. GRT: 299. NRT: 203. ABS +A1, Towing Service, +AMS. Ice Class IC. Exp. 07/2024. USCG COI Sub M exp. 04/2024. Dwt: 920mt. 400LT on 118' x 32' clear deck. FO: 127,000g. FW: 53,800g. DW: 150,000g. Dry Bulk: 6,000ft<sup>3</sup>. 2 - 3,000 lb. anchors. Windlass: Double drum. Crane: 1 - 9,900 lbs. at 21 ft. Winch: Smatco 72DAW 250. Line Pull: 175T Brake. Wire: 2 - 3,000' x 2 1/8". Stern Roller. M/Es: 2 x EMD 16-645E7A total 5,750BHP at 900RPM. 2 - CP props 132" dia. props. Kort nozzles. Bowthruster 400HP. BP: 82MT. Speed 12-15kn on 2,000 -2,500@70%. 24 berths in 11 cabins. Triplex shark jaws system, 1-5T tigger, 2-Smatco vertical Capstans. **U.S. Northwest.**



## Offshore Support, Continued



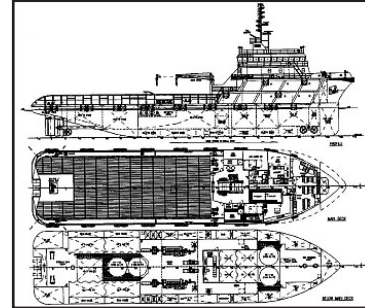
**File: SU21756 Supply Boat - Azimuthing:** 217.0' x 54.0' x 20.0'. Built in 2002 by Bender Shipbldg; AL. Panama flag. GRT: 1,888. NRT: 566. IBS. In lay-up status, expires 2024. Ex-ABS + A1, E + AMS + DPS-2, Unrestricted Service. Expired 2018. Dwt: 2,800mt. Light Disp.: 1,358T. 1,200lt on 148' x 45' clear deck. Deck Load: 4.8T/m2. FO: 760m3. FW: 160m3. DW: 1,080m3. BW: 330m3. Dry Bulk: 180m3. Liq. Mud: 460m3. 2-3, 473lb Danforth anchors. Windlass. M/Es: 2 x CAT 3516 BHD total 4,750BHP at 1,600RPM. 2 - Azimuthing 90" FP props. Bowthruster 2-21.7mt. Speed 8-12.5kn on 12m3 eco/day. Gensets: 3 - 260kW / CAT 3406C DITA; 1 - 90kW / CAT 3304 480vAC 60Hz. Quarters: Total 36 persons. DP-2 Class. Laid-up with engines ran periodically. **U.S. Gulf Coast.**



**File: SU22353 Supply Boat - AHTS:** 223.0' x 53.8' x 23.6'. Built in 2006 by Universal Shipbldg; Japan. Rebuilt: 2022. Japan flag. GRT: 2,057. NRT: 796. NK Class NS Tug, WB, MNS MPP, LSA, CAA, RCF, AFS. Exp. 02/2028. Dwt: 2,460T. 1,000mt on 450m2 clear deck. Deck Load: 5-10mt/m2. FO: 955m3. FW: 530m3. DW: 725m3. Liq. Mud: 421m3. Crane: 1 - 5mt @ 10m. Winch: Brattvaag dbl drum. Line Pull: 300T. Wire: 2500m x 76mm. M/Es: 2 x Wartsila 9L32 total 12,240BHP. 2 - Wartsila CP props. 2 bow, 1 stern thruster 800kW each. Bowthruster. Dynamic Positioning. BP: 150mt. Speed 14.3kn. FiFi 1. Quarters: 30 (6-1, 8-2, 2-4). Upgrades and refurbished with fresh NKK class issued in 2022. Formerly ABS +A1 Class. **Far East.**



**File: SU22500 Supply Boat - AHTS:** 225.0' x 52.0' x 22.0'. Built in 1997 by Halter Marine. U.S. flag. GRT: 2,136. NRT: 640. ABS + A1, Towing Service + AMS SS overdue 2017, USCG COI "L" OSV overdue 2017. SOLAS. Dwt: 2,180lt. 1,222MT on 484m2 clear deck. Deck Load: 5MT/m2. FO: 707m3. FW: 673m3. DW: 757m3. Dry Bulk: 7920ft3. Liq. Mud: 3,000BBL. Windlass: Dbl Wildcat. Crane: 1 - 5MT @ 9m. Winch: Smatco double drum; 2 - tuggers. Line Pull: 485T. Stern Roller. M/Es: 4 x EMD 16-645E7B total 12,280BHP. 2 - Reintjes 5.488:1 gears. 2 - CP props. Stern thruster: 1- 600BHP (thrusters all electric drive). Bowthruster 600BHP. BP: 158LT. Speed 12-14kn on 18-40m3/d. Gensets: 2 - 1,600kW; 1 - 350kW; 1 - 120kW. Fifi: 1 - monitor; 137m @ 2,600gpm discharge. 24 in 16 cabins. AirCon. DP 2 AHTS designed for deep water operations. Triplex shark jaws, chain lockers & wire storage reels. Tow pins. Vessel to be reflagged out of U.S. registry. **U.S. Gulf Coast.**



**File: SU22948 Supply Boat - AHTS:** 230.0' x 52.5' x 23.6'. Built in 2007 by PT Jaya Asiatic SY; Indonesia. Vanuatu flag. GRT: 2,342. NRT: 702. ABS +A1, Tow, DPS-2, E, +AMS, Unrestricted. SOLAS. S/S overdue 2019. D/D overdue 2017. Dwt: 2,579mt. 600mt on 37.19m x 12.80m clear deck. Deck Load: 7.5mt/m2. FO: 890.78m3. LO: 38m3. FW: 611.48m3. DW: 387.45m3. Dry Bulk: 200m3 in 4 tanks. Liq. Mud: 643.12m3. Stern Roller. M/Es: 2 x Wartsila 6L32A total 8,046BHP at 750RPM. Wartsila gears. 2 - Nibrall CP props. Kort nozzles. Stern thruster: 700HP. P/S Tailshaft Surveys overdue 2019. Bowthruster 2 - 700HP. BP: 99.297mt. Speed 13.5kn. Gensets: 2 - 370kW/aux., 2 - 1,800kW/shaft 440vAC. FiFi-1. Quarters: 42 persons. AirCon. DP 2, KCM-70M design, anchor handling supply vessel. Bollard pull class certified. Speed abt. 10kn on 9.8mt/day. 6 inflatable life rafts & 1 rescue boat. Laid up in active class. Sellers willing to discuss modifications at own shipyard for qualified interests. **U.S. Gulf Coast.**



**File: SU23560 Supply Boat:** 235.9' x 52.4' x 22.9'. Built in 2008 by Cochin SY; India. Niue flag. GRT: 2,160. NRT: 1,036. RINA. DNV-GL +1A1, SF EO, Dynpos-AUT, Clean SS & DD overdue 2018. Laid-up. Dwt: 3,250T. 1,600mt on 680m2 clear deck. Deck Load: 5mt/m2. FO: 973m3. FW: 900m3. DW: 1,265m3. Dry Bulk: 320m3. Liq. Mud: 997m3. Windlass: 2 - 8T Brattvaag capstans. Crane: 3T @ 10m outreach. Winch: 2 - 10T Tuggers / Brattvaag. M/Es: 2 x Bergen KRMB-9 total 5,450BHP at 825RPM. 2 - CP props. Stern Thruster: 800BHP. Bowthruster 2-800BHP. Speed 14.3kn on 22.7m3/day. Pumps: FO/FW/DW: 200m3/h@9bar each; LiqMud: 2-75m3/h@22bar; Base: 150m3/h@9bar. Gensets: 2 - 1,280kW / shaft; 2 - 250kW; 1 - 72kW / 440v 60Hz. FiFi - 1. Quarters: 42-person. UT-755L design. Kongsberg K Pos-21. DP-2. Laid-up. Brattvaag PH SNF 210-40 anchor windlass. Worked in transportation of liquid products and deck cargo to drilling rigs, production platforms, pipe laying barges and drill ships. Performs Safety Standby Service functions. Lifesaving and fifi equipment meet SOLAS requirements. **Southeast Asia.**

Details believed correct, not guaranteed. Offered subject to prior sale or charter.



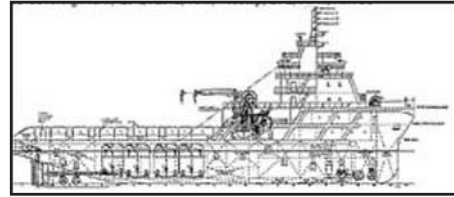
## Offshore Support, Continued



**File: SU23667 Supply Boat - Azimuthing:** 236.2' x 52.5' x 23.0'. Built in 2003 by Brattvaag Skipsverft, Norway. U.K. flag. GRT: 2,244. DNV +1A1, Supply Vessel, SF E0, Dynpos AUTR - New 5 year Certs Feb 2023. Dwt: 3,200T. 1,500T on 640m<sup>2</sup> clear deck. FO: 916.8m<sup>3</sup>. FW: 796.3m<sup>3</sup>. DW: 1152.4m<sup>3</sup>. Dry Bulk: 9,000ft<sup>3</sup>. Liq. Mud: 4,839BBL. Calcium Chloride / Brine: 4,839BBLs. Crane: 1 - 5T @ 10m. Winch: 2 - 10T tugger. M/Es: 2 x CAT KRMB-9 total 5,450BHP. 2 - azi CP props. 2-800HP stern thrusters; 1- 1,000HP Azi thruster and 1-800HP tunnel fwd. Bowthruster 1,000BHP. Pumps: FO/FW: 200m<sup>3</sup>/h, DW: 150m<sup>3</sup>/h, LiqMud/Brine: 75m<sup>3</sup>/h. Gensets: 2 - 1,352kW AC. Quarters: 38 (14-1, 12-2). Kongsberg Simrad SDP DP-2. UT755L design. Supply / ROV support. 6m x 3.5m survey room (main deck), 5.5m x 4m survey office (A deck), 19" racks and 220v power. Telemetry / video / data link to bridge and Client cabins. Aft deck strengthened for 400T/m Crane, flush with deck, with power supply (optional). Moon Pool (4.35 x 3.8 m). Can be outfitted with 150T A-frame aft. **North Sea.**



**File: SU24052 Supply Boat - AHTS:** 240.0' x 52.1' x 18.5'. Built in 1986 by North American SB; LA. U.S. flag. GRT: 499. NRT: 339. ABS + A1 AMS Towing. USCG Certified overdue 2016. Dwt: 1,527lt. 830LT on 135' x 44' clear deck. Deck Load: 5,000lb/ft<sup>2</sup>. FO: 178,576g. LO: 3,500g. FW: 23,068g. DW: 325,615g. Dry Bulk: 5,120ft<sup>3</sup> in 4 tanks. Liq. Mud: 2,230BBL. 2 - 3,000lb anchors. Wire/Chain: 20 shot x 1.5". Windlass: HBL dbl gypsy. Crane: 2 - 10T @ 30'. Winch: Brattvaag dbl drum w/f. Line Pull: 500T. Wire: 2 - 6,500' x 3.75". Stern Roller. M/Es: 3 x EMD 20-645E7 total 12,000BHP at 900RPM. 3 - 108" Ulstein CP props. 1,200HP stern thruster. Ulstein 360deg. azi thrusters. Bowthruster 1,200HP. BP: 150LT. Speed 12-14kn on 138-268gph. Pumps: Liq. Mud: 550ft<sup>3</sup>/h, Cement: 700ft<sup>3</sup>/h, DW: 1,720bbbl/h. Gensets: 3 - 1,800kW / shaft; 2 - 300kW / aux. Fifi: 2 - 12,500gpm fire monitors. Quarters: 34 total. AirCon. DP-2 AHTS. Two 6,000' Rig chain lockers (3.5" chain). One 350MT shark jaws. 350MT tow pins. 8' x 6' stern roller. 2 - 12T & 2 - 10T Tuggers. Two 6,500' 3.75" storage reels. Must reflag out of U.S. registry. **U.S. Gulf Coast.**



**File: SU24961 Supply Boat - AHTS:** 249.4' x 60.7' x 26.2'. Built in 2012 by PT Loh & Loh Construction Ida; Indonesia. Singapore flag. GRT: 3,743. NRT: 1,041. BV, DP2, FiFi-1. SS due 12/2022. Dwt: 2,850mt. 600m<sup>2</sup> clear deck. Deck Load: 5.5mt/m<sup>2</sup>. FO: 1,160m<sup>3</sup>. FW: 715m<sup>3</sup>. DW/BW ea: 1,865m<sup>3</sup>. Dry Bulk: 250m<sup>3</sup>. Liq. Mud: 754m<sup>3</sup>. Calcium Chloride /Brine: 754m<sup>3</sup>. 2 - 3,060kg anchors. Crane: 5T @ 15m. Winch: dbl drum w/f 400T brake. Line Pull: 250T. Wire: 1,000m x 72mm. Stern Roller. M/Es: 2 x GE 16V228 total 8,200BHP. 2 - props. 2 - 8T Stern thruster. Bowthruster 10T & 11.5T. BP: 110T. Speed 12-13kn. Gensets: 2 - 830kW; 240kW; 2-1,500kW / Shaft 415v 50Hz 3ph. 60 in 30 cabins. DP2. Shark jaws/Tow pins. **Africa West.**



**File: SU25661 Supply Boat - AHTS:** 256.9' x 56.4' x 27.2'. Built in 2007 by Kleven Verft AS; Norway. Norway flag. GRT: 3,107. NRT: 1,051. DNV +1A1, ICE-C, Tug/Supply Vsl, OILREC,E0, DYNPOS-AUTR, SF, Comf-(3). Dwt: 3,060mt. Light Disp.: 3,182mt. 510m<sup>2</sup> clear deck. Deck Load: 10T/m<sup>2</sup>. FO: 1,011m<sup>3</sup>. FW: 861.9m<sup>3</sup>. DW: 1,230m<sup>3</sup>. BW: 1,230m<sup>3</sup>. Dry Bulk: 230m<sup>3</sup>. Liq. Mud: 549m<sup>3</sup>. Calcium Chloride / Brine: 400m<sup>3</sup>. Crane: 2 - 3mt SWL. Winch: Dbl drum 500T brake; 2 - 12T tuggers. Line Pull: 400T. Stern Roller. M/Es: 2 x Bergen B32:40V12P total 16,092BHP at 750RPM. 2 - CP props. 883kW CP (f) thruster; 2 - CP (a) thruster. Bowthruster 883kW. BP: 190mt. Speed 15-17kn. Gensets: 2 - 3,000kVA shaft; 1 - 1,668kVA aux; 1 - 488kVA emer. Quarters: 28 (12-1,2-4,4-2). UT 712L design. 16 marine crew. 114.8'(35.0m) air draft. 4 - 98m<sup>3</sup> rig chain lockers. Two roll reduction tanks. RR ICON DP 2 system. In lay-up. **Europe Northern.**



**File: SU25664 / SU25666 Supply Boat - AHTS (Two Available):** 256.8' x 56.4' x 27.2'. Built in 2007 by SC Aker Braila SA; Norway. Isle of Man flag. GRT: 3,068. NRT: 1,057. DNV +1A1, SF E0, DK(+) HL(2.5), Supply Vsl, Tug, Clean, DYNPOS-AUTR, TMON. Dwt: 2,350mt. 900mt on 540m<sup>2</sup> clear deck. Deck Load: 10mt/m<sup>2</sup>. FO: 1,060m<sup>3</sup>. FW: 741m<sup>3</sup>. DW: 1,231m<sup>3</sup>. Dry Bulk: 225m<sup>3</sup> in 4 tanks. Liq. Mud: 538m<sup>3</sup>. Calcium Chloride/Brine: 414m<sup>3</sup>. Crane: 2 - SWL 3mt @ 15m. Winch: 2 - 12mt tugger. Wire: 4,930m x 76mm. M/Es: 4 x Bergen C25:33L9P total 16,157BHP at 900RPM. 2 - CP props. 1,200BHP stern thruster. 1,200BHP azimuth thruster. Bowthruster 1,200BHP. Speed 12-16kn on 21-44mt/day. Gensets: 2 - 3,000kVA 440V shaft; 1 - 968kW aux; 1 - 410kW emer. FiFi-2. 2 - 3,600m<sup>3</sup>/h. 28 in 18 cabins. UT 712L design. Tow pins: 4 - 250mt MWL Karm. Shark jaws: 2 - 750mt MWL Karm. Stern roller: 2 - 3m x 3.5m MWL 500mt. Chain lockers: 4 - 98m<sup>3</sup>. Kongsberg DP 2 system. Laid-up. **SE Asia.**



## Offshore Support, Concluded



**File: SU26867 Supply Boat - Azimuthing:** 267.7' x 60.4' x 27.6'. Built in 2013 by Nam Cheong Dockyard; Malaysia. Malaysia flag. GRT: 3,963. NRT: 1,188. ABS (IACS) (+)A1, FiFi1, OSV, Oil Rec. Vsl Class 1, (+)AMS, (+)DP2, CRC, Unrestricted Service. SS due 07/2023. Dwt: 4,250mt. 820ft2 clear deck. FO: 376.8m3. BW: 1,520m3. Crane: 1 - 20mt SWL / cargo. M/Es: 4 x Wartsila 9L20 total 8,920BHP at 1,000RPM. 2 - Azi thrusters props. 2 - tunnel thrusters. Bowthruster. Speed 12kn on 12T/day. 42 berths. Bulbous bow. 81.6m DP2 PSV. Diesel Electric. Fitted to store and support oilfield operations with methanol. Reportedly in top condition. Owner taking offers for handover after end of current charter in May. **Southeast Asia. June 2023.**



**File: SU27666 Supply Boat - AHTS:** 276.0' x 60.0' x 27.6'. Built in 1999 by North American Shipbldg.; LA. U.S. flag. GRT: 3,969. NRT: 1,190. ABS +A1, +AMS, (E), DPS-2. S/S overdue 2019. Dwt: 4,612lt. Light Disp.: 3,728mt. 1,350LT on 141.0' x 50.0' clear deck. FO: 406,182g. FW: 30,666g. BW: 356,210g. Dry Bulk: 9.850ft3. Liq. Mud: 5,426bbbl. Crane: 2 - 5T @ 30' radius fixed. Winch: Brattvaag 4-drum waterfall. 2 - 15mt tuggers. Wire: 4 x 1,800m 96mm. Stern Roller. M/Es: 2 x CAT 3616TA total 16,400BHP at 1,000RPM. 2 - 4,000mm CP props. Kort nozzles. 200HP drop down azimuth fore & 1 - 1,500HP tunnel aft thrusters. Bowthruster 1,500HP. BP: 170mt. Speed 15kn free. Gensets: 3 - 500kW / aux. 1 - 300kW / emerg. Quarters: 41 persons. AirCon. DP-2 AHTS. 2 - 300mt tow pins. 2 - 700mt shark jaws. Two chain lockers for 3.0" or 3.25" chain. 2 - 1,600m 8" dia. synthetic rope storage reels. Equipped to handle 350T A-frame. Two passive anti-roll tanks & bilge keels. Marine Technologies DP-2 system. Six 20 person inflatable life rafts. Rescue boat & basket. **U.S. Gulf Coast.**



**File: UB08226 Multicat - Twin Screw:** 82.8' x 26.9' x 8.5'. Built in 1999 by PT Mariana Bahagia; Indonesia. Indonesia flag. GRT: 119. NRT: 71. BKI +A100 (I) P Work Boat, SM. FO: 80mt. FW: 50MT. 180kg anchor. Wire/Chain: 247.5m x 19mm. Windlass. Crane: 2.8T @ 11m. M/Es: 2 x Yanmar 6HA2M-HTE total 700BHP at 1,950RPM. ZF -IRM 350P 3.968:1 gears. 2 - FP props. Speed 8kn free. Gensets: 1 - 59kW / Perkins, 1 - 24kW / MWM 350/220vAC. Fifi. Multicat style utility workboat. Superstructure aft and working area with knuckle boom crane fwd. 5 W/T bulkheads. National RT: 155G / 93N. **SE Asia.**

## Offshore Support Market, Cont'd.

of some 30gW of offshore wind energy capacity by 2030. The date of the lease sale has not yet been set, but is reported to include a 102,480-acre area offshore Lake Charles, Louisiana, and two areas offshore Galveston, Texas, one comprising 102,480 acres and the other comprising 96,786 acres.

Of the 13,439 vessels and 3,731 barges Marcon tracked as of late February 2023, 2,945 are supply and tug supply boats, with 247 officially on the market for sale. 63.45% of foreign and 80.39% of U.S. flag supply / tug supply boats Marcon has officially listed for sale are direct from Owners. In addition to those for sale, Marcon has 59 straight supply and tug supply vessels listed for charter worldwide.

Tug supply boats officially on the market for sale listed with Marcon in total is 79, 77 fewer than March 2022 and 78 fewer than February 2018. Composition in the last year has changed with dropping 83 AHTSs in the 3,000BHP to 9,000BHP and 10,000BHP to 12,000BHP ranges, while gaining nine in the over 12,000BHP category. February 2018, the average age of all AHTSs for sale was 15 years old, where U.S.-flag vessels averaged 26 years and foreign-flag AHTSs averaged 15 years. Today, the average age is 16 years old, with U.S.-flag AHTSs averaging 25 years and foreign-flag averaging 15 years old. At the time of this report, 19 tug supply boats officially for sale were either built within the last 10 years or are newbuilding re-sales. Only 16.67%, or 23, of tug supply boats are 25 years of age, compared to five years ago, when 19.23% of AHTSs for sale were at least 25 years old; and one year ago, 13.33% were at least 25 years old. At February 2023, the oldest AHTS available from Marcon was built in 1973.

At 168 platform supply vessels listed for sale late February 2023, we have 31 fewer PSVs listed for sale compared to one year ago, but three more listed than five years ago. Looking at change in vessel size composition, the biggest decreases were in the 150' to 160' LOA and over 240' LOA ranges, though there was a fairly consistent decline in all other sizes tracked. PSVs now being offered are about the same age as those offered back in February 2018 with the average age of all available for sale at 20 years old. U.S.-flagged PSVs decreased from 23 years to 21 years, while foreign flagged decreased from 20 to 17 years old. As of this report, Marcon officially has available 30 supply boats built within the last ten years, with zero newbuildings listed. 39 PSVs, or 23.21%, are 25 years of age or older, with the oldest PSV listed built in 1971 - compared to one year ago when 43 PSVs (21.61%) were older than 25 years. Five years ago, 41 PSVs (28.47%) were older than 25 years, but 9 or 6.25% were newbuilds.

1,154 of the vessels tracked by Marcon as of mid-February 2023 are crew, fast supply & pilot boats with 190 officially on the market for sale, plus 52 boats are available for charter worldwide. 37.9% of the boats officially for sale are U.S. flag. 43 crew boats for sale worldwide were built within the last 10 years. 62 boats, or 32.63%, are 25 years of age or older. The oldest boat listed is a 40', 240BHP 1957 built and located U.S. West Coast. This vessel is counterbalanced by a 170.6' LOA foreign 2022 built crew boat in Southeast Asia. Crew boats officially on the market now are down 35 from one year ago but up 23 from five years ago. In terms of vessel size by LOA available, we saw a fairly even decline throughout all size crew boats. As of this report, 22.63% of the crew boats available

Details believed correct, not guaranteed. Offered subject to prior sale or charter.



## Marcon's Recent Sales

Marcon International is pleased to announce six sales closed to date in 2023, which brings us to 1,552 sales and charters successfully completed since 1981.

In February and March to date, Marcon closed three additional private and confidential sales.



Marcon closed the private sale of a 1968 built, 111' x 33', 3,000BHP inland river towboat between U.S. clients. The welded steel towboat features a two-level deck house with a 39' height of eye raised pilot house atop a steel tower.

Marcon closed on the sale of the 145' LOA x 30' beam x 10.5' depth supply vessel "Titan". She was sold on a private and confidential basis between Caribbean clients. The vessel was originally built in 1981 by Moss Point Marine in Mississippi, lengthened 30' in 1994, repowered in the 2000s with Cummins KTA-19 M3 main engines and subsequently refurbished/rebuilt in 2021. Marcon acted as sole broker in the transaction.



Marcon's first sale of 2023 was a 2010s built, 197' 2,500lt dwt coastal deck barge. The barge was sold on a private and confidential basis between foreign parties.

In 2022, Marcon concluded a total of 19 sales and charters comprised of three ocean deck barges, three inland deck barges, an ocean tank barge, a landing craft, five tugs totaling 11,085BHP, a fast supply utility vessel, a crew boat, two platform supply vessels and two anchor-handling tug supply vessels.

## About Marcon

We specialize in the towing, marine construction and offshore petroleum industries. Although our primary focus as shipbrokers is in the sale, purchase and charter markets, we have also assisted many companies with valuations of individual vessels and fleets, as well as evaluating capital acquisitions, market rates and feasibility of trade routes.

## List Your Vessel / Barge With Marcon

We are interested in receiving information on any vessels or barges, inland or ocean service, available for sale or charter. Please [email](mailto:info@marcon.com) or call us at (360) 678-8880.

## Offshore Support Market, Concl'd.

are less than 10 years old, down from the 23.56% and 24.30% reported one and five years ago, respectively. Conversely, 32.63% today compared to 31.11% last year and 37.85% five years ago are 25 years or older. Five years ago, the average age of all on the market through Marcon was 23 years, compared to 20 years one year ago and as of this report. Older U.S.-flagged vessels remain on the market, though decreasing in age from 34 years in 2018 to 28 years in 2022 but increasing to 29 now. Foreign flagged crew boats' age remained fairly steady at 16 years one year ago and 18 years five years ago compared to 15 years today, but are still almost half the age of U.S. vessels.

According to *IHS Fairplay Sea-Web*, as of February 22, 2023, there were 7,252 "sea-going" supply vessels over 100GRT worldwide. This is up 62 vessels, or 0.86%, since March 2022. Total horsepower of this fleet is 40,430,837BHP, down 32,882BHP or 0.08% since last year. The U.S. operates 762 supply vessels, or 10.51% of the world market, totaling 3,840,752HP (9.50% of global HP) with a 20.4 year average age, about the same as the worldwide fleet. Since March 2022, the U.S. fleet declined by 1.80%, or 14 OSVs, while total horsepower decreased 62,620BHP or 1.60%. Compared to February 2018, the worldwide fleet is down 2.59% or 193 vessels while total horsepower is down 4.75% or 2,014,618BHP and average horsepower declined from 5,701BHP to 5,575BHP. The U.S. fleet is down 172 vessels, or 18.42%, total horsepower decreased by 16.35% or 750,557BHP and average horsepower increased slightly from 4,916BHP to 5,040BHP. While the worldwide fleet is starting to grow again, albeit with lower powered vessels, the US market continues to shrink as aging and non-working tonnage is scrapped.

*IHS Fairplay Sea-Web* as of March 6, 2023 reports 279 OSVs totaling 1,588,891HP (average 5,695HP), 206 other offshore support vessels and 115 crew or crew/supply vessels, all over 99GT, built or to be built in 2023 or later. Conversely, 1,053 OSVs and 51 crew boats greater than 99GT are shown as scuttled, scrapped or to be broken up. Compared to one year ago, this is up 93 OSVs (or 10.08%) but no change in crew boats. Looking back to pre-COVID October 2018, 591 OSVs and 22 crewboats were noted as scuttled, scrapped or to be broken up, indicating that in less than five years, there was a 78.17% increase in OSVs and a 132% in crewboats scrapped. We know of numerous under 99GT or unclassified OSVs and crew boats scrapped during 2020 and 2021, primarily due to owners reporting lack of work and purchase interest at above scrap levels.

Marcon has completed six sales to date in 2023 with several more pending, following 18 sales and one charter completed in 2022. Since 1983, we have sold or chartered 1,552 vessels and barges, including 86 PSVs, 83 AHTS totaling 403,141BHP, 112 crew / pilot boats, 34 research / survey vessels, 20 utility boats, 19 seismic vessels and nine dive vessels.

Marcon's full March 2023 OSV Market Report will be published the latter-half of April. Our September 2022 OSV Market Report can be found at this link: [Offshore Support Market Report - Sept 2022](#).

Details believed correct, not guaranteed. Offered subject to prior sale or charter.