



Marcon International, Inc. NEWSLETTER

WINTER 2022

Phone: (360) 678-8880
Fax: (360) 678-8890

Website: www.marcon.com
Email: info@marcon.com

Past Newsletters
available in PDF
format at
www.marcon.com

Table of Contents

Article	1, 11 & 12
Towing & Barges	2-7
Offshore Support	8-11
Recent Sales	12

For more extensive
listings of Vessels and
Barges, including
photos, surveys,
drawings, etc.,
visit our website at
www.marcon.com

Offshore Supply Market Update

By: Marcon Staff

Overall, Marcon has seen the number of offshore support vessels listed for sale shrink over the past year and especially when compared to five years ago. Dealing with the past two years of the world in a global pandemic that shut down commerce and economies, vessel owners reacted in a number of different ways. Some shut down operations, selling or scrapping their fleets. Some took advantage of the opportunity to expand, adding to their fleets. Other owners laid up their fleets to just hold on until we could get to the other side of the pandemic. While others scrapped newbuilding plans, including shipyards building on spec. As we are finally seeing resumption of commerce, reopening of ports and reactivation of fleets, we are starting to see some enquiries for supply and crew vessels. We are hearing of seller's price ideas being higher than buyer's price ideas, as well as that vessels are often in rougher than normal condition due to lack of supplies, mariners and money the past two years.

Of the 13,475 vessels and 3,706 barges Marcon tracked as of late February 2022, 2,861 are supply and tug supply boats, with 313 officially on the market for sale. 63.21% of foreign and 77.50% of U.S. flag supply / tug supply boats Marcon has officially listed for sale are directly from Owners. In addition to those for sale, Marcon has 218 straight supply and tug supply vessels listed for charter worldwide, but there are many more in today's market idle and hungry for employment.

1,154 of the vessels tracked by Marcon as of late February 2022 are crew, fast supply & pilot boats with 225 officially on the market for sale, plus 40 boats are available for charter worldwide. 36.4% of the boats officially for sale are U.S. flag. 53 crew boats for sale worldwide were built within the last 10 years. 73 boats, or 30.80%, are 25 years of age or older. The oldest boat listed is a 40', 240BHP 1957 built and located U.S. West Coast. This vessel is counterbalanced by a 170.6' LOA foreign 2022 built crew boat in Southeast Asia and nine foreign 2020 built 45.9' to 127.9' LOA crew boats, six located in the Mediterranean and one each in the Far East, Mid East and Southeast Asia.

Tug supply boats officially on the market for sale listed with Marcon in total is 112, 46 less than one year ago, March 2021 and 35 fewer than five years ago, February 2017. Composition in the last year has changed with the biggest shifts being 13 fewer 12,000-plus HP, seven each fewer 8-9,000HP and 10-12,000HP, five fewer 9-10,000HP and three each fewer 3-4,00HP, 5-6,000HP, 6-7,000HP and 7-8,000HP AHTSs offered. February 2017, the average age of all AHTSs for sale was 16 years old, where U.S.-flag vessels averaged 25 years and foreign-flag AHTSs averaged 16 years. Today, the average age is 15 years old, with U.S.-flag AHTSs averaging 24 years and foreign-flag averaging 14 years old. At the time of this report, 32 tug supply boats officially for sale were either built within the last 10 years or are newbuilding re-sales. Only 11.61% of tug supply boats are 25 years of age. Five years ago, 24.49% of AHTSs for sale were at least 25 years old; one year ago, 10.13% were at least 25 years old; as compared to today's 11.61%, reflecting the purging of older units from the fleets over the past five years. At February

(Continued on page 11)

Featured Listings



DB24971
Deck Barge - Ocean



DB33078
Deck Barge - Ocean



MB21082
Hover Barge



RV11753
Research Vessel



TG09566
Tug - Azimuthing



TG57009
Tug - Twin Screw



Towing & Barges



File: [TG09566](#) Tug - Azimuthing: 65.0' loa x 25.0' beam x 10.0' depth x 7.00' loaded draft. Built in 2006 by Rozema Boat Works; WA. U.S. flag. GRT: 73. 31' x 21' clear deck. FO: 8,500g. FW: 1,000g. M/Es: 2 x MTU S60 total **950BHP**. Thrustmaster 52" dia. props. Firefighting. AirCon. Ship assist and coastal towing. 230m hose reel on back deck. Steel hull, aluminum house. **U.S. West Coast.**



File: [TG17094](#) Tug - Twin Screw: 98.0' loa x 27.6' beam x 10.6' depth. Built in 1965 by Barker Barge; Lockport, LA. U.S. flag. GRT: 127. USCG COI Sub Ch. M Exp Aug 2023. FO: 51,400g. FW: 10,000g. Crane: 10,000lb. Winch: Markey TYS-32D single drum + 2 Beebe aft. Wire: 1,800' x 1.75". M/Es: 2 x CAT D398B total **1,700BHP**. 2-FP 98" x 62" stainless steel props on 9" shafts. About 11,027 hours on M/Es since last full overhaul. Gensets: 2 - 60kW / GM6-71. Quarters: 7 berths. AirCon. Available for short or long term lease, either Time or BBC, or will consider outright sale. Sub Chapter M Compliant. Working. **U.S. Northwest.**



File: [TG21075](#) Tug - Twin Screw: 73.8' loa x 24.4' beam x 12.3' depth x 10.40' loaded draft. Built in 1996 by Damen, Holland. Foreign flag. GRT: 135. LR +100 A1, LMC Coastal Service. 27m2 clear deck. FO: 34.9m3. FW: 9.2m3. BW: 4.5m3. Winch: Ridderinkhof (20T) Hydraulic +20T tow hook. Line Pull: 60T brake. M/Es: 2 x Cummins KTA-38M total **2,120BHP**. 2 - Lips FP props. Kort nozzles. **Bollard Pull: 23.07T**. Pumps: 1 - Cummins 6BTA diesel powered FiFi pump 1,400m3/h. Gensets: 2 - 58kW / Cummins, 440vAC, 60Hz. Firefighting: 1 - monitor (300m3/hr). Quarters: 5 berths. AirCon. Dispersant - 1.5m3; Foam - 2.5m3. Damen Stantug design. **Central America.**



File: [TG24161](#) Tug - Twin Screw: 100.0' loa x 27.1' beam x 12.0' depth. Built in 1968 by Main Iron Works, Houma, LA. U.S. flag. GRT: 149. FO: 32,000g. FW: 5,000g. Winch: 2 - Patterson barge winches. Wire: 100' x 1-1/8". M/Es: 2 x CAT 3512 total **2,400BHP**. 88" x 66" 4-blade stainless props. M/Es rebuilt 2008 starboard and 2010 port. Gensets: 1 - 75kW / GM4-71 (port); 1 - 55kW / GM4-71 (stbd). Quarters: 4 cabins. AirCon. 24' height of eye. Vertical capstan aft. **U.S. East Coast.**



File: [TG32053](#) Tug - Twin Screw: 105.0' loa x 30.2' beam x 14.7' depth x 12.50' loaded draft. Built in 2007 by Rushan City Shpbldg. Co.; China. Foreign flag. GRT: 279. LR +100 A1 Tug +LMC. Light Disp.: 284mt. 85m2 clear deck. FO: 200m3. FW: 24.1mt. BW: 14.2mt. Winch: Thor TH-15HTW-MO8-202B. M/Es: 2 x Cummins KTA50-M2 total **3,200BHP**. 2 - FP props. **Bollard Pull: 40T**. Speed about 12kn. Gensets: 2 - 115kW / Cummins 6CTA8.3-G 400vAC 50Hz. Firefighting: 300m3/h. Quarters: 10 crew. AirCon. **Central America West Coast.**



File: [TG36188](#) Tug - Azimuthing: 96.5' loa x 35.3' beam x 15.85' loaded draft. Built in 1991 by Adelaide Ship Construction Int.; Australia. Australia flag. GRT: 308. DNV-GL +1A1 Tug E0, Special Survey due Oct 2021. Winch: Brattvaag fwd & aft. M/Es: 2 x GM 16V-149T1 total **3,650BHP**. 2 - Ulstein 1650H props. **Bollard Pull: 47mt**. Speed about 12kn on 8mt/day. Gensets: 2 - 100kW / GM, 415vAC 50Hz. **Australia. Prompt.**

Details believed correct, not guaranteed. Offered subject to prior sale or charter.



Towing & Barges, Continued



File: [TG37077](#) Tug - Azimuthing: 75.5' loa x 35.8' beam x 14.4' depth. **Built in 2018** by Turkish SY. Foreign flag. GRT: 290. RINA C +Hull +Mach +AUT-UMS, FiFi, Water Spray, Unrestricted, Greenstar 3. D/D Sep 2021. Dwt: 373mt. FO: 62.0m³. FW: 11.4m³. BW: 21.8m³. Winch: Frequency controlled electric single drum & 50kN capstan. M/Es: 2 x CAT 3512C total **3,750BHP**. 2.1m Schottel SRP-340 FP props. **Bollard Pull: 50mt**. Speed about 12kn free. Gensets: 2 - 86ekW / CAT C4.4. FiFi 1/2. 2 - FFS foam / water monitors. Foam: 3.2m³. 6 in 4 cabins. Robert Allan Ramparts 2300 tug for harbor, terminal and coastal towing. **Mediterranean.**



File: [TG38085](#) Tug - Twin Screw: 85.6' loa x 26.1' beam x 13.3' depth. Built in 2008 by Damen Shipyard. Foreign flag. GRT: 176. LR +100 A1, Tug, +LMC. Dwt: 52T. Light Disp.: 381mt. 80m² clear deck. FO: 80.7m³. FW: 12.2m³. BW: 19.4m³. Winch: towing aft 125T drum; 65T SWL. Wire: 400m x 44mm. M/Es: 2 x CAT 3512B total **3,822BHP**. 2 - 2,350mm FP props. Kort nozzles. **BP: 53.7T**. Speed about 13.2kn. Pumps: Bilge: 2 - 22m³/hr. Gensets: 2 - 95kVA / CAT C4.4 440vAC 60Hz. Firefighting: 300m³/hr. Foam: 5.9m³. Quarters: 8 persons. Damen ST2608 design twin screw tug suitable for towing, mooring, firefighting and pollution control. **Central America.**



File: [TG39002](#) Tug - Twin Screw: 139.0' loa x 34.0' beam x 17.2' depth. Built in 1976 by Burton SY; Port Arthur, TX. Rebuilt: 2000. U.S. flag. GRT: 198. ABS +A1, Towing Service +AMS. D/D & S/S overdue 2015. Dwt: 647T. FO: 129,000g. FW: 12,300g. BW: 122,400g. Winch: Double drum Intercon 74077. Line Pull: 100T. Wire: 2 x 2,200' 2". M/Es: 2 x EMD 16-645E6 total **4,200BHP**. 2 - 115" x 88" 4-blade props. 12,400nm @ 10kn. **Bollard Pull: 52.5ST**. Speed about 10-12.5kn on 104-179gph. Gensets: 2 - 99kW / GM8V71 450v 60Hz. Quarters: 8 berths. Hydraulic tow pins. 65 ton electric barge winches. Tanks coated at last drydocking. Low hours and machinery is all in very good overall condition. Laid up in fresh water. **U.S. West Coast.**



File: [TG40115](#) Tug - Twin Screw: 110.0' loa x 32.0' beam x 19.4' depth. Built in 1972 by Quality Equipment; Houma, LA. Rebuilt: 2000. U.S. flag. GRT: 199. ABS Loadline, Exp. Oct 2023; USCG COI Sub. M Exp. Oct 2024. Light Disp.: 695lt. FO: 80,000g. FW: 6,000g. Winch: Almon-Jonson V-4 Single Drum. Line Pull: 63T. Wire: 2,600' x 2.25". M/Es: 2 x EMD 16-645E2 total **3,900BHP**. 2 - FP 96" x 110" props on 9.75" shafts. Kort nozzles. **Bollard Pull: 55ST**. Speed about 13kn. Gensets: 2 - 75kW / John Deere 4045T, 480vAC 60Hz. Completed "life extension" program 10/2000 at Owner's shipyard. Hydraulic tow pins. **U.S. West Coast. December 2022.**



File: [TG48287](#) Tug - Azimuthing: 83.0' loa x 39.4' beam x 15.1' depth x 16.56' loaded draft. **Built in 2016** by Turkish shipyard. Foreign flag. GRT: 365. RINA C+ Tug +AUT-UMS, Unrestricted, Green Star, Water Spray. S/S due 05/2021. D/D due 05/2019. FO: 97.10m³. FW: 11.2m³. Winch: DMT 011-E300 single drum aft. Wire: 600m x 48mm aft. M/Es: 2 x Wartsila 9L20 total **4,827BHP**. 2 - Rolls Royce US 205 CP props. **Bollard Pull: 67.64mt**. Speed about 11-13kn free. Gensets: 2 - 84ekW / Perkins 4.4TW2GM 400vAC 50Hz 3ph. FiFi 1/2. 2 - 600m³/hr FSS remote monitors. Foam 4.9m³. 6 crew in 4 cabins. Robert Allan Ramparts 2500W ASD tug. Mampaey DCX quick release towing hook. Rubber cylindrical bow fender. D & W fendering around hull. **Mediterranean.**



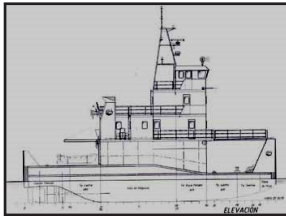
File: [TG57009](#) Tug - Twin Screw: 136.2' loa x 36.5' beam x 17.00' loaded draft. Built in 1978 by McDermott Shipyard; Amelia, LA. U.S. flag. GRT: 199. ABS +A1, Towing Unrestricted Service, +AMS. Special Survey due Mar 2024. Drydock due Mar 2022. FO: 218,000g. FW: 15,800g. Winch: Markey TDS-36 double drum. Wire: 2,200' x 2.25" & 2,800' x 2.125". M/Es: 2 x EMD 16-645E7A total **5,750BHP**. 120" x 80-90" 5-blade props. Speed about 15kn. Gensets: 2 - 99kW / John Deere 4.5L 2841F Tier 2 120/208vAC 3ph 60Hz. Quarters: 8 persons. Triple rudders. MDEC electronic upgrade on M/Es to Tier 2. SOLAS Exempt. **U.S. Northwest.**



Towing & Barges, Continued



File: [TG57129](#) Tug - Twin Screw: 128.5' loa x 34.0' beam x 17.0' depth x 15.80' loaded draft. Built in 1976 by Quality Equip.; Houma, LA. Rebuilt: 2000. U.S. flag. GRT: 188. ABS +A1, Towing Service, +AMS. Exp. Apr 2022. FO: 160,000g. FW: 16,000g. Winch: Intercon double drum / GM6-71. Line Pull: 120T. Wire: 2,600' x 2.25". Stern Roller. M/Es: 2 x EMD 16-645E7B total **5,750BHP**. 2 - FP 114" props on 11.75" shafts. Kort nozzles. **Bollard Pull: 75T**. Speed about 14kn on 5,000gpd. Gensets: 2 - 99kW / GM8V71. AirCon. Anchor handling tug. Tug damaged by uncontrollable fire in galley Jan 9, 1999 and then declared CTL. Tug was completely refurbished / rebuilt in 2000 & placed back into service. **U.S. Northwest.**



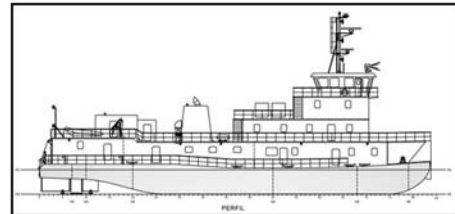
File: [TP13081](#) Push Boat: 81.2' loa x 27.1' beam x 11.8' depth x 6.82' loaded draft. Built in 2008 by Astana SA; Argentina. Foreign flag. GRT: 214. BV +I 5 IN (-) + Pusher -DGL IN + MC, exp. Feb 2024. M/Es: 2 x Volvo Penta total 1,300BHP. 2 - FP props. Vessel reportedly in very good condition, in class and under oil major vetting standards. Just finishing job as of January 2022. **South America East Coast.**



File: [TP14054](#) Push Boat: 54.0' loa x 24.1' beam x 8.6' depth x 8.00' loaded draft. Built in 1973 by William Hantz; Vinton, LA. Rebuilt: 2015. U.S. flag. GRT: 91. USCG COI Sub. M Exp. Jun 2026. FO: 15,000g. FW: 3,000g. Winch: 2 - 20T Beebe. M/Es: 3 x CAT C-18 Tier 3 total **1,500BHP**. 3 - FP 54" x 60" stainless props on 5" stainless shafts. Repowered with new Tier 3 M/Es and new reduction gears installed in 2015. Gensets: 2 - 30kW / GM3-71. Firefighting: 1 - 3" FiFi pump. AirCon. Triple screw inland river towboat reportedly in good condition. **27' height of eye**. 13' tall push knees from waterline. Texas deck. No flanking rudders. 3 large barn door rudders. 1/2" Bottom plate. Steel in good condition and Owner can provide UT readings. New sewage system installed in 2021. **U.S. Gulf Coast.**



File: [TP20003](#) Push Boat: 72.0' loa x 30.0' beam x 10.0' depth. Built in 2009 by Hope Services, Houma, LA. U.S. flag. GRT: 144. Not classed. FO: 16,292g. FW: 4,430g. DW: 5,710g. BW: 3,714g. M/Es: 2 x Cummins KTA38-MO II total **2,000BHP**. 2 - FP props. Tier 2 M/Es. Gensets: 1 - 55kW / Stamford; 1 - 85kW / Stamford. Firefighting: FiFi deck equipment; engine room CO2. Quarters: 5 persons. AirCon. Triple deck push boat. Push knees forward. **Height of eye 29'**. Winches: 2 - 30T Wintech electric make-up; 2 - 40T Nabrico DF-156 hydraulic make-up; and 1 - 2T High Tide electric davit. Fully fitted with modern navigation equipment. Owens Kleen Tank marine sanitation system. Available for sale or charter. **U.S. Midwest.**



File: [TP40013](#) Push Boat: 137.8' loa x 36.0' beam x 9.9' depth x 8.00' loaded draft. **Built in 2013.** Foreign flag. GRT: 274. RINA C +HULL + MACH Inland Waterways. Exp Nov 2024. FO: 300m3. FW: 72m3. BW: 250m3. M/Es: 2 x EMD 8-71 0G7C-T2 total **4,000BHP**. Kort nozzles. Gensets: 2 - John Deere 6068 / Stanford 120KVA. Quarters: 15. Contact Marcon for more details. **South America East Coast.**



File: [DB12084](#) Deck Barge - Inland: 120.0' loa x 55.0' beam x 7.0' depth. Built in 2004 by HBC Barge LLC. U.S. flag. GRT/ NRT: 388. Lt Displ: 250lt. Bulkheads: 2 - long, 4 - trans. Water-tight Compartments: 15. Crane: Manitowoc 4100 S2 230T Crawler. Inland spud barge with crane. 3 x 3ft. Dia. Spuds/ wells. Deck strength 2,000psf 10ft. Either side of centerline and 1,200psf other areas. Barge and crane cannot be sold separately. **U.S. East Coast. Prompt.**

Details believed correct, not guaranteed. Offered subject to prior sale or charter.



Towing & Barges, Continued



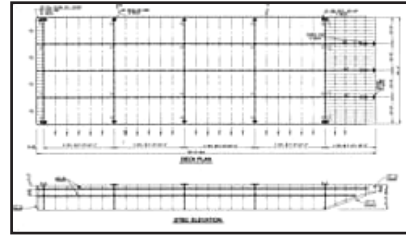
File: [DB15440](#) Deck Barge - Coastal: 154.0' loa x 40.6' beam x 8.2' depth x 0.90' light draft x 6.56' loaded draft. Built in 2008. Colombia flag. **Dwt: 950T.** Deck Load: 6MT/m². **Holds 60 TEU or 30 FEU.** Caribbean.



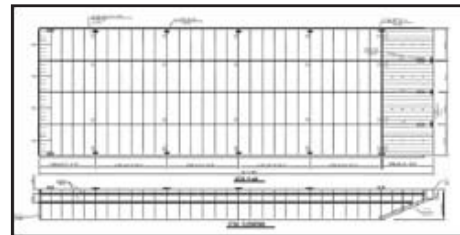
File: [DB19030](#) Spud Barge - Inland: 190.0' loa x 30.5' beam x 9.0' depth. Rebuilt: 2017. U.S. flag. Class: Not classed. **Dwt: 270st.** 190' x 30' clear deck. Deck Load: 2,000lb/ft². Deck/spud barge converted from pontoon barge in 2017. Two 45' x 20" spuds, manual lift with crane. External spud wells. In 2017, new anodes, sandblasted and painted inside and out. Reportedly in like-new condition. Photos, drawings and UT reports upon request. U.S. Gulf Coast.



File: [DB20058](#) Deck Barge - Ocean: 200.0' loa x 198.5' lbp x 54.0' beam x 13.0' depth x 2.00' light draft x 10.45' loaded draft. Built in 1967 by Gunderson, Portland, OR. U.S. flag. GRT: 952. NRT: 285. ABS Loadline exp Aug 2022. USCG COI. Exp. Feb 2026. **Dwt: 2,500T.** Rakes: Double. Bulkheads: 1 long 'l / 4 transv. Capacity: 19,783bbl. Tanks: 7. Crane: Hose boom. Gensets: 1 - 2kW. Ex-Single skin petroleum barge. Spoon bow. Tow sklegs aft. Breakwater (38") forward. TPI 24.5ST. Originally built as deck barge, then put into black oil service before being sold & converted back to deck service. 6" timber wear deck. 18' x 30' stern ramp. U.S. Northwest.



File: [DB22069](#) Deck Barge - Ocean: 193.0' loa x 185.0' lbp x 60.0' beam x 14.0' depth x 11.40' loaded draft. Built in 1998 by Corn Island Shipyard; Grandview, IN. Canada flag. GRT: 1,366. NRT: 409. ABS +A1 Barge expired. Lt Displ: 555lt. **Deck Cargo: 3,550T.** Deck Load: 2,500lb/ft². Rakes: Bow only. Bulkheads: 3 long'l / 5 transv. Watertight Compartments: 20. All welded steel. Four 12" double barrel bits and two towing padeyes. A 220' x 60' 1998 built may also be developed in same location. See DB22073. Canada East Coast. Prompt.



File: [DB22073](#) Deck Barge - Ocean: 220.0' loa x 60.0' beam x 14.0' depth. Built in 1998 by Corn Island Shipyard; Grandview, IN. Canada flag. GRT: 1,366. NRT: 409. ABS +A1 Barge expired. Lt Displ: 645lt. **Deck Cargo: 3,251lt.** Deck Load: 2,500lb/ft². Rakes: Bow only. Bulkheads: 3 long'l / 5 transv. Watertight Compartments: 24. All welded steel. Four 12" double barrel bits and two towing padeyes. A 193' x 60' 1998 built may also be developed in same location. See DB22069. Canada East Coast. Prompt.



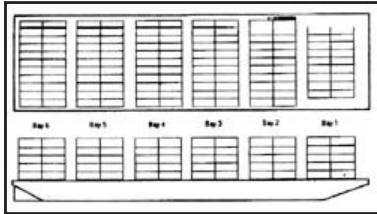
File: [DB24971](#) Deck Barge - Ocean: 250.1' loa x 72.1' beam x 15.5' depth x 12.75' loaded draft. Built in 1988 by Galveston SY; Galveston, TX. U.S. flag. GRT/NRT: 1,942. ABS Loadline (on drydock now for renewal). **Dwt: 5,450T.** Lt Displ: 970T. **Deck Cargo: 5,450ST.** Deck Load: 1,500lb/ft². Rakes: Double. Bulkheads: 2 long'l / 6 transv. Watertight Compartments: 21. Towing sklegs aft. Interior not coated. 8' bin walls and new concrete wear deck installed Q1 2016. Extensive internal steel work also performed in 2017-2018. Portable 50' x 5' twin ramps available for additional charge. Not officially on the market, but owner will consider a sale. On drydock now (March 2022) for maintenance and renewal of loadline. Expected to be completed in a few months. U.S. Northwest.



Towing & Barges, Continued



File: [DB25101](#) Deck Barge - Inland: 250.0' loa x 240.0' lbp x 72.0' beam x 15.0' depth x 2.00' light draft x 12.00' loaded draft. Built in 1981 by Bergeron Industries; Braithwaite, LA. **Rebuilt: 2020.** U.S. flag. GRT: 1,828. NRT: 548. Ex - ABS Ocean Load-line. **Dwt: 4,800T. Deck Cargo: 4,800T.** Deck Load: 1,000lb/ft². Rakes: Double. Bulkheads: 2 long'l / 6 transv. Watertight Compartments: 21. Flat deck cargo barge. Long spoon bow with fixed towing skegs aft. 18" round flush deck hatch covers. Dec. 2020: Owner put the barge through an extensive dry-docking with steel work, exterior blast and paint. Barge is now reportedly in very good overall condition. **U.S. West Coast. Prompt.**



File: [DB30091](#) Deck Barge - Ocean: 300.0' loa x 90.0' beam x 18.5' depth. Built in 1982 by Misener Marine; Tampa, FL. U.S. flag. GRT/NRT: 4,248. ABS Loadline exp. Oct 2022. Laid-up. USCG COI expired Mar 2020. **Dwt: 8,505lt. Deck Cargo: 8,505LT.** Deck Load: 1,200lbs/ft². Rakes: Double. Max container capacity 640/320 TEU/FEU with stack weight 20'/40' at 75lt/150lt. Turnbuckles & rigid rod lashing gear. Semi-automatic twist-locks. I-beams 18" high across main deck on frames. Barge is in laid-up status with ABS & needs significant repairs to complete 5-year survey (may be economically unfeasible). Offered "as is, where is". **U.S. East Coast.**



File: [DB33078](#) Deck Barge - Ocean: 330.6' loa x 78.0' beam x 20.5' . Built in 1982 by Marine Power & Eq.; Seattle, WA. Rebuilt: 2005. U.S. flag. GRT/NRT: 4,564. ABS +A1 Barge exp. Oct 2023. **Dwt: 8,929T. Lt Displ: 1,360T. Deck Cargo: 8,929LT.** Deck Load: 1,275lb/ft². Rakes: double. Bulkheads: 1 long'l / 7 transv. Watertight Compartments: 18. FO: 900g. BW: 1,548ST. Pumps: Ballast: 1 - 8" Crown Model 3 COD9 / 50HP electric. Winch: 2 - Patterson Hand Winches. Gensets: 1 - 99kW / John Deere. Spoon bow. Converted to lumber barge in 2005 with 22' tall stanchions capable of holding 6.7 million board feet. 8' apron added to stern. New ballast system installed in 2005 for trim while loading / discharge. **U.S. West Coast.**



File: [DB40079](#) Deck Barge – Ocean (Available for Charter Only): 400.0' loa x 76.0' beam x 20.0' depth x 4.00' light draft x 14.30' loaded draft. Built in 1969 by Bethlehem Steel Corp.; San Francisco, CA. U.S. flag. GRT/NRT: 5,051. ABS + A1 exp. Jan 2024, USCG COI. **Dwt: 9,100T. Deck Cargo: 9,100T.** Rakes: Double. Bulkheads: 2 long'l / 7 transv. Watertight Compartments: 24. ITC- 4285G. Spray shield forward. Towing skegs aft. Ex-rail car barge, now working in flat deck service. Concrete wear deck. Bin wall. **Potentially open for short or long-term charters.** Further details on request. **U.S. Northwest.**



File: [DK14060](#) Crane Barge - Inland: 140.0' loa x 60.0' beam x 10.0' depth x 5.50' loaded draft. Built in 1945 by Odenbach Ship Building. U.S. flag. Rakes: Bow only. Bulkheads: 1 long'l / 6 transv. US Navy Stockless anchors. Windlass. **Crane: 65T** Revolving with 25HP Swing Motor. Winch: 3 Drum 75HP. Gensets: 1 - 200kW / GM 6-71NT. Undocumented ex-US Navy derrick barge for sale. Bow capstan. Two fuel tanks. Crane operational but not certified. 2011 Survey available on request. **Barge available with or without crane.** Spud wells installed Feb. 2018. Currently working. Needs painting. **U.S. East Coast.**



File: [HB21741](#) Dump Barge - Propelled: 217.5' loa x 205.7' lbp x 41.0' beam x 17.1' depth x 17.06' loaded draft. **Built in 2018** by Indian shipyard. Foreign flag. GRT: 1,240. IACS Coastal Service. Dwt: 1,900T. Rakes: Ship shaped bow. **Hold Capacity: 1,000m³.** FO: 132T. FW: 100T. Gensets: 2 - 100ekW. Quarters: 16 crew. Fitted with 12 bottom doors for dumping. RSV type 4. 2 - 1,000BHP @ 1,800RPM main engines. Speed 10kn @ 80% MCR. **Southwest Asia.**

Details believed correct, not guaranteed. Offered subject to prior sale or charter.



Towing & Barges, Continued



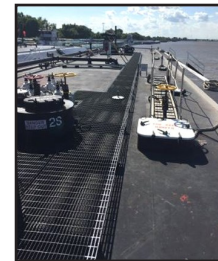
File: [MB09859](#) Jack-Up Barge: 98.4' loa x 78.7' lbp x 59.1' beam x 7.0' depth. Foreign flag. **Deck Cargo: up to 400mt on 410m2 clear deck.** Deck Load: 15T/m2. Modular self-elevating platform. **38.5m legs.** Suitable for near shore construction work such as newbuilding or maintenance work on jetties, breakwaters and piling. Additional deck equipment as winches, bollards, fairleads and piling gates can be easily installed with the standard coupling systems. **Mid East. Prompt.**



File: [MB21082](#) Hover Barge: 210.0' loa x 82.7' beam x 5.6' depth. Built in 2009 by Sundial Marine Construction & Repair. U.S. flag. Not classed. **Deck Cargo: 450T on 9,000ft2 clear deck.** Bulkheads: 4 long'l / 4 transv. FO: 8,000g. Pumps: Fuel transfer system. 2 - 1,120lb. plow type in chutes anchors. Windlass: 2 - JK Fab. hyd. single drum. Crane: 2 - Grove M977 hyd. Knuckleboom. Winch: 4 - 30T Lantec 540 single drum hyd. Deck with 1.25" wire. Gensets: 1 - 150kW CAT D150-8 / CAT2682 208/120vAC 60Hz 3Ph. World's largest hover barge designed & engineered by BMT Nigel Gee, U.K. and Hovertrans, Ltd. Towed by vessel, tractor or other method. Can haul up to 450mt containerized or odd dimension project cargoes & modules on a 55.2m x 16.2m heavy deck over shallow water, ice, slush, swamps, wetlands, tundra and other environmentally challenging & sensitive terrains where conventional vehicles & barges are unable to work. Hovers about 5' off the surface with minimal footprint. Loaded displacement about 1,100T. Hull built of DH-36 low temperature (-20 deg. F) steel. Epoxy coated exterior deck & side shell. Designed operating temperature +40 deg. C to - 20 deg. C. 16' x 10' midships moon pool for coring & drilling ops. 10mt/m2 bow ramp plus two side ramps with Braden hydraulic side winches for Ro/Ro ops. Four 1,051HP CAT3412 engines drive Woodcock & Wilson lift fans about 5.5' in diameter in custom built, sound attenuated aluminum engine/fan houses with CO2 fire suppression systems. Two 3,000psi @ 45gpm hydraulic power packs with CAT3126 engines. Cranes refurbished by Leavesley International. Barge RF wireless radio remote control system with four belly pack and local station. 4 controllers included. 8 deck lights. 4 Panama chocks & 5 bollards aft for making up to push tug. Spare rubber skirting. Launched early 2014. Commissioned, passed hover lift test and christened April 2017. Fully operational. Owner will consider sale or charter. **U.S. Northwest. Prompt.**



File: [MB25058](#) / [MB25059](#) Accommodation Barge (Two Available): 261.0' loa x 53.0' beam x 14.0' depth x 9.84' loaded draft. Built in 1945. Rebuilt: 2009. Foreign flag. GRT: 3,490. ABS. RMR. Crane: 1 - 5T Hydraulic. Gensets: 2 - 800kW / CAT. **Quarters: 290.** Ex-deck barge converted to accommodation barge. Suitable for cold weather environment. Two RO watermakers. 150-person dining area. Spare generators stored ashore can be included. **U.S. Gulf Coast. Prompt.**



File: [TB29754](#) / [TB29755](#) Tank Barge – Inland (Two Available): 297.6' loa x 54.0' beam x 12.0' depth. Built in 1995 by Trinity Marine, Gulfport. U.S. flag. GRT/NRT: 1,619. USCG COI Lakes, Bays & Sounds & Limited Coastwise. Exp. Oct 2020. **Capacity: 30,000bbl. U.S. Gulf Coast.**



File: [TB80042](#) Double Hull Tank Barge - Ocean: 337.0' loa x 320.8' lbp x 74.0' beam x 25.0' depth x 4.00' light draft x 21.90' loaded draft. Built in 2006 by Senesco Marine Inc.; N. Kingston, RI. U.S. flag. GRT: 5,855. NRT: 3,938. ABS +A1 Oil Barge. **Dwt: 11,745T.** Pumps: 2 - 12" Byron Jackson LS4 / John Deere L1276. 5,000lbs anchors. Windlass: Hyd bow anchor. Crane: 2 - 2T hose cranes. Gensets: 1 - 55kW / Northern Lights. Double hulled ocean tank barge. Pumping rate 4,500/bph easy pump. EMS radar gauging; EMS high level / overflow alarm; MMC closed tape gauging; 2 - 60T push / tow winches; 2 - hyd capstans. **U.S. West Coast. June 2022.**

Details believed correct, not guaranteed. Offered subject to prior sale or charter.



Offshore Support



File: [CB05115](#) Crew Boat: 51.0' loa x 13.0' beam x 6.1' depth. Built in 1961 by Breau Bros. U.S. flag. GRT: 20. FO: 830g. M/Es: 2 x GM 8V71 total 460BHP. 2 - FP props. Starboard main engine rebuilt about 2011. Gensets: 1 - 8kW / Northern Lights. 12 berths. AirCon. **Passengers: 20.** Aluminum hull. Replated port/starboard side shells with 5086 1/4" aluminum plate aft of cabin. Former crewboat converted to charter fishing / whale watching under Mexican registry. Presently U.S. flag Passenger Inspected / Coastwise Unrestricted - Recreational. 25 person Elliot life raft. LED navigation lights. Continuous 3,000gph flow-thru 350 gallon capacity seawater bait tank. ARC electronics remote control searchlight. All electrical wiring replaced during conversion. Stored ashore. **U.S. West Coast.**



File: [CB11020](#) Crew Boat: 115.0' loa x 24.0' beam x 8.9' depth. Built in 1981 by Progressive, LA. U.S. flag. GRT: 98. USCG COI. 48-person total, 100 miles offshore, exp. Sept 2023. **Deck Cargo: 45T on 60' x 20' clear deck.** FO: 6,000g. FW: 10,000g. M/Es: 4 x John Deere 6135 total 2,300BHP. 4 - FP 36" x 34" props. 1,050nm range. M/Es: 3 - Tier 2; 1 - Tier 3. **Speed about 24kn** on 55gph. Gensets: 2 - 30kW / John Deere 4045 Tier 2. 5 berths. **44 passengers.** Progressive design, aluminum hull crew-boat. Repowered 2012. Interior of vessel completely refurbished in 2016. Working. **U.S. Gulf Coast.**



File: [CB12522](#) Crew Boat: 125.0' loa x 24.9' beam x 7.4' depth. Built in 1979 by Breau Bay Craft. U.S. flag. GRT: 96. USCG COI - Oceans renewed Aug 2021. Dwt: 96T. **Deck Cargo: 60LT on 60' x 21' clear deck.** FO: 4,700g. FW: 2,700g. M/Es: 2 x GM 16V149TI total 2,800BHP. 2 - FP props. **Speed about 20kn** cruise on 100gph. Gensets: 2 - 30kW. AirCon. **Passengers: 71** persons. Vessel is in excellent condition. 65 seats in passenger cabin. Extensively refit in 2016 with new interior coloring, bulkheads, cabinets in galley / salon area. Currently working, but available for sale/charter. **U.S. West Coast.**



File: [CB16329](#) Crew Boat: 165.0' loa x 30.0' beam x 12.0' depth. Built in 2000 by Penguin Boat Int; Singapore. Panama flag. GRT: 448. ABS + A1 Crew Boat HSC, AMS. Exp. Apr 2025. IMO - Marpol/STCW/SOLAS. ISM & OSV. Dwt: 380mt. **240mt on 82' x 25' clear deck.** Hold capacity: 18m3. FO: 120m3. FW: 151mt. DW: 150mt. M/Es: 4 x CAT 3516B total 9,500BHP. 4 - 6-blade FP props. Joystick control. Bowthruster 140BHP. **Speed about 22-28kn.** Gensets: 2 - 140kVA / CAT3306DITA 220/440vAC. Firefighting: 300m3/h. Deck spray shield. 12 in 5 cabins. **Passengers: 200** airline seats. 3.9' high cargo rails aft. Oil dispersant booms. **Southeast Asia.**



File: [LC17036](#) Landing Craft: 170.0' loa x 36.0' beam x 10.0' depth. Built in 1999 by Mariner LLC; USA. Togo flag. GRT: 422. NASCA. Last DD 2015. Dwt: 622T. **Deck Cargo: 400T/24TEU on 6,152ft2 clear deck.** FO: 19,000g. FW: 15,000g. M/Es: 2 x CAT 3412TA total 1,440BHP. 2 - FP props. **Speed about 6-7kn** on 60-70g/hr. Gensets: 2 - 60kW / John Deere. 9 in 3 cabins. Bow ramp 20' x 22'. Raised pilothouse with cargo space underneath. **Caribbean.**



File: [LC32781](#) Landing Craft: 327.4' loa x 82.0' beam x 21.3' depth. Built in 2008 by Shin Yang SY; Malaysia. Foreign flag. GRT: 4,562. BV +Hull +Mach Deck Ship / Container Ship Unrestricted Navigation thru Aug 2022. Dwt: 7,185mt. FO: 500mt. FW: 2,200mt. Crane: Electric provision. Winch: P/S aft hyd. mooring. Wire: 200m 72-74mm. M/Es: 2 x CAT 3512B total 3,150BHP. 2 - 4-blade FP props. **Range about 7,300nm @ 9kn.** Bowthruster 8T. **Speed about 9-11kn** on 8-11mt/day. Gensets: 3 - 250kW / Cummins QSM 11-DM; 1 - 150kW / Cummins 6BTA5.9. 17 in 7-1, 5-2 berth cabins. Conan Wu & Associate design 99m landing craft. **Capacity maximum 387 TEU** in four tiers. 36 each 32 amp reefer plugs. 11m fixed length x 8m wide, 100mt SWL bow door ramp with 8m x 2m upper flap. **Sold to current owners by Marcon.** M/Es overhauled by CAT early 2020. Vessel completed charter Dec 2021 and is available prompt. **South America East Coast.**



Offshore Support, Continued



File: [RV11753](#) Research Vessel: 117.3' loa x 53.0' beam x 24.4' depth. Built in 1995 by SWATH Ocean Systems; San Diego, CA. Rebuilt: 1999. U.S. flag. GRT: 498. ABS Ocean Loadline exp. Jul 2025. USCG COI exp. Apr 2026. FO: 22,000g. FW: 2,400g. BW: 20,077g. Crane: 1 - HIAB; 1 - Allied (for ROV). Derrick/A-Frame: 1 - 13,000lbs A-Frame. Winch: CTD Winch System Dynacon 12030. M/Es: 5 x CAT total 2,500BHP. 2 - FP props. **Endurance 2,500nm;** Diesel Electric; Bowthrusters 2-300HP Omnithruster type. Speed about 9-12.5kn. **Quarters: 26** in 14 staterooms. AirCon. Aluminum 117-foot small water-plane area twin hull (SWATH) oceanographic research / ROV support vessel. She serves as a stable platform for deploying, operating and recovering a tethered remotely operated vehicle (ROV not included for sale) to a depth of 4,000 meters, conducting hydro-casts (CTD) and other oceanographic activities with state-of-the-art equipment. General ROV operations are vessel's primary mission. Vessel operations typically consist of three-to-seven-day voyages. Extended voyages of two to three months' duration are possible and are usually undertaken once each year. Extended voyages are made up of several legs which vary in length up to a maximum of 12 days per leg. Vessel has worked offshore California, Hawaii, Oregon and Mexico. Typical crew is 10 persons with an additional 16 berths for scientists and ROV staff. Vessel is diesel-electric with a common power bus connecting five generators. Any combination of generator operation will provide power for both propulsion and other vessel operations (note: cannot use 190kW gen on the bus with the other four generators). This design arrangement provides a high level of machinery plant redundancy and operational flexibility. Propulsion power is transmitted through two duplicate drive trains, each consisting of a DC electric motor and fixed pitch propeller. Silicon controlled rectifiers (SCRs) are used to convert generated AC power to DC propulsive power. Two electric motor-driven bow thrusters are installed to enhance maneuvering and station-keeping. Generators include two CAT 3512, 850kW; two CAT 3408, 350kW; and one CAT 3306B, 195kW. MSD. Water-maker. VSAT system. Nautronix ASK 4001 **Dynamic Positioning** system. Sonardyne Ranger 2 Ultra Short Baseline tracking system. Motion control. Ribcraft 5.85m rescue boat with outboard. CTD Winch System Dynacon 12030. ROV Umbilical Winch, Dynacon TV3615K/SW3616K consisting of storage drum, traction winch and motion compensated overboard sheave crane. Storage drum is designed to store 5,000 meters of 0.680 inch diameter armored umbilical. 13,000 pound capacity A-Frame over stern with 13' to 14' clearance. Allied crane for ROV over-boarding rated at 23,780lbs with no extension. Presently located in California and has various work pending for 2022. Owners will consider offers basis delivery "as is, where is" 4Q 2022. U.S. West Coast.



File: [RV18641](#) Research Vessel: 186.0' loa x 40.0' beam x 16.0' depth. Built in 1990 by McDermott Shipyard; Morgan City, LA. U.S. flag. GRT: 495. Ex- ABS + A1 (E) + AMS, ABS Loadline. Laid up with several O/S recommendations. USCG COI Subchapter "U". 140LT on 46'x40'/32'x20' clear deck. FO: 68,000g. FW: 15,000g. BW: 102,000g. Crane: 11T. Winch: 4 - Fritz Culver vertical traction 4pt mooring. Line Pull: 10T/each. M/E: 1 x Cummins KTA50 total 1,250BHP. 1 - 90" x 74" FP props on 7" shafts. 2 - 300HP Ulstein Z-drives, 1 - 400HP Omni thruster forward. Bowthruster 400HP. Speed about 11kn. Gensets: 3 - 650kW / Cummins 1728; 1 - 100kW / Cummins NT855 450vAC 60Hz. Quarters: 41 (can be increased). AirCon. Large Galley, laundry. Originally built for U.S. Navy as a torpedo test craft. Can anchor in water up to 2,400'; maintain position and work up to Sea State 5. Large scientist space, excellent research platform, cable splicing etc. or OSV. 2 - Stockless 1,250lb anchors fitted plus 2 - 750lb anchors aft in storage and not currently fitted. **Sold to current owner by Marcon. U.S. Northwest.**



File: [SU13729](#) Supply Boat - AHTS: 137.8' loa x 36.1' beam x 16.1' depth x 11.50' light draft x 13.61' loaded draft. **Built in 2022** by Chinese shipyard. Hong Kong flag. GRT: 497. BV I + Hull + Mach Special Service AHT, Offshore Support/Standby, FiFi-1, Water Spraying, Unrestricted Navigation. 160m2 clear deck. FO: 326m3. FW: 83.3m3. Crane: 1.25MT/8mt @ 9.75m/2m. Winch: 180T double drum brake. Line Pull: 65mt. Wire: 600m x 52mm. Stern Roller. M/Es: 2 x Cummins QSK60-M total **4,400BHP**. 2 - 4-blade FP props. Kort nozzles. Bowthruster 200kW. **Bollard Pull: 60mt**. Speed about 15.51kn. Pumps: FO: 36m3/h Desmi; FW: 36m3/h Desmi. Fire: 1 - 2,450m3/h. Gensets: 2 - 240kW / Cummins & 1 - 60kW / Cummins 400vAC 50Hz 3Ph. Firefighting: FiFi-1. 2 - 1,200m3/hr remote monitors; Foam: 9.07m3. 26 persons in 9 cabins. Air-Con. Anchor handling utility tug. Bulbous bow. 200T SWL hydraulic strong jaw & tow pin. 5T hydraulic capstan & 10/5T tugger winch. Reel storage for 1,000m 52mm wire. 22mm deck plate in way of anchor handling area. MARPOL sewage treatment plant with two tanks. 1 - 0.25m3/hr desalination plant optional. 2 - 6m oil dispersant booms with 5.77m3 tank. Newbuilding ready for delivery with sea trials passed. Further details, small scale drawing, owner's brochure and price guidance on request. **Far East.**

Details believed correct, not guaranteed. Offered subject to prior sale or charter.



Offshore Support, Continued



File: SU15060 Supply Boat: 150.0' loa x 36.0' beam x 12.0' depth x 7.50' light draft x 9.98' loaded draft. Built in 2005 by Master Boat Builders Inc. Foreign flag. GRT: 447. Overseas Marine Cert. Exp. Jan 2025. Last DD 2020. Ex ABS Int. Load Line. Dwt: 518T. **Deck Cargo: 300T on 27 x 9m clear deck.** FO: 60,600g. FW: 8,400g. BW: 48,000g. Crane: Palfinger 4.5T (optional). M/Es: 2 x CAT 3508 total 1,800BHP. Bowthruster Schottel. Speed about 11kn on 23-48gph. Pumps: DW: 625gpm @ 150'; FW: 360gpm @ 100'; FO: 360gpm @ 100'. Gensets: 2 - CAT C9DI. Firefighting: 1-FiFi monitor 1,300gpm @ 240'. **Quarters: 20 berths.** A-frame 15T (optional). Satcom (optional). Operating. **Caribbean.**



File: SU18069 Supply Boat: 180.0' loa x 40.0' beam x 14.0' depth. Built in 1980 by Halter Marine; Moss Point, MS. U.S. flag. GRT: 267. ABS Loadline. USCG COI exp. May 2025. Dwt: 994T. **Deck Cargo: 640LT on 110' x 30' clear deck.** FO: 43,000g. FW: 20,000g. DW: 140,000g. Dry Bulk: 4,000ft³. Liq. Mud: 952BBL. Crane: TRIPLEX LM-30. M/Es: 2 x CAT D399TA total 2,250BHP. 76" x 70" props. Bowthruster 300HP. Speed about 12kn on 94gph. Gensets: 2 - 125kW / GM8V-71 450v 60Hz. 20 in 8 cabins. Passengers: 13. Available end Sept / early October 2022. **U.S. Northwest.**



File: SU18125 Supply Boat: 180.0' loa x 38.0' beam x 13.5' depth. Built in 1972 by Halter Marine, LA. Rebuilt: 1995. Togo flag. GRT: 631. ABS Loadline. USCG exp June 2004. 130' x 30' clear deck. FO: 58,000g. FW: 2,000bbl. BW: 2,950bbl. Dry Bulk: 3,000ft³ in 4 tanks. Liq. Mud: 1,150bbl. M/Es: 2 x GM 16-149N total 1,840BHP. 2 - FP props. Stern controllers. Bowthruster. Pumps: FO 340gpm @ 150'. BW 400gpm @ 200'. Gensets: 2 - 75kW / GM4 - 71 230 / 440vAC 60Hz. Firefighting: 1,000gpm @ 450' fire monitor. 18 berths total. Ballast tanks coated for fresh water. Coated in 1999. Stern ramp. Needs M/E replaced. **Caribbean.**



File: SU18163 Supply Boat - AHTS: 193.9' loa x 45.3' beam x 18.0' depth. Built in 2011 by Guangzhou Panyu Lingshan SY, China. Vanuatu flag. GRT: 1,123. ABS A1, FiFi 1, OSV, AMS, DPS-1, ISM, ISPS, MLC. SS due 9/16. Last DD 04/16. In lay-up status. Full SOLAS. Dwt: 1,135mt. **Deck Cargo: 500mt on 4,000ft² clear deck.** FO: 419.5M3. FW: 494.2M3. DW: 178m3. BW: 165.7M3. Dry Bulk: 113m3 in 4 tanks. Liq. Mud: 134.5m3. Crane: 1 - Elect. Hyd. 2T @ 6m. Winch: 1 - Double drum. Line Pull: 120T. Wire: 1,000m x 54mm (none fitted). Stern Roller. M/Es: 2 x CAT 3516B HD total **5,150BHP.** 2 - Berg CP props on 2 - Berg shafts. Stern thruster: 8T. Bowthruster 8T. **Bollard Pull: 68.68MT.** Speed about 12.5-13.5kn. Gensets: 2 - 450kW 415v 50Hz 3ph; 2 - 400kW / CAT 415v 50Hz. Firefighting: 2 - 1,200m3/hr wheelhouse controlled mon.; 11.6m3 foam tank. Quarters: 30 total. AirCon. DPS-1 PSV / AHTS. Daily (24 hrs) fuel consumption at peak speed and summer load line draft is 11mt @ 100% MCR; at cruising speed and summer load line draft is 8mt @ 85% MCR. 8 ton each bow & stern tunnel thrusters. Controllable pitch propellers and Independent rudders. Marine Technologies DP-1 **dynamic positioning** system. Stern roller currently removed & lashed down on back deck. Stern extension of 13.45' / 4.1m added (included in current 193.85' LOA) for previous charter to extend clear deck to 4,000ft² for PSV duties. Original LOA 55m/180.4' with 337m²/3,625ft² clear deck without stern extension. All modifications approved by ABS. Towing/AH winch, tuggers, tow pins and shark jaws remain fitted. Anti-pollution equipment with 11.6m3 detergent tank. Vessel last drydocked April 2016 with credit / commencement of special survey due September 2016. Vessel in lay-up status since with SS not completed since Summer 2016. TRY ALL OFFERS. **U.S. Gulf Coast.**



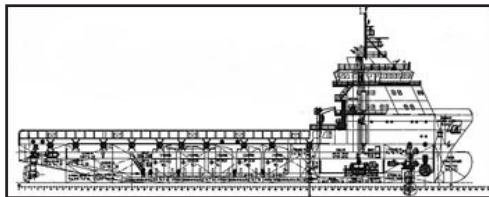
File: SU18508 Supply Boat - AHTS: 185.0' loa x 40.0' beam x 13.5' depth. Built in 1978 by Halter Marine; Moss Point, MS. U.S. flag. GRT: 181. ABS Loadline exp. Oct 2023. **550LT on 120' x 32' clear deck.** FO: 80,000g. FW: 45,000g. DW: 235,000g. Dry Bulk: 6,000ft³ in 6 tanks. Liq. Mud: None. Crane: 1 - 15T Alaska Marine. Winch: Smatco 66 DAW. Wire: 2,000' x 1.75"; 2,000' x 10". M/Es: 2 x EMD 16-645CE2 total **3,900BHP.** 90' x 65" 4-blade SS props on 9" x 24.5' SS shafts. North Sea Stacks. 1" sheer strake. Bowthruster 300HP. **Bollard Pull: 37.5ST.** Speed about 12.5kn on 105gph full. Gensets: 2 - 99kW / GM8V71 440vAC 60Hz. 19 in 7 cabins. **Built to ABS +A1, Ice Class "C". U.S. West Coast. End May 2022.**



Offshore Support, Concluded



File: SU21077 Supply Boat - AHTS: 211.0' loa x 49.2' beam x 22.0' depth. Built in 2002 by INP Heavy Industries; S. Korea. Singapore flag. GRT: 1,864. DNV-GL +1A1, Tug, SF, E0, DP AUTR. S/S due Sep 2022. D/D due Oct 2020. Dwt: 2,117mt. 930mt on 415m2 clear deck. FO: 918m3. FW: 579m3. DW: 565m3. BW: 565m3. Dry Bulk: 187m3 in 4 tanks. Liq. Mud: 422m3. Calcium Chloride / Brine: 140m3. Crane: 2T @ 10m fixed boom. Winch: 250mt Brattvaag AHT; 2 - 6mt tuggers; 2 - 10mt capstans. Line Pull: 150T @ 5.7m. Wire: 1,400m x 56mm. Stern Roller. M/Es: 2 x Bergen BRM-6 total **7,200BHP**. 2 - Rolls Royce CP props. Kort nozzles. 2 - 590kW stern thrusters. Bowthruster 2 -590kW. **BP: 83MT**. Speed about 12-14.6kn on 107m3/d @ 10kn. Gensets: 2 - 1,600kW / shaft; 2 - 250kW / CAT 3406; 1 - 70kW / CAT 450vAC 60Hz. Fifi: 2 - 1,200m3 + 2 monitors. 29 in 19 cabins. Advanced & versatile UT-738, multipurpose AHTS well suited to support jack-up rigs & offshore installations including ROV ops. Large accommodations capacity including hospital. 2 - 160mt SWL tow pins. 1 - Karmoy 300mt shark jaws. 76mm chain gypsy mounted on work drum. Good station-keeping ability with Alstom dual redundant **ADP 21DP system**. Hi-lift flap rudders. **Africa West Coast**.



File: SU28576 Supply Boat - Azimuthing: 285.7' loa x 61.7' beam x 24.3' depth. Built in 2014 by Fujian Mawei Shipbldg.; China. Foreign flag. GRT: 3,601. ABS +A1, FiFi-1, OSV, +AMS, +ACCU, +DPS-2, UWILD, Unrestricted. S/S due Jul 2024. D/D done 2020. Dwt: 5,145mt. Light Disp.: 2,593mt. 1,000m2 clear deck. FO: 942.5m3. FW: 502.3m3. DW: 1,832m3. Dry Bulk: 415.8m3 in 5 tanks. Liq. Mud: 1,980.3m3. Crane: 1 - 2T SWL @ 10m fixed boom. Winch: 2 - 10T tuggers & 2 - 7.5T capstans. M/Es: 4 x Cummins QSK60-M total **9,332BHP**. 2 - ABB Azi props. 4 - 1,825kW 480vAC gensets connect to 2 - 2,000kW motors. Bowthruster 800kW. Speed about 13-14kn. Pumps: FO: 1 - 150m3/hr. BW: 1 - 150m3/hr. FW: 1 - 150m3/hr. Mud: 1 - 150m3/hr. Gensets: 1 - 350kW 480vAC 3Ph 60Hz. FiFi-1. 2 - 1,600m3/hr. pumps. 2 - 1,200m3/hr monitors. 47 in 28 cabins. 87m, **DP-2**, MMC-887 design, diesel electric PSV. Kongsberg positioning system. 2 - 1,500m3/hr compressor & 2 - 1,800m3/hr air dryer for bulk system. 8 - 480vAC, 2 - 440vAC & 2 - 220vAC reefer points. Lifesaving equipment in accordance with SOLAS flag. BNWAS fitted. For sale "as is, where is". **Southeast Asia**.

Offshore Support Market, Cont'd.

2022, the oldest AHTS available from Marcon was built in 1971.

Compared to one year ago, we have 22 fewer PSVs listed for sale. The greatest changes in the vessel size composition are five more over 240', four each fewer 150'-160' and 200'-220' and three fewer 180'-190' PSVs presently on the market. Similar to anchor handling tug supply boats, PSVs now being offered are only slightly older than those offered back in February 2017 with the average age of all available for sale increasing from 19 years of age to 20 years old now. U.S.-flagged PSVs increased from 21 years to 23 years, while foreign flagged decreased from 18 to 17 years old. As of this report, Marcon officially has available 30 supply boats built within the last ten years, with zero newbuildings listed. 44 PSVs, or 21.89%, are 25 years of age or older, with the oldest PSV listed built in 1968 - compared to one year ago when 43 PSVs (19.28%) were older than 25 years. Five years ago, 39 PSVs (29.32%) were older than 25 years, but 8 or 6.02% were newbuilds.

February 2022's number of crew boats officially on the market for sale by Marcon at 225 is down 12 from one year ago in March 2021 and up five from five years ago in February 2017. Over the last year, composition of LOA ranges has changed with the biggest shifts being seven fewer 40'-50' LOA, five fewer 30'-40' LOA and three more 50'-60' LOA crew boats offered. As of this report, 23.56% of the crew boats available are less than 10 years old, down from the 25.32% reported one year ago and from the 32.73% reported five years ago. Conversely, 31.11% today compared to 30.38% last year and 29.09% five years ago are 25 years or older. In looking at overall fleet age and then by U.S.-flagged versus foreign flagged, we can see slight changes in ages with those available today a bit older than those offered five years ago. Five years ago, the average age of all on the market through Marcon was 19 years, compared to 21 years one year ago and 20 years as of this report. Older U.S.-flagged vessels remain on the market, aging from 25 years in 2017 to 30 years in 2021 and decreasing to 28 now. Foreign flagged crew boats' age remained fairly steady at 15 years one and five years ago compared to 16 years today, but are still almost half the age of U.S. vessels.

While it is not easy to get an accurate count of all U.S.- and foreign flagged offshore support vessels scrapped over the past year, we can obtain an approximation from IHS Fairplay Sea-web, for those greater than 99GT. As of February 24, 2022, 1,016 offshore support vessels and 51 crew boats are shown as scuttled, scrapped or to be broken up. This is compared to one year ago when 923 offshore support vessels (up 93 or 10.08%) and 47 crew boats (up 4 or 8.51%) were noted as scuttled, scrapped or to be broken up. We have heard first and second hand of this same trend with under 99GT or unclassified offshore support vessels and crew boats, primarily due to owners reporting lack of work and purchase interest at above scrap levels.

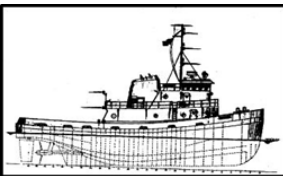
According to *IHS Fairplay Sea-Web*, as of February 24, 2022,

Details believed correct, not guaranteed. Offered subject to prior sale or charter.



Marcon's Recent Sales

Marcon has published announcements for two sales to date in 2022, though four have concluded, bringing our total sales and charters to 1,531 since our first sale in 1983. First quarter 2022 is off to a strong start, much needed after the past two years.



23 February 2022 - In a private and confidential sale between two U.S. parties, Marcon International sold a late 1970s built, 3,000BHP twin screw tug. After transiting the Panama Canal to move from one coast of the U.S. to another, the tug is at work in its new home port.

4 February 2022 - Marcon International, Inc. is pleased to report the sale of a U.S. flag 260' x 80' x 16' ocean deck barge between private U.S. interests. The barge was built in 1994 at Gulf Coast Fab in Pearlington, MS and is classed ABS +A1 Barge. She has a deadweight capacity of 4,202 long tons and light displacement of 1,098 long tons. Deck strength is rated at 2,000lb/ft2. Marcon acted as sole broker in the transaction.



29 December 2021 - Marcon is pleased to announce the sale of a 3,000BHP twin screw tug between private interests. The tug will remain based in the Caribbean. Marcon acted as the sole broker in the transaction.

30 September 2021 - In a private transaction, a late 1990s built U.S. flag Articulated Tug Barge unit was sold outside of the U.S. Marcon was the sole broker.



30 September 2021 - Private U.S. parties were involved in the sale of a late 1990s built, U.S. flagged 4,400BHP tugboat. Marcon was the sole broker involved.

2 July 2021 - Colombian owners, Intertug, sold their 1,800BHP twin screw tug "Carex" to US Virgin Island based buyers. Built in 1981 at Garber Shipyard, Berwick, LA, the tug is powered by twin Cummins KTA38. It measures 65' x 26 x 10' depth of hull. It will be reflagged to the Antigua registry.



Offshore Support Market, Concl'd.

there were 7,185 "sea-going" supply vessels over 100GRT worldwide. This is down 0.54% or 39 vessels since March 2021, reflecting the continued scrapping of older OSVs that had been laid up for the past few years. Total horsepower of this fleet is 40,470,831BHP, down 422,060BHP or 1.03% since last year. The largest national fleet of supply vessels worldwide in horsepower and count sails under U.S. registry, with the U.S. operating 777 supply vessels, or 10.81% of the world market, totaling 3,908,224HP (9.66% of global HP) with an 19.7 year average age, about the same as the worldwide fleet. Since March 2021, the U.S. fleet declined by 2.75%, or 22 OSVs, while horsepower decreased 97,787BHP or 2.44%. Compared to five years ago, February 2017, the worldwide fleet is down 4.19% or 314 vessels while horsepower is down 4.34% or 1,834,036BHP. Average horsepower remained consistent at 5,641BHP compared to 5,633BHP today. The U.S. fleet is down 169 vessels, or 17.86%, total horsepower decreased by 15.62% or 723,673BHP and average horsepower increased from 4,896BHP to 5,030BHP. The U.S. market has caught up with the worldwide trend of replacing older vessels with higher horsepower ones.

According to the **U.S. Coast Guard Merchant Vessels of the U.S.** database updated January 10, 2022, in 2021, three offshore service vessels were built or completed, the 204' PSV "Seacor Tarahumara" for Seacor Marine and for Edison Chouest the 278' PSV "C-Constructor" and the 250' PSV "Millie". In 2020 four U.S. flag OSVs were built; two in 2019 and six in 2018.

Since Marcon's first sale in 1983, we have sold or chartered 1,531 vessels and barges, including 83 PSVs, 80 AHTS totaling 383,363BHP, 110 crew / pilot boats, 34 research / survey vessels, 20 utility boats, 19 seismic vessels, nine dive vessels and one drill ship.

Marcon's full March 2022 Offshore Support Vessel Market Report will be published the latter-half of April. Our September 2021 Offshore Support Vessel Market Report can be found at this link: [Offshore Support Market Report - Sept 2021](#)

About Marcon

We specialize in the towing, marine construction and offshore petroleum industries. Although our primary focus as shipbrokers is in the sale, purchase and charter markets, we have also assisted many companies with valuations of individual vessels and fleets, as well as evaluating capital acquisitions, market rates and feasibility of trade routes.

List Your Vessel / Barge With Marcon

We are interested in receiving information on any vessels or barges, inland or ocean service, available for sale or charter. Complete this [form](#) to list a single vessel. To list more than one, please [email](#) or call us at (360) 678-8880.

Details believed correct, not guaranteed. Offered subject to prior sale or charter.